

BULLETIN BOARD

Volume 15 Issue 1

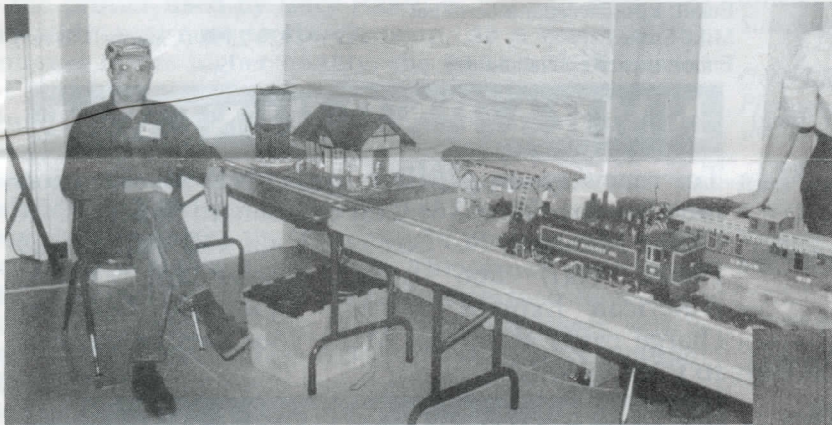
January 2001



*The Official Publication of the 7th Division, Pacific Northwest Region
National Model Railroad Association (Canada)*

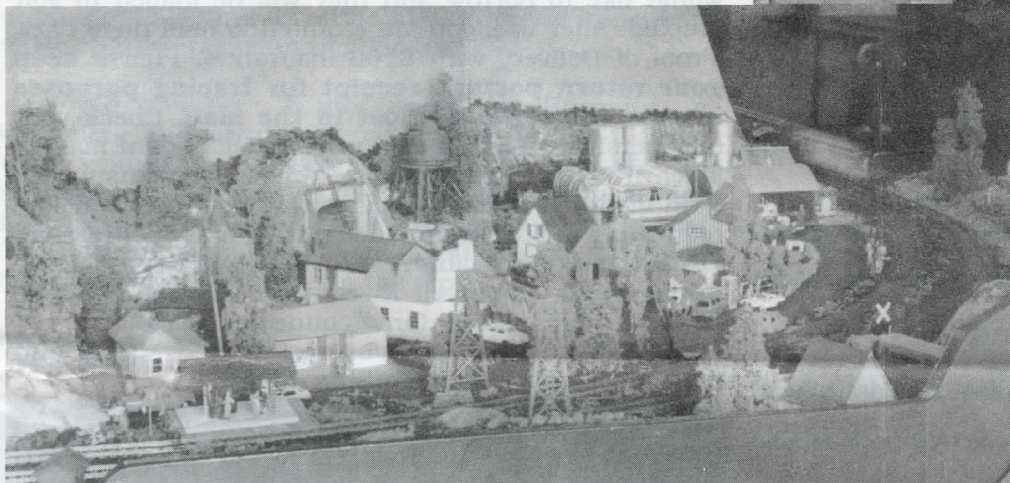
Bill Van Bergen sent these photos taken by Kristal Atkinson on January 29 and 30th, 1999. (the BB editor managed to misplace them until now!) The North Island Model Railroaders, which

Bill is a member of, spent the weekend proudly showing the public many aspects of model railroading. The club has started to hand out discarded model railroad magazines to prospective young modellers at events that they attend - a great idea that other clubs could implement.



Above - Maynard Atkinson displays some of his G-scale equipment

Below - A club static display



Above - One of the club's well-detailed corner modules



INSIDE THIS ISSUE

Welcome	Page 3
Victoria Show Report	Page 4
AP Corner	Page 5
Modellers AID	Page 5
Timetable	Page 6
WEB Sites	Page 7

SEVENTH DIVISION STANDING COMMITTEE

Executive

SUPERINTENDENT

PUBLICITY COORDINATOR

Dick Sutcliffe (604) 467 4301 (Maple Ridge)

Email: dicks@axionet.com

ASSISTANT SUPERINTENDENT

Scott Calvert (604) 939 1849 (Coquitlam)

Email: scottcalvert@home.com

SECRETARY & LOWER MAINLAND AP REPRESENTATIVE

Dave Nickerson (604) 929 8057 (North Vancouver)

TREASURER

Mike Barone (250) 367 6134 (Fruitvale)

Email: mike_barone@telus.net

DIRECTOR AT LARGE

Brian Clogg (604) 588 2194 (Surrey)

Email: bcclogg@direct.ca

Appointed Positions

7th DIVISION AP CHAIRMAN

Hugh Clarke (250) 545 3900 (Vernon)

Email: hughclarke@home.com

BULLETIN BOARD EDITOR

VANCOUVER ISLAND AP REPRESENTATIVE

JACK WORK MEMORIAL TROPHY COORDINATOR

Russ Watson (250) 478 3495 (Victoria)

Email: russwatson@home.com

MEMBERSHIP COORDINATOR

BULLETIN BOARD PRINTING & DISTRIBUTION

Gary Hazell (250) 835 8628 (Tappen)

Email: comhaven@shuswap.net

ROSS HERIOT GOLDEN SPIKE AWARD COORDINATOR

Bill Van Bergen (250) 923 5820 (Campbell River)

Email: billvan@connected.bc.ca

MEMBER AID CHAIRMAN

BULLETIN BOARD PRINTING & DISTRIBUTION

Bob Gardner, MMR (250) 832 9883 (Salmon Arm)

Email: rvongard@jetstream.net

VIDEO LIBRARY

Tony Van Bergen (250) 287 3951 (Campbell River)

Email: tony@connected.bc.ca

Lower Mainland & Fraser Valley Subdivision

Darren Brkich (604) 888 1776 (Langley)

Email: darren_brkich@hotmail.com

John Green (604) 322 8990 (Vancouver)

Email: greenjohn1@aol.com

Doug Kelleway (604) 916 9540 (Surrey)

Email: Mawsypapa2@aol.com

John Moore (604) 463 7745 (Maple Ridge)

Email: jegmo@telus.net

Richard Starchuck (604) 469 8999 (Port Moody)

Email: stark@intergate.bc.ca

John Zuk (604) 984 3232 (North Vancouver)

Email: jazuk@telus.net

Interior Subdivision

Brian Freemantle (250) 562 1036 (Prince George)

Email: b-freemantle@home.com

Ken Haun (250) 632 6334 (Kitimat)

Email: kenhaun@sno.net

Phil Strange (250) 579 9834 (Kamloops)

Email: ps@mail.ocis.net

Vancouver Island Subdivision

Ted Alexis (250) 595 4070 (Victoria)

Email: ted_alexis@hotmail.com

Don Forsyth (250) 338 4497 (Courtenay)

Email: D.Forsyth@telus.net

Patrick Lawson, MMR (250) 361 3938 (Victoria)

Email: plawson@telus.net

Ken Rutherford (250) 724 4698 (Port Alberni)

Email: kjford@cedar.alberni.net

Mike Stokes (250) 923 2398 (Campbell River)

Email: mistokes@island.net

NMRA/PNR RENEWAL

To renew your NMRA and PNR/7th Division membership, send \$61 Cdn to Leonard Soper, PNR Office Manager, PO Box 148, Vida, OR 97488-0148 Phone (541) 896 0284. MasterCard, VISA, American Express, Diner's Club and Discover charge cards accepted. Make your cheque payable to PNR/NMRA

7th Division Video Library

Please phone, write or Email to request the tapes you would like to borrow and they will be mailed to you prepaid. After use, you are required to mail them back 'Proof of Delivery with \$100 insurance'. **Please keep your return postage receipt for tracing purposes in case the tapes are lost in the mail.** Check your membership expiry date on your *Bulletin Board* mailing label. If it has expired, please renew it now using the form included with the *Bulletin Board* (or above) before requesting to borrow any tapes. The library address is: 7th Division Video Library, c/o Tony Van Bergen, 2400 Spring Road, Campbell River, BC V9W 5K8, phone (250) 287 3951 Email: tony@connected.bc.ca

A full list of tapes is published in the March and September issues of the *Bulletin Board*

QUESTIONS????

Please feel free to contact any of the above members if you have questions, comments, suggestions or concerns. The strength of any organization is with it's members! **DIRECT YOUR MODELLING QUESTIONS** to our 7th Division Member Aid Chairman, Bob Gardner, MMR, (250) 832 9883, Email: rvongard@jetstream.net

Visit the PNR WEB SITE at:

<http://www.infoharvest.ab.ca/NMRA/PNR/>

The National Model Railroad Association (Canada) is a separately incorporated section of the National Model Railroad Association Inc. headquarters in Chattanooga, TN. NMRA (Canada) is presently a non-profit organization dedicated to preserving our railroad heritage through the promotion of model railroading and by promoting and recognizing craftsmanship and service to others within the hobby.

EDITOR'S DESK

by Russ Watson



Another year as come and gone and we are now truly in the 21st century. I hope all of you and your families have a wonderful holiday season and that the new year brings you peace, happiness and good health.

You may have noticed that the last issue of the *Bulletin Board* was printed on a somewhat glossy paper. A lot of you responded about the improvement in quality that this paper provided. The paper was used due to a shortage of the normal paper at 'Canadian Photoscene' - the printer used by Gary Hazell in Salmon Arm - at no additional cost to the Division. As a result of the interest in the higher quality, the issue was discussed at the Division's Annual General Meeting at Burnaby during the 'Trains 2000' meet on November 11th. The majority of those in attendance approved the continued use of the glossy paper. The paper will cost an additional \$.30 per issue. Two of the BB issues this past year exceeded the normal \$.46 postage rate which resulted in high mailing costs. The issues were larger than normal because of multiple inserts. I have been directed to limit the size of the BB to 8 pages with a maximum of ONE single 8.5 X 11" size insert. Without the extra mailing costs incurred last year, the BB can be produced this year on the glossy paper for about the same total cost. If you anticipate needing an insert (meet registration forms, etc.) please follow the BB submission dates shown on Page 3. If I receive your submission late, and it results in an oversize issue, you will be charged the extra mailing costs.

I enjoyed another 'Trains' meet in Burnaby in November. The organizing committee and all those other volunteers worked together to provide an excellent meet - thanks to all! The first-time appearance of the 'Lego' layout was a hit with everyone and indeed it won the public popular vote layout award. The next BB we'll have a full report on the meet.

Bye for now, in the mean time, why not give someone a model train?

WELCOME!

A very warm welcome to the following new Seventh Division member:

David Birch	Pender Island
Dick Schafer	Kelowna
Craig Spink	Coquitlam

Please feel free to direct any questions, comments or concerns to any of the members, especially Bob Gardner, the 7th Division Member Aid Chairman, and those listed on Page 2. We look forward to meeting you at any of the 7th Division events.

SEVENTH DIVISION BULLETIN BOARD

The BULLETIN BOARD is published six times per year as follows:

Submission Deadline	Mailing Date	Cover Month
November 15th	December 15th	January
January 15th	February 15th	March
March 15th	April 15th	May
May 15th	June 15th	July
July 15th	August 15th	September
September 15th	October 15th	November

The BULLETIN BOARD is distributed to all Seventh Division members in good standing. Editorial opinions and those stated in articles do not necessarily reflect those of the Seventh Division Standing Committee.

CONTRIBUTIONS of Letters, Articles, Event News, Plans, Photographs and Art are encouraged and welcomed and may be sent to the BULLETIN BOARD Editor:

Russ Watson	(250) 478 3495 (Home)
4709 Barrow Road	Email: russwatson@home.com
Victoria, BC	
V9C 4C6	

Please use Email wherever possible. The Editor uses a Macintosh computer which is capable of translating a wide variety of file types including most PC files.

All **COMMUNICATIONS** directed to the Division should be forwarded to the Superintendent:

Dick Sutcliffe	(604) 467 4301 (Home and Fax)
12140 230th Street	Email: dicks@axionet.com
Maple Ridge, BC	
V2X 6R5	

MEMBERSHIP RENEWALS and **ADDRESS CHANGES** must be sent to the PNR Office Manager:

Leonard G. Soper	(541) 896 0284
PO Box 148	Email: dcnlgjms@earthlink.net
Vida, OR	
USA 97488-0148	

All other **MEMBERSHIP INQUIRIES** including **NEW MEMBERSHIPS** must be forwarded to the Membership Coordinator:

Gary Hazell	(250) 835 8628 (Home)
RR #1 S-4 C-6	Email: comhaven@shuswap.net
Tappen, BC	
VOE 2X0	

ADVERTISING in the BULLETIN BOARD is accepted at the following per issue rates:

Full Page	\$48.00	Half Page	\$24.00
Quarter Page	\$12.00	Business Card	\$6.00
Pike Ads	\$1.50		

Artwork should be supplied in the appropriate size. There may be an additional charge to complete artwork that is not camera ready. Please mail your artwork and remittance, payable to the "7th Division PNR/NMRA," to the Editor's address listed above.

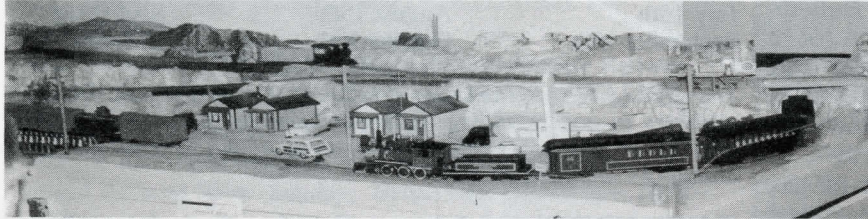
Victoria Model Railway Show 2000

by David Tomljenovich Photos by John Green except as noted

The largest one-day model railroad event on Vancouver Island, the Victoria Model Railroad Show, broke an attendance record at the Victoria Curling Rink on September 10th, 2000. The attendance of 2,025 is the largest since our move to that location in 1998.

The highlight and crowd pleaser was Jackie and Doug Hole's fabulous award winning HO scale Cisco Bridge diorama. The Show Committee was pleased that Jackie and Doug were able to commit the Cisco Bridge to our show, as this will be its final public display.

As usual there was a good representation of commercial and private sellers and

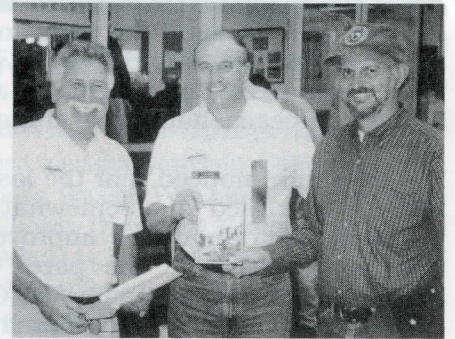


The On30 layout sponsored by Island Trains & Hobbies, Nanaimo

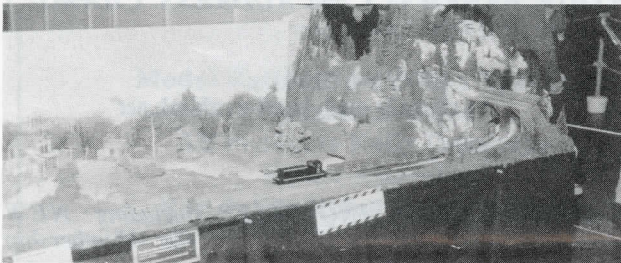
were entertained by Thomas the tank engine at David Elliot's 'Gangers British & European Layout' and Bill Stephenson's Sooke chapter of the Toy Trains Operating Society layout. They were a real hit with kids as well as with the moms and dads and grandparents.

The voting format for the Popular Vote contest was changed this year. The general public voted for best layout only. For the first time exhibitors and sellers were eligible to vote along with club members and NMRA/PNR members for the popular train, rolling stock, structure, diorama, photography, locomotive, module and club layout categories. The winners were awarded plaques that contained a photo of last year's Advertising Poster which featured last year's winning module by Jim Pike of Victoria NTRAK. The popular vote winners for 2000 are: Locomotive: Dave Quissy, On3 2-8-0 Baldwin C16; Rolling Stock: John Britt, HO scratchbuilt 40' CNR Steam Generator Car; Structure: David Tomljenovich, HO scratchbuilt 276' North Valley Pile Trestle Bridge; Train: Don Forsyth, HO CPR Canadian; Diorama: Mike Cousins, HO scratchbuilt CNR Coaling Tower; Photo: Patrick Lawson, Morning Mist at Field. BC; Module: Ed Lewis, HO Scale 'Lewistown' (Victoria To Sidney Model Railroad Club); Layout: Victoria To Sidney Model Railway Club. Next year's poster will feature Ed Lewis' "Abandoned Lewistown" HO scale module.

s o m e
surprising
great deals
such as the
new Proto
2000 0-8-0
s t e a m
locomotive.
The kids

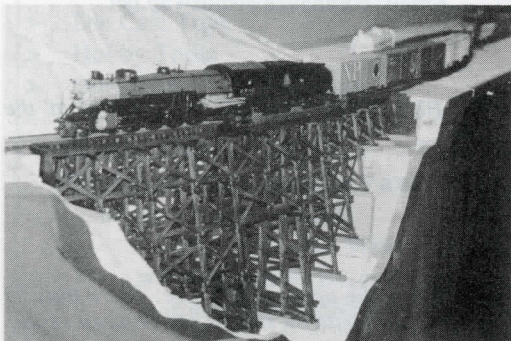


Patrick Lawson receives his Pop Vote award (above) from left to right, David Tomljenovich and Ted Alexis. Dave Quissy (far right) joins in to present John Britt with his award. Both Peter Thornton-Trump Photos



Above - The winning Pop Vote module, the HO scale "Abandoned Lewistown" by Ed Lewis is shown on the left.

On behalf of the Show Committee, I would like to thank the various club members for volunteering their time on the admission tables and the various hobby shops who contributed door prizes. Also special thanks to Peter Thornton-Trump for the popular vote plaques, and for being our special public relations and advertising whiz and to my side-kick, Ted Alexis. Remember to circle your calendar for next year for the largest one-day train show on Vancouver Island - September 9, 2001.



Above left - A beautiful O-scale Mikado traverses a trestle on the Victoria to Sidney Model Railroad Club's O scale modular layout.



Above - The Sooke Chapter of the Toy Train Operating Society always presents a layout that is packed with action to the delight of the many onlookers.

AP CORNER #6

MASTER BUILDER CARS

by Hugh Clarke

A car is anything that runs on rails, but that is NOT self propelled. To qualify for the certificate, you must build eight (8) operable scale models of railroad cars. The guidelines are summarized below:

1. There must be four different types of car among the 8 built, one of which must be a passenger car
2. Each of the 8 models must be super detailed with either scratchbuilt or commercial parts
3. Four of the 8 models must be scratch built. The term "scratchbuilt" means that the modeler has done all of the necessary layout and fabrication to produce the final dimensions, appearance and operating qualities of the model car. The following parts are excluded from scratchbuilt requirements:

- a. Wheels
- b. Couplers
- c. Light bulbs and electronics
- d. Trucks
- e. Brake fittings
- f. Marker lights and drumheads
- g. Paint and decals
- h. Basic construction shapes of wood, plastic or metal, etc.

You must earn a score of 75% (87.5 points) in AP assessment or an NMRA sponsored contest on four of the eight models.

In other words, you only need four of eight cars to be assessed, but you must describe the remaining four when submitting for the certificate. The cars may be of different scales. To learn more, talk to your local AP rep or check out the web site: <http://users.vnet.net/paulrver/welcome.html>, and, remember, when the mood strikes, BUILD!

Visit the PNR Web site at:

<http://www.infoharvest.ab.ca/NMRA/PNR/>
for information on additional events

Pacific Scale Rail



Two great locations to serve you:

**612 Carnarvon Street,
New Westminster**

2 blocks up from Columbia, just off 6th.

A short walk from the Columbia Skytrain station.

Phone 524-8825

Fax 524-6664

Out of town: 1-800-377-2860

**Town & Country Mall,
Victoria**

Centrally located

Phone (250) 475-2860

Both open 7 days a week!

We stock all scales, including BC largest selection of G trains & accessories!

Friendly service and expert advice from model railroader staffers.

Beginners always welcome!

Check out our stock of budget-friendly used trains - and yes, we pay cash for used model railway items:

the good, the bad, and the ugly!

We also offer free Sunday workshops on scenery, model building, painting, and other model rail subjects; ask us what's coming up.

Check out our internet site: www.pacificscalerrail.com

MEMBER AID

by Bob Gardner, MMR, Coordinator

Please give me a shout if you have any thorny modelling problems. We have lots of knowledgeable modellers in the Division who can lend a hand. Also, there is now an e-mail address for the NMRA Member Aid Chair:

<Memberaid@hq.nmra.org>.

In the meantime let me pass on a few tips of my own in each BB which I hope you will find helpful.

PAINTING TIPS

- Keep a pair of cheap slip-joint pliers close to your painting area for opening reluctant paint jars. I once purchased a pair of these at a garage sale for 25 cents.
- To open paint bottles with stuck lids, turn upside down and dribble a little solvent into the lid. After a few minutes the jar can usually be opened.
- To prevent stuck lids like the above, wipe off threads on jar and lid before closing. This takes under 5 seconds and saves many minutes of frustration later.
- After opening a new bottle of model paint, drop in a couple of BB's. (The air rifle kind, not this fine publication!) This helps stir the paint when shaken.
- When using modelling paint that has been sitting around for some time, stir the pigment with a small screw driver, then close and shake. Shaking only will not usually be enough.

continued on Page 8

TIMETABLE

February 17/18 - CALGARY, AB - CMRS Annual Model Railway Show, Big 4 Building. Info Glen Judd, (403) 252-4367

February 18 - SPOKANE, WA - River City Modelers Inland Northwest Train Show, Spokane Community College, Lair Student Activities Building, Mission and Green St, 10:00 - 4:00. Info: Bob & Shirley Sample, (509) 292-8332 email: sas-trains@aol.com

March 18 - PULLMAN, WA - Palouse Empire Railway Society Swap Meet, Beasley Performing Arts Coliseum, WSU Campus, 10:00 - 4:00, Info: Ken Vogel (509) 332-0505

March 25 - NANAIMO, BC - Vancouver Island Spring Model Railroad Show. Sunday, Beban Park Rec Centre, 10:00 - 4:00. Layouts, swap-n-shop, Favourite model contest. Info: Ken Rutherford (250)724-4698, Rick Lord (250)724-4205

May 18/21 - SASKATOON, SK - 6th Division Spring Meet, Info: <<http://www.geocities.com/railodessey2001/>>

June 1/2 - FIELD, BC - Third Annual Spirals Conference.

July 8 to 15 - ST. LOUIS, MO - NMRA National Convention "Gateway 2001" <<http://gatewaynmra.org>>

August 8 to 12 - SEATTLE, WA - National Garden

Railway Convention, Info: Mike Elmore (360) 659 9110

September 9 - VICTORIA, BC - Victoria Model Railway Show.

September 20 to 22 - SALT LAKE CITY, UT - 21st National Narrow Gauge Convention.

PNR CONVENTION DATES

August 7 to 12 - KELOWNA, BC - Okanagan 2001, an "NMRA Rail Odyssey," The Okanagan University College, NMRA Model Contest - All Categories, Popular Vote Model Contest, 39,000 sq ft. of space for Model Railroads, Displays & Vendors, Railfan Tours - Steam Excursion CNR 2144, Industry Tours, Layout Tours, Saturday Evening Banquet, Events for all ages. Info: John Schlosser, 220, 2000 Spall Road, Kelowna, BC V1Y-9P6, email: cwdg@direct.ca- (250)763-7427

<http://www.okanaganrailwaygroup.com/>

Below - The Canadian Forces Base Esquimalt Model Railway Club entertains the many onlookers at the Victoria Model Railway Show on September 10th, 2000.
John Green Photo

VAN HOBBIES INC.

Model Railroad & Hobby Specialists

Established 1947

All Products Fully Guaranteed

Estate Appraisals

Ron J. Small and Bruce E. Eades

We purchase for cash:

- > Model Railroad Products Mon. - Sat. 9:30 - 5:30
- > Plastic Models Closed Sun. and Wed.
- > Die Cast Toys
- > Hobby Tools
- > Other Hobby Type Products

Phone: (604) 327 3210 Fax: (604) 327 7207
675 SE Marine Drive, Vancouver, BC V5X 2T5

Try our Web site out:

www.intouch.bc.ca/pub/van.hobbies

e-mail: van.hobbies@intouch.bc.ca





WEB SITES

<http://www.modelrailroads.net> Model Railroads.Net - North American Model Railroad Directory and Search Engine that includes a multitude of railway-related links, photos and shopping.

Submitted by Bill Van Bergen

<http://www.KamloopsHeritageRailway.com> The Kamloops Heritage Railway Site (formerly the 2141 Steam Locomotive Restoration Society) contains information about their railway activities and prototype Canadian railway links.

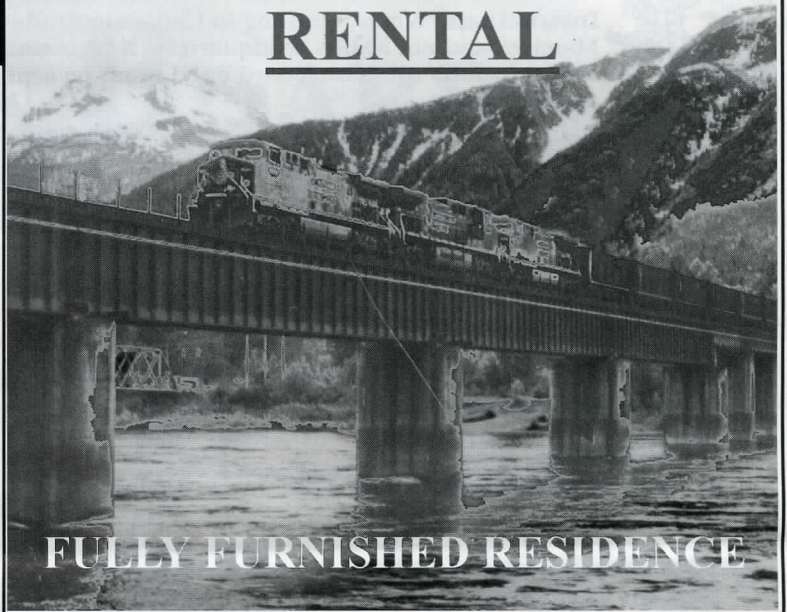
<http://railwaymuseum.ab.ca> The Alberta Railway Museum and Archives in Edmonton. Site tour, on site equipment rosters, railway links and more.

Above two submitted by Russ Watson

Is your membership expiring?

Please check the expiration date on the mailing label on the envelope that this Bulletin Board arrived in and follow the instructions on Page 2 to renew now.

REVELSTOKE RENTAL



FULLY FURNISHED RESIDENCE

2 bedroom, 950sq.ft., mfg. home on private lot in semi-rural setting on CPR Hill three blocks for downtown Revelstoke.

Package includes

appliances, bedding, linens, barbecue, cable, locale phone service

RATES

\$400/wk. or \$1200/month

Contact: John Meade Box 2009 Revelstoke, B.C. V0E 2S0

Ph: 250-837-4025 E-Mail: Rstoke837@AOL.com

Central Hobbies

Your one stop scale model train shop

Great selection of:

Tools, Books, Magazines, Videos and much more

Plastic Models and Paints

Open 6 days a week

2845 Grandview Hwy., Vancouver B.C.

Phone: 604-431-0771 FAX: 604-431-9855

Orders: Toll free: 1 888-7TRAINS

Our Web site is central-hobbies.com

Email: central_hobbies@bc.sympatico.ca



7th Division PNR-NMRA Membership Application and Renewal Form

Instructions: When remitting in Canadian funds for a **renewal** this form **must** be sent to the PNR Office Manager and not NMRA headquarters. **New memberships** should be sent to Gary Hazell. **Associate subscriptions** (Bulletin Board only) **must** be sent to Gary. **No credit card use for Bulletin Board only subscriptions.**

All Fees are in Canadian Funds:

PNR Office Manager, PO Box 148, Vida, OR 97488-0148 (541) 896-0284
Gary Hazell, RR no. 1, S-4 C-6, Tappen, B.C. V0E 2X0

Select Option	Number of Years	Total
Annual regular membership (full benefits)	_____ @ \$61.00	\$ _____
Affiliate (No NMRA Bulletin)	_____ @ \$36.00	\$ _____
NMRA Life Member: PNR annual renewal	_____ @ \$12.00	\$ _____
Family membership (of regular members)	_____ @ \$13.00	\$ _____
List Names:		
Youth membership (under 19)	_____ @ \$43.00	\$ _____
Sustaining membership (business or club)	_____ @ \$122.00	\$ _____
Five Year Regular Member	_____ @ \$290.00	\$ _____
7th div Associate subscriptions (Bulletin Board only) (Mail this form to Gary Hazell if this option is chosen with a cheque payable to 7th division PNR NMRA Credit card option is not available for subscriptions)	_____ @ \$10.00	\$ _____
Total Enclosed		_____

If paying by cheque or money order, please specify **Canadian Funds** and make payable to: **PNR-NMRA**
Current exchange rates apply to credit card payments. (BB Subscriptions not payable by credit card)
New Membership [] or **renewal** [] **NMRA#** _____ **PNR#** _____ **Scale:** _____

Name: _____ **Phone:** (____) _____

Address: _____ **City:** _____

Prov: _____ **PC:** _____ **E-mail:** _____

Date of Birth: m ____ d ____ y _____ **Fax:** (____) _____

Credit cards Accepted: MC [] VISA [] AMEX [] DC [] Discover [] **Expiry date:** _____

Card No.: _____ **Issued to** _____

form rev. 26/11/00 (Fee schedule effective 04/01/2000) **Signature** _____

Painting Tips continued from Page 5

- When closing paint jar after use (after wiping threads) shake vigorously. This gets paint around lid for a seal, but also puts the air in the jar into solution, and avoids skin forming on surface of paint. Have 1 or 2 eye-droppers (from drug store) handy for measuring quantities for blending.
- For painting not-too-fussy objects, use the cheap brushes available at "dollar stores" for a few cents each.
- Brushes for fine work should be a medium-priced sable type. Try to build up a selection of these from 000 to 3.
- Buy a package of 3" x 5" file cards and a cheap holder (recipe box?) for these. Draw a line down each one about 3/4" from the right end. Whenever you use a paint, apply a coat in this area and write the name and number on the card. You will soon have an index of colors to refer to. This is especially valuable for paint blends you have mixed yourself. Record proportions in eye-dropperfuls. The colors can then be selected or duplicated in the future.
- Floquil "Rust" (R73) is a very light "bleached-out rust as found on the desert or prairie. For more of a "Pacific Northwest" rust, a darker tone is more normal, such as a mix of: - 2 Rust, 1 Roof Brown, 1 Tuscan.
- For best visibility for painting, or any fine modelling, use a white desk pad. Sheets can be torn off when dirty. Often out-of-date desk calendars can be obtained at very low prices and used upside down.
- Another related tip-within-a-tip based on painful experience: place a sheet of wax paper under the top sheet, or a spill can soak through the whole pad!
- Keep a spare bottle of Diosol (or whatever solvent you are using) for cleaning brushes. Label it "Dirty Diosol" with masking tape.
- "Dirty Diosol" can be used for weathering, particularly for paper signs and soft wood. Try it on a scrap of the material first!
- Never use the regular "Dirty Diosol" bottle to clean brushes that have been used for "metallic" paints (silver, platinum mist, etc.). The metallic particles suspended in the solvent will transfer onto the item being weathered.
- Old style glass fuses with the fuse part removed make great "mixing bowls" for small quantities. Unfortunately these are getting scarce.