

BULLETIN BOARD

Volume 15 Issue 2

March 2001



*The Official Publication of the 7th Division, Pacific Northwest Region
National Model Railroad Association (Canada)*

TRAINS 2000 in Review

by John Green

TRAINS 2000 was the 18th annual TRAINS show organized by the Trains 2000 committee under the auspices of the 7th Division PNR NMRA. This year's meet was on a three day weekend, which allowed a longer timetable which covered four days.

On Friday evening, there were three HO scale layouts available for registrants to tour, including the layouts of Richard Starchuck - Thunder Bay and Nipigon, Scott Calvert's Canadian Pacific Railway, - Boundary Sub Division, and John Green's Coquihalla Valley Railway.

Early Saturday morning, the entire sport's hall was measured by Darren Byrkish and his crew. After the layout markers were established, the show set up. This year there were 20 operating layouts, in many scales from N scale to G, including for the first time, a popular layout constructed by members of the Vancouver Lego Club. Other

owners, members and operators of these operating layouts included: Vancouver TraiNgang, Victoria N Trak, Victoria to Sidney club (HO), Mainland Modular Railway Society layout, Toy Train Operating Society tinplate in O and S scales. Rick Ruegg and the Greater Vancouver Garden Railway Society, Euro Rails, Drumbuie, Millennium Mines Railway, Oxenhope, Top Link N scale, Sunshine Coast Model Railway Club, NorWest Club, and the Abbotsford Model Railway Society.

This year, during the later planning stages for the meet, there was a suggestion of arranging a "non-Rail quilting" tour, the nine women gathered at 10:00 am and left in two vehicles for a quilting tour and lunch trip. By all accounts, and judging by the number of happy faces a good time was enjoyed by all. There is already talk of arranging another non-rail tour as part of TRAINS 2001 meet, perhaps with a chartered bus.

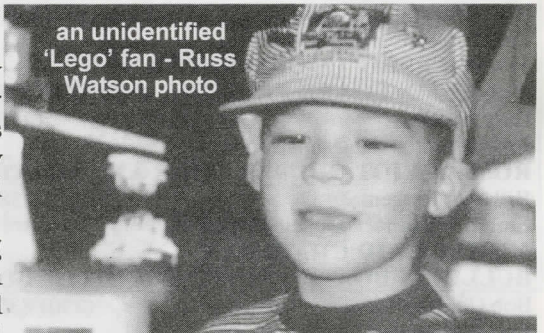
Remembrance Day was on Saturday, a small contingent of Army Cadets paraded, and two minutes silence was observed to remember the fallen of two World Wars, Korea and peacekeeping missions.

While the layouts, displays, and contests were being set up the clinics began. This year's clinics were arranged by George Massey and included: Ken Storey, Contemporary Canadian Pacific; Brian Pate, Canadian Pacific's Lightweight Baggage and Mail Cars - A Photo Study for Model Building; David Burnett, Software Programs created for the PC; Guy Brooke, Diorama/Module Design & Construction; Wendy Magnall, Painting forest backgrounds without artistic talent

The morning and afternoon passed quickly with registrants attending clinics, looking and contest voting. The contests were arranged this year by Craig Spinks and his wife Julie.

continued on Page 8

an unidentified
'Lego' fan - Russ
Watson photo



John Green Photo



Victoria to Sidney Model Railway Club corner module which won second place in the Popular Vote - Russ Watson photo

INSIDE THIS ISSUE

Welcome	Page 3
Superintendent's Report	Page 4
Member AID	Page 4
AP Corner	Page 5
NMRA News	Page 5
Timetable	Page 6
Video Library List	Insert

SEVENTH DIVISION STANDING COMMITTEE

Executive

SUPERINTENDENT

PUBLICITY COORDINATOR

Dick Sutcliffe (604) 467 4301 (Maple Ridge)

Email: dicks@axionet.com

ASSISTANT SUPERINTENDENT

Scott Calvert (604) 939 1849 (Coquitlam)

Email: scottcalvert@home.com

SECRETARY & LOWER MAINLAND AP REPRESENTATIVE

Dave Nickerson (604) 929 8057 (North Vancouver)

TREASURER

Mike Barone (250) 367 6134 (Fruitvale)

Email: mike_barone@telus.net

DIRECTOR AT LARGE

Brian Clogg (604) 588 2194 (Surrey)

Email: bcclogg@direct.ca

Appointed Positions

7th DIVISION AP CHAIRMAN

Hugh Clarke (250) 545 3900 (Vernon)

Email: hughclarke@home.com

BULLETIN BOARD EDITOR

VANCOUVER ISLAND AP REPRESENTATIVE

JACK WORK MEMORIAL TROPHY COORDINATOR

Russ Watson (250) 478 3495 (Victoria)

Email: russwatson@home.com

MEMBERSHIP COORDINATOR

BULLETIN BOARD PRINTING & DISTRIBUTION

Gary Hazell (250) 835 8628 (Tappen)

Email: comhaven@shuswap.net

ROSS HERIOT GOLDEN SPIKE AWARD COORDINATOR

Bill Van Bergen (250) 923 5820 (Campbell River)

Email: billvan@connected.bc.ca

MEMBER AID CHAIRMAN

BULLETIN BOARD PRINTING & DISTRIBUTION

Bob Gardner, MMR (250) 832 9883 (Salmon Arm)

Email: rvongard@jetstream.net

VIDEO LIBRARY

Tony Van Bergen 250) 287 3951 (Campbell River)

Email: tony@connected.bc.ca

Lower Mainland & Fraser Valley Subdivision

Darren Brkich (604) 888 1776 (Langley)

Email: darren_brkich@hotmail.com

John Green (604) 322 8990 (Vancouver)

Email: greenjohn1@aol.com

Doug Kelleway (604) 916 9540 (Surrey)

Email: Mawsypapa2@aol.com

John Moore (604) 463 7745 (Maple Ridge)

Email: jegmo@telus.net

Richard Starchuck (604) 469 8999 (Port Moody)

Email: rgstar@home.com

John Zuk (604) 984 3232 (North Vancouver)

Email: jazuk@telus.net

Interior Subdivision

Brian Freemantle (250) 562 1036 (Prince George)

Email: b-freemantle@home.com

Ken Haun (250) 632 6334 (Kitimat)

Email: kenhaun@sno.net

Phil Strange (250) 579 9834 (Kamloops)

Email: ps@mail.ocis.net

Vancouver Island Subdivision

Ted Alexis (250) 595 4070 (Victoria)

Email: ted_alexis@hotmail.com

Don Forsyth (250) 338 4497 (Courtenay)

Email: D.Forsyth@telus.net

Patrick Lawson, MMR (250) 361 3938 (Victoria)

Email: plawson@telus.net

Ken Rutherford (250) 724 4698 (Port Alberni)

Email: kj.rutherford@home.com

Mike Stokes (250) 923 2398 (Campbell River)

Email: mistokes@island.net

NMRA/PNR RENEWAL

To renew your NMRA and PNR/7th Division membership, send \$61 Cdn to Leonard Soper, PNR Office Manager, PO Box 148, Vida, OR 97488-0148 Phone (541) 896 0284. MasterCard, VISA, American Express, Diner's Club and Discover charge cards accepted. Make your cheque payable to PNR/NMRA

7th Division Video Library

Please phone, write or Email to request the tapes you would like to borrow and they will be mailed to you prepaid. After use, you are required to mail them back 'Proof of Delivery with \$100 insurance'. **Please keep your return postage receipt for tracing purposes in case the tapes are lost in the mail.** Check your membership expiry date on your *Bulletin Board* mailing label. If it has expired, please renew it now using the form included with the *Bulletin Board* (or above) before requesting to borrow tapes. The library address is:

7th Division Video Library, c/o Tony Van Bergen, 2400 Spring Road, Campbell River, BC V9W 5K8, phone (250) 287 3951 Email: tony@connected.bc.ca

A full list of tapes is published in the March and September issues of the *Bulletin Board*

QUESTIONS????

Please feel free to contact any of the above members if you have questions, comments, suggestions or concerns. The strength of any organization is with it's members! **DIRECT YOUR MODELLING QUESTIONS** to our 7th Division Member Aid Chairman, Bob Gardner, MMR, Voice: (250) 832 9883, Fax: (250) 832-0681, Email: rvongard@jetstream.net

Visit the PNR WEB SITE at:

<http://www.infoharvest.ab.ca/NMRA/PNR/>

The **National Model Railroad Association (Canada)** is a separately incorporated section of the National Model Railroad Association Inc. headquarters in Chattanooga, TN. NMRA (Canada) is presently a non-profit organization dedicated to preserving our railroad heritage through the promotion of model railroading and by promoting and recognizing craftsmanship and service to others within the hobby.

EDITOR'S DESK

by Russ Watson

I hope you had an enjoyable holiday season and I wish you health and happiness for 2001. The last two months of 2000 brought us two adorable grandsons - one in Quesnel and one in Victoria. We now have three grandchildren - that's three more potential model railroaders!

Two Internet changes: Ken Rutherford of Port Alberni has a new email address (please see Page 2) and the 'Trains' show held each November in Burnaby has a new web site: <http://www.bctrains.org>

I have added a new column to the *Bulletin Board* to report timely tidbits of NMRA information that may be of interest to 7th Division members. Some members make contact with various NMRA Officials and/or headquarters staff and discover things that may not be published elsewhere. If you receive this type of information, please pass it on to me for possible publication in the *Bulletin Board*. "NMRA News" may be found on Page 5 of this issue.

With the new year comes a host of model and prototype meets and events. I will be attending the PNR convention in Kelowna in August and I've got my eye on the National Narrow Gauge Convention in Salt Lake City in September. Closer to home I'll be attending the Nanaimo meet in March, the Victoria Show in September and 'Trains 2001' in Burnaby in November. Please check out the Timetable on Page 6 to plan your year of fun.

That's all until next time....

Trains 2000 Friday evening open house attendees

I would like to thank all those who contributed to the food bank donation box during my open house. We raised \$50.00 cash plus about two boxes of food supplies. It went to the Tri-Cities area food bank and they asked me to extend thanks to all concerned.

Yours Truly; Scott Calvert

WELCOME!

A very warm welcome to the following new Seventh Division members:

Gordon Campbell	Sorrento
Kent Cavaghan	Surrey
William Coburn	Merritt
Eileen Dimassimo	Kamloops
Gladys Gooch	Richmond
David Harris	Victoria
John Nightingale	Victoria
Charles Russ	Surrey
Kenneth Schwartz	Western Lake
Lori & Larry Sebelley	Chilliwack

Please feel free to direct any questions, comments or concerns to any of the members, especially Bob Gardner, the 7th Division Member Aid Chairman, and those listed on Page 2. We look forward to meeting you at any of the 7th Division events.

SEVENTH DIVISION BULLETIN BOARD

The BULLETIN BOARD is published six times per year as follows:

Submission Deadline	Mailing Date	Cover Month
November 15th	December 15th	January
January 15th	February 15th	March
March 15th	April 15th	May
May 15th	June 15th	July
July 15th	August 15th	September
September 15th	October 15th	November

The BULLETIN BOARD is distributed to all Seventh Division members in good standing. Editorial opinions and those stated in articles do not necessarily reflect those of the Seventh Division Standing Committee.

CONTRIBUTIONS of Letters, Articles, Event News, Plans, Photographs and Art are encouraged and welcomed and may be sent to the BULLETIN BOARD Editor:

Russ Watson (250) 478 3495 (Home)
4709 Barrow Road Email: russwatson@home.com
Victoria, BC
V9C 4C6

Please use Email wherever possible. The Editor uses a Macintosh computer which is capable of translating a wide variety of file types including most PC files.

All COMMUNICATIONS directed to the Division should be forwarded to the Superintendent:

Dick Sutcliffe (604) 467 4301 (Home and Fax)
12140 230th Street Email: dicks@axionet.com
Maple Ridge, BC
V2X 6R5

MEMBERSHIP RENEWALS and ADDRESS CHANGES must be sent to the PNR Office Manager:

Leonard G. Soper (541) 896 0284
PO Box 148 Email: dcnlgjms@earthlink.net
Vida, OR
USA 97488-0148

All other MEMBERSHIP INQUIRIES including NEW MEMBERSHIPS must be forwarded to the Membership Coordinator:

Gary Hazell (250) 835 8628 (Home)
RR #1 S-4 C-6 Email: comhaven@shuswap.net
Tappen, BC
VOE 2X0

ADVERTISING in the BULLETIN BOARD is accepted at the following per issue rates:

Full Page	\$48.00	Half Page	\$24.00
Quarter Page	\$12.00	Business Card	\$6.00
Pike Ads	\$1.50		

Artwork should be supplied in the appropriate size. There may be an additional charge to complete artwork that is not camera ready. Please mail your artwork and remittance, payable to the "7th Division PNR/NMRA," to the Editor's address listed above.

SUPERINTENDENT'S REPORT

by Dick Sutcliffe

Happy New Year to you all. Sorry there wasn't a column in the last issue, but Trains was just over when it was due, and my creative nub was numb. Hope you all had a great Christmas season.

This time of year, mid January, is one of reflection on the past and planning for the future. The thoughts I have are on the way we get deeper into this hobby, and how our focus can evolve. Since I came back into the hobby, about 25 years ago, I have gone from a freelance railway somewhere in B.C., on which I could run whatever struck my fancy; to a might-have-been private railway running from a specific place on the CPR main in the Rockies to the coast, on a Rogers' survey, on which I could run whatever struck my fancy; to now, when it is a might-have-been CPR subsidiary, in the same location, in the mid '60s with the equipment of CPR prototype. Acceptable models have progressed from 'shake-the-box' kits to resin 'craftsman' kits, (all new stock must have scale stirrups and cut levers too, others are being retrofitted when serviced). Now, if I could just get enthusiastic about scenery, it would start to look like the world I envision.

A lot of us seem to become more and more of the pack rat, sorry, 'collector' type too. What good are all those old magazines, with all the developments in the hobby? Well, I was finding it more and more difficult to find that reference - I had seen a couple of years ago, (make that 10) - in which publication? Or I'd look something up in the NMRA Periodical Index - pages of the things, each year separate, and find I didn't have it. Did you know there are at least 20 publication out there for North American model railroading? Enter the Internet and several public-minded people and organisations. Several indexes have been compiled on different publications, so that almost all are covered now, and they are all available on the Model Railroader web site! <<http://www.index.mrmag.com/>> No cost, no slant, no vested interest. Look up the subject with a variety of search parameters. Then, if you don't have the publication an email to <lib@hq.nmra.org> will get you photo copies of the material. As a member you are entitled to several free pages a year, others may have to pay. As we become focused in our passion, the resources are there and readily available.

In the last issue of the BB there was a registration form for PNR 2001, An Okanagan Railway Odyssey. Hope you are planning to take advantage of this convention in our backyard, in Canadian dollars. Note the information on the back of the form regarding the accommodation, and that you can get a jump on the reservation list by sending a deposit to the meet registrar.

The next issue of the Switch list should contain a ballot for revisions to the PNR bylaws. Be sure you read the rationale for each change and make your vote count. These will need to be followed by some changes to the 7th division Society bylaws, which are currently being reviewed by a committee.

MEMBER AID

by Bob Gardner, MMR, Coordinator

The Member Aid Program is a free service offered to NMRA members who may have questions or problems related to the hobby. Please feel free to contact me by phone, fax or e-mail and I will try to help any way I can. In the meantime, here are a few more modelling tips of my own which I hope you will find helpful.

TRACK-LAYING

Whether using prefab track sections, flex-track or laying your own rail and switches on wood ties, there are ways to make track-laying easier and more enjoyable. Here is one: The "Track Tote Box." In a cheap plastic (mine cost \$1.57) or metal tote tray, keep all the tools and materials you might need for track-work. Some of these have partitions and holes for holding various small items. These would be the basic tools:-

- NMRA track gauge
- needle-nose pliers. They almost grow into an extension of your hand. Keep these for spiking
- flush-cutting rail nippers. Keep these for rail - use someone else's for piano wire!
- spikes or track nails
- rail joiners
- small hammer and nail-set
- large (10" or so) single cut file
- small (6") single cut file

Note: when a file attains a shiny surface it is dull and should be replaced.

- straight-edge (scale rule)
- spare ties in small jar
- white or yellow glue
- an old freight truck to test track (actually a 6-wheel truck gives a better test!)

Here are some less obvious tools, but ones that I have found to be valuable in the "track tote" (especially for building switches):

- felt marker with sharp point for marking cuts
- automotive point file - this is the same size as a flange-way but will not cut downward
- broken hack-saw blade with taped end for holding - this will cut flange-ways downward but will not cut wider
- piece of 1/4" round mild steel about 3" long with a slot cut across it at one end to fit rail - use this to drive spikes down on both sides of rail
- 2 or 3 pieces of 3/16" or 1/4" birch dowel about 6" long with ends sharpened in pencil sharpener. Great for running along inside of rail to remove excess ballast
- 2 or 3 small pieces of 400-grit emery folded in half with emery outwards. Place inside switch points and throw switch. A few rubs will restore electrical continuity
- 3-point track gauge(s) or Kadee coupler gauge to hold rails in gauge while being spiked
- small magnet for picking up spilled spikes and running along track to pick up metal scraps
- "track alignment gauges" - Ribbonrail used to make these in various radii and also tangent (straight). Very handy for eliminating sharp kinks

continued on Page 7

AP CORNER #7

MASTER BUILDER STRUCTURES

by Hugh Clarke

The building of structures is easily the most popular category in the Achievement Program, followed by cars. This is likely because structures include just about anything on the layout that is man-made and doesn't fit into the cars or motive power categories. Structures includes buildings of all kinds, bridges, towers, cranes, ships and you name it.

It is important, when deciding to build a structure, to take into account its level of complexity. In order to qualify for a merit award, there is a certain level of complexity expected in a model. While it is not necessary to build overly intricate, difficult or large structures, it is best not to build overly simplistic ones. If you are unsure whether the project you are planning is sufficiently complex (or too complex), contact your area AP representative.

As a Master Builder, you must build twelve (12) structures. At least six different types of structures must be represented in the total. One structure must be a bridge or a trestle. All twelve structures must be super detailed with commercial or scratch built parts. At least six must be "scratch built" - where layout, fabrication and refinement of the model is done mostly from scratch. What is the minimum requirement for being "scratch built"? The operative word is mostly. If you cut your own wood or make your own plans, for example, you get added points. On the other hand, at the National Convention, I have seen Craftsman kits with added interiors easily qualify for high points. Note that lights and electronics, paint and decals, figures and basic shapes of wood, plastic, metal or paper, etc. are specifically excluded from scratch built requirements.

Of the 12 structures required, you must obtain 70% (of a theoretical maximum) on six models. This means six don't have to be assessed at all! They do have to be described carefully; a photo helps.

Next time, scenery will be discussed.

Remember, if the mood strikes - build!

NMRA NEWS

Switchlist - the new Editor is Gay Liesse who hopes to have the next issue published in January.

Bulletin - As you are probably aware the November, December and January issues of the Bulletin have not arrived as of mid-January. There have been problems with the Company that was doing the printing and as a result that company no longer prints the Bulletin. A new printing company has been chosen, but it has proven to be a very time consuming process to bring it

Visit the PNR Web site at:

<http://www.infoharvest.ab.ca/NMRA/PNR/>
for information on additional events

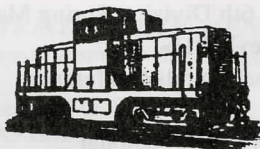
up to speed. Staff at the Bulletin have been working flat-out to redo and sort out these problems. Hopefully we should be receiving the November issue sometime soon, however the Bulletin is not expected to be fully back on track until March.

The model railroad magazine index published each year in the *Bulletin* will not be published in future years. A copy will be available by request from Headquarters. The new NMRA President, Allen Pollock, invites letters to the *Bulletin* editor. Please send letters to Blowing off Steam, P.O. Box 1, Canal Winchester, Ohio 3110, USA or email: letters@hq.nmra.org Letters won't be considered unless they are sent to one of the above addresses.

Headquarters: NMRA Director of Administration, Keeli Crewe, has resigned. Debi Barrett has been promoted to this position.

The NMRA now has state-of-the-art machines for printing and mailing, for computer bookkeeping and for computer based membership processing. Some of these items were financed by borrowing against assets. The annual savings realized from labour and out sourcing expenses will pay for them over the next nine years. The Library archival systems still require some improvements and the 25-year-old Headquarters building requires repairs. The Trustees carefully watch these borrowings since interest paid does not get used to render member services.

Pacific Scale Rail



We stock all scales, including BC largest selection of G trains & accessories!

Friendly service and expert advice from model railroader staffers.

Beginners always welcome!

Check out our stock of budget-friendly used trains - and yes, we pay cash for used model railway items:

the good, the bad, and the ugly!

We also offer free Sunday workshops on scenery, model building, painting, and other model rail subjects; ask us what's coming up.

Check out our internet site: www.pacificscalerrail.com

Two great locations to serve you:

612 Carnarvon Street,
New Westminster

2 blocks up from Columbia, just off 6th.

A short walk from the Columbia Skytrain station.

Phone 524-8825

Fax 524-6664

Out of town: 1-800-377-2860

Town & Country Mall,
Victoria

Centrally located

Phone (250) 475-2860

Both open 7 days a week!

TIMETABLE

March 10 - PORTLAND, OR - 23rd Annual Railroadiana & Model Railroad Swap Meet, sponsored by the Columbia Gorge Model RR Club, Collectors Market, 8900 N. Vancouver Ave. (Delta Park), take Exit 307 off I-5 and go south on MLK Blvd. to Vancouver Ave, 10:00 - 4:00, \$3 (age 12 to adult), children under 12 free with an adult, Info: Doug Auburg (503) 288-7246 any time (lv msg) or (360) 694-7769, email: dauburg@vintagead.com

March 18 - BURNABY, BC - 19th Annual Western Rails Railroadiana & Model Railroad Show, Cameron Rec Centre, 9523 Cameron St, Info: Paul Roy (604) 420-1292 email: proy@home.com

March 18 - PULLMAN, WA - Palouse Empire Railway Society Swap Meet, Beasley Performing Arts Coliseum, WSU Campus, 10:00 - 4:00, Info: Ken Vogel (509) 332-0505

March 25 - NANAIMO, BC - Vancouver Island Spring Model Railroad Show, Beban Park Rec Centre, Sunday 10:00 - 4:00. Layouts, swap-n-shop, Favourite model contest. Info: Ken Rutherford (250)724-4698, Rick Lord (250)724-4205

March 31 to April 1 - EUGENE, OR - Willamette Cascade Model Railroad Club Train Show & Swap Meet, Lane County Fairgrounds' Expo Hall, Sat 10-5, Sun 10-4, Info: Mike Adams (541) 461-0156 email: madams006@qwest.com

April 21 - SPOKANE, WA - 5th Division Annual Meeting, Cascade Mobile Home Community Rec Hall, Hwy 195 & 16th Ave, Info: Tom Jennings (509) 747-5989 email: jenningtjennirr@aol.com

April 28/29 - ALBANY, OR - Great Northwest Train Show & Swap Meet, Lynn County Fairgrounds, Info: Jim Walburn (541) 928-5243

May 18/21 - SASKATOON, SK - 6th Division Spring Meet, Info: <<http://www.geocities.com/railodessey2001/>>

June 1/2 - FIELD, BC - Third Annual Spirals Conference, Info: email: dave@spirals.org

July 8 to 15 - ST. LOUIS, MO - NMRA National Convention "Gateway 2001" <<http://gatewaynmra.org>>

August 8 to 12 - BELLEVUE, WA - National Garden Railway Convention, Info: Mike Elmore (360) 659 9110

September 9 - VICTORIA, BC - Victoria Model Railway Show, Info: Ted Alexis (250) 595-4070

September 15 - KAMLOOPS, BC - Railway Days, Info: Phil Strange (250) 579-9834, email: ps@mail.ocis.net

September 20 to 22 - SALT LAKE CITY, UT - 21st National Narrow Gauge Convention <<http://www.21nngc.com/>>

PNR CONVENTION DATES

August 7 to 12 - KELOWNA, BC - Okanagan 2001, an "NMRA Rail Odyssey," The Okanagan University College, NMRA Model Contest - All Categories, Popular Vote Model Contest, 39,000 sq ft. of space for Model Railroads, Displays & Vendors, Railfan Tours - Steam Excursion CNR 2144, Industry Tours, Layout Tours, Saturday Evening Banquet, Events for all ages. Info:

John Schlosser, 220, 2000 Spall Road, Kelowna, BC V1Y-9P6, email: cwdg@direct.ca- (250)763-7427

<http://www.okanaganrailwaygroup.com/>



John Zuk (left) & Gerry Landsman give out door prizes at "Trains" - Russ Watson photo

VAN HOBBIES INC.

Model Railroad & Hobby Specialists
Established 1947

All Products Fully Guaranteed
Estate Appraisals

Ron J. Small and Bruce E. Eades

We purchase for cash:

- > Model Railroad Products
- > Plastic Models
- > Die Cast Toys
- > Hobby Tools
- > Other Hobby Type Products

Phone: (604) 327 3210 Fax: (604) 327 7207
675 SE Marine Drive, Vancouver, BC V5X 2T5

Try our Web site out:
www.intouch.bc.ca/pub/van.hobbies
e-mail: van.hobbies@intouch.bc.ca

"Member Aid" continued from Page 4

"Bright-boy" track cleaner - use for removing paint or stubborn grime. Fairly abrasive
- Small felt pads and spray can of radio contact cleaner. Pads mounted on small blocks of wood are easier to handle. This cleans, improves contact and repels dust without wearing out the rail.

All this may seem like "doubling-up" on tools, but most of these are tools used for track-work only. The main exceptions are the needle-nose pliers, the files and the side-cutters. These are fairly inexpensive and worn ones can be down-graded from the "Track Tote" to the general tool box.

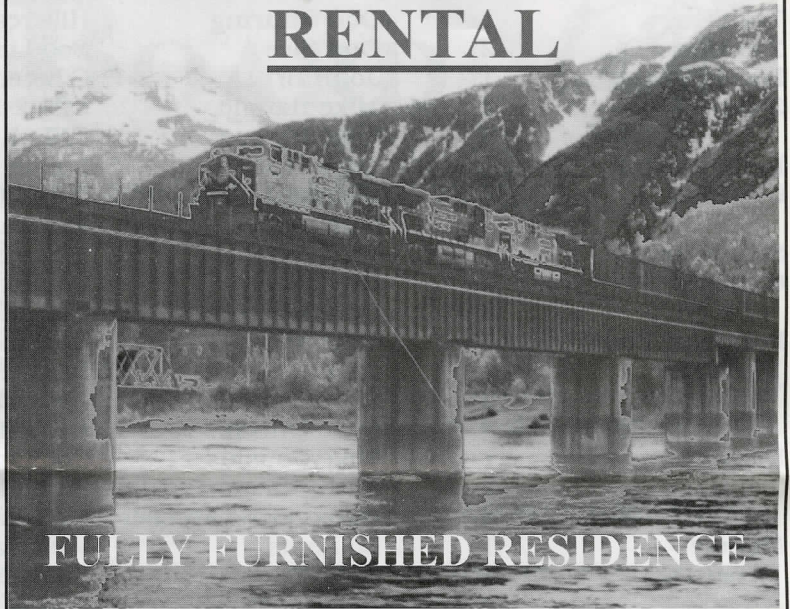
I have found that having everything at hand in the "Track Tote" when working on a track project has saved me a lot of steps, time and frustration and made track-work much more enjoyable!

Happy Track-laying!!

Is your membership expiring?

Please check the expiration date on the mailing label on the envelope that this Bulletin Board arrived in and follow the instructions on Page 2 to renew now.

REVELSTOKE RENTAL



2 bedroom, 950sq.ft., mfg. home on private lot in semi-rural setting on CPR Hill three blocks for downtown Revelstoke.

Package includes

appliances, bedding, linens, barbecue, cable, locale phone service

RATES

\$400/wk. or \$1200/month

Contact: John Meade Box 2009 Revelstoke, B.C. V0E 2S0

Ph: 250-837-4025 E-Mail: Rstoke837@AOL.com

Central Hobbies

Your one stop scale model train shop

Great selection of:

Tools, Books, Magazines, Videos and much more

Plastic Models and Paints

Open 6 days a week

2845 Grandview Hwy., Vancouver B.C.

Phone: 604-431-0771 FAX: 604-431-9855

Orders: Toll free: 1 888-7TRAINS

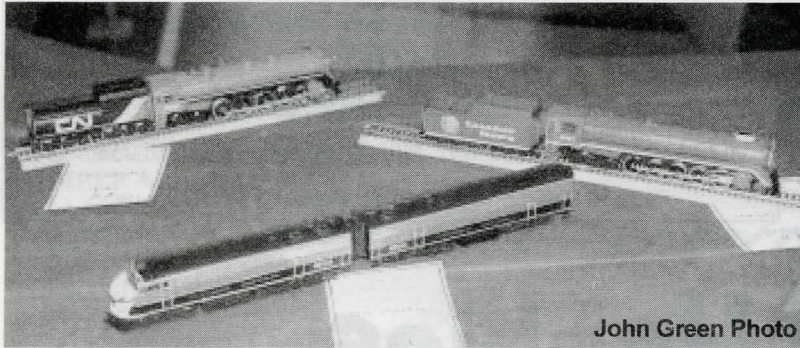
Our Web site is central-hobbies.com

Email: central_hobbies@bc.sympatico.ca

"Trains 2000 in Review" continued from Page 1

Trains 2000 Popular Vote Contest Winner List

Category	Rank	Name	Description
Train	1	Don Shuring	Hillcrest Logging Train
2 entries	2	Don Slee	Soo Line Crane Unit
Locomotive	1	John Britt	C Liner A&B
3 entries	2	Mike Barone	CPR 2-10-4 #5934
	3	Mike Barone	CNR 4-8-4 # 6233
Rolling Stock	1	John Britt	Steam Generation Unit
6 entries	2	Maynard Atkinson	C & S Caboose
	3	Richard Slingerland	Mexicano Expresio Rail Bus
Structure	1	Terry Moore	N Scale 405ft Trestle and Deck Girder Span
6 entries	2	Guy Brook	Comox Logging Ladysmith BC Sandhouse
	3	Don Slee	Cement Transfer Plant
Prototype Photo	1	Mike Nyiri	Northbound BCR Freight on Mamquam Bridge
14 entries	1	Jack D Smith	Snow Plow at Malakwa BC
	2	John Zuk	"Friendly Meet" Photo
	3	Dave Quissy	#10 Climax at Mt Ranier Scenic Railway
Diorama	1	Mike Cousins	Coaling Tower
3 entries	2	Kathy Dixon	Small town general store
	3	Hans-Joetig Mueller	Mountain top with trees and hikers
Module	1	Ed Lewis	Victoria To Sidney
17 entries	2	VSMRC	Snowshed on the Victoria to Sidney
	3	Gene Abston	Alaska Railroad on the Train Gang N Trak
Layout	1	Victoria To Sidney	Dave Quissy
20 entries	2	Victoria N Track	Ed Vernel
	3	North Island	Doug McDonald



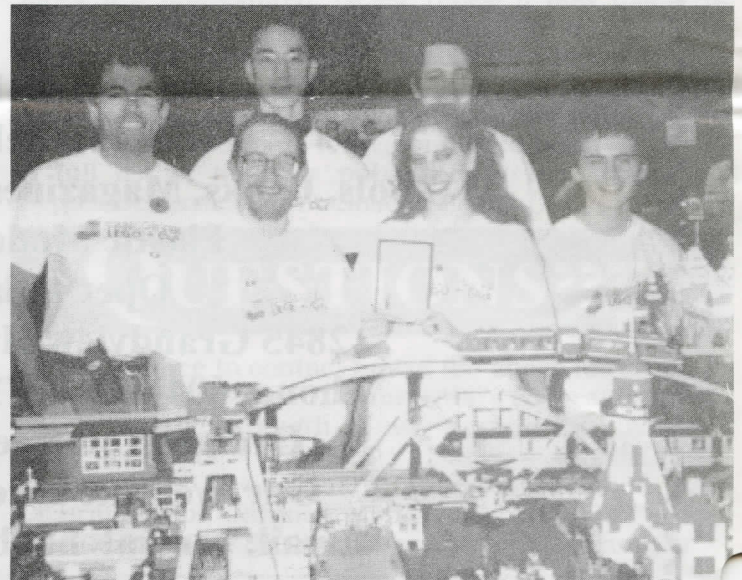
John Green Photo

There were a healthy number of entries in this year's contests, Special thanks to all who entered. Please note that there were no entries in the Model Photo Category, So get out your cameras and models for next year's event!

This year there were two entries in the 6 by 6 contest which must occupy a space no larger than 6 inches by 6 inches which is judged by the Bulletin Board Editor: A E Furmedge, Fissure Canyon and Wanda Snyder, End of the Line. This year's 6 by 6 winner was "Fissure Canyon" created and built by Al Furmedge *continued on the back of the Video Library List insert*



Transit Museum Society's #1207 &1231
John Green photo



Vancouver Lego Club members, clockwise from left: Robin Sather, Bryan Wong, Dean Husby, David Gagnon, Alexandria Husby (with Pop Vote award) and Kevin Wilson

After the clinics had been presented, there was the 7th Division PNR – NMRA annual general meeting. This year, in order to make better use of time, there had been a meal Signum arranged whereby attendees could pre-order and prepay for sandwiches, chips, and drinks from Subway. The meeting and the sandwiches ran out about just in time for people to go on the bused layout tours.

This year's escorted layout tours carried one hundred and sixteen registrants who visited five layouts in Langley and Surrey. Under the direction of volunteer conductors, Darren Byrkish, George Massey, Graham Stokes, Dave Manzer and Scott Calvert, the buses from Wellstone Tours left at 6:15 pm were all back at Cameron Recreation Centre by 11:00.

Special thanks to the layout hosts Gerry Landsman, Jack Langley, Ron Keith, Warren Rohn and Fort Langley Model Railway and their crews for putting on a great show.

Preparations for the public show began the following morning, with vendors arriving early to set up. The public show began and continued through the morning and afternoon, with lots of draw prizes. Every year part of the proceeds from Trains are donated to a local charity. This year Trains 2000 designated this charity was the CKNW Orphans Fund.

Just before the closing of the public show, the results of the Public Show vote for favourite layout was announced and the winner was - the Vancouver Lego club who brought a 16' by 6' layout incorporating several different trains, town, monorail and mind storms.

For those interested their web site can be found at: <http://www.akasa.bc.ca/vlc/>

After the show had been taken out and the floor cleared up, there was a Sunday evening banquet and award presentations, followed by a historical presentation looking back at the British Columbia Electric Railway given by Henry Ewert.

This year's Ross Herriot Gold Spike Award for outstanding service to the 7th Division was jointly awarded, "in absentia", to Ken Rutherford and Rick Lord who have organized the Nanaimo Model railway show for sixteen consecutive years.

Recognition was also given to this year's Dick Sutcliffe as winner of the PNR Regional Member of the Year Award for 2000.

On Monday morning meet events continued when forty-three delegates visited and rode on the restored heritage interurban cars operated on the Downtown Historic Railway which is operated by TRAMS (Transit Museum Society) and the City of Vancouver. Dale Laird and his crew put on a most interesting exhibit. Attendees were able to ride both restored cars #1207 and 1231. For those who missed out, and for those who would like to return for another visit, regular operations will resume on Weekends and holidays in the spring of 2001. More details are available at the TRAMS web site: <http://www.trams.bc.ca>

Following the TRAMS tour almost a dozen members visited the Grandville Island Model Train Museum (we also had a look at their Boats and Fishing exhibits).

I do hope that you had a chance to participate and enjoy the Trains 2000 meet and show.

This year's committee consisted of: Dick Sutcliffe, Chair, and Exhibit Registrar; Darren Brkich, Venue Coordinator; Brian Clogg, Registrar, and Treasurer; Bill Dixon, Secretary, name tags, and timetable; Kathy Dixon, Banquet; John Green, Layout & Prototype Tours; Pat Kelleway, Quilting Tour; Roy Kelleway, Volunteers; Gerry Landsman, Door Prizes, Publicity; George Massey, Clinics; John Moore, Publicity; Craig Spinks, Contests; Elizabeth Reymond, Banquet Master of Ceremonies.

In closing I would point out that these meets are put on by volunteers. As you can see in the list above, in order to make this year's show happen, some people who had multiple responsibilities, and with the thought that "more hands make light work" I would encourage others to come forward and share in the organizing of what is a really great show!! It is a great opportunity to share some fellowship and have some fun!

Finally thanks to all participants, from near and far, many volunteers, and Committee members who made TRAINS 2000 the success it was.

We are looking forward to seeing you at TRAINS 2001 - Remembrance Day weekend next year !!! For those on the Internet monitor our site at <http://www.bctrains.org/>