

BULLETIN BOARD

Volume 15 Issue 5 September 2001

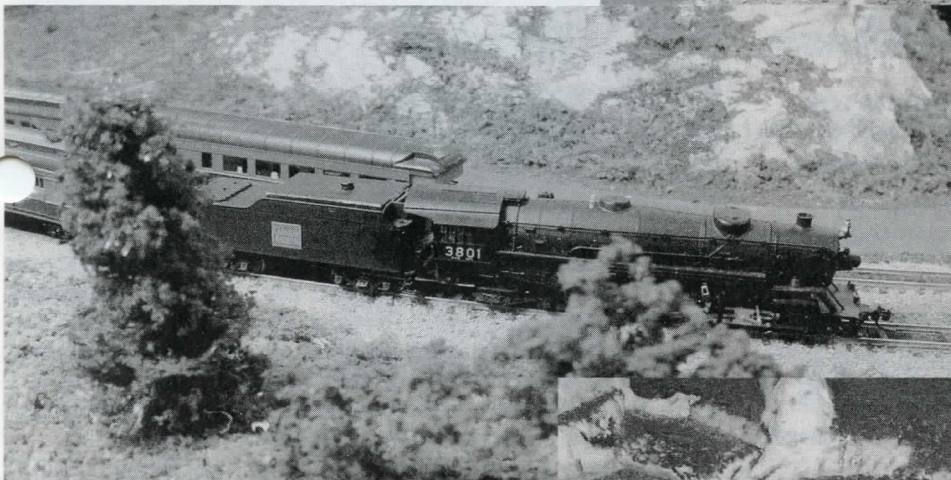
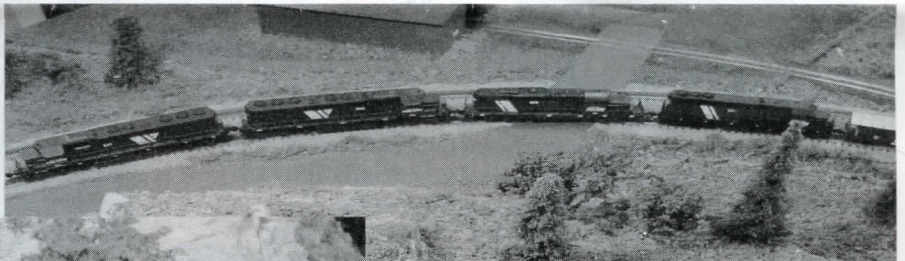


The Official Publication of the 7th Division, Pacific Northwest Region
National Model Railroad Association (Canada)

Victoria NTRAK Expands?

by Russ Watson, Photos by Steve Bamford

Can reduction from four tracks down to one track be considered an expansion? While that question is open to debate, there is no debating the fact that the Victoria NTRAK's layout is expanding. A group of members lead by Don Wigen, Ted Johnson and Terry Moore are building twelve oNeTRAK modules for connection to the club's already expansive NTRAK layout. oNeTRAK modules, as the name suggests, rely on only one track to move trains instead of the three tracks found at the front of typical NTRAK modules and have a standard size of one foot by four feet. Of course as is evident in the photos, passing tracks are allowed. The group



will make their first major public appearance with the modules at the Victoria Model Railway Show on September 9th. (see pages 6/7 for details) The modules will use the Digitrax Digital Command Control (DCC) system. While the intent is to have the oNeTRAK modules fully connected to the main NTRAK layout, the oNeTRAK layout will be an entirely separate layout at the Victoria show. DCC modifications are being made to the standard NTRAK modules to

facilitate the connection of the oNeTRAK modules to the NTRAK layout's outside main line in the future. Information about oNeTRAK may be found at <http://www.nvtrak.org/nb/onetrak.php>, NTRAK at <http://www.ntrak.org> and while you're on the Net, Steve Bamford, an aircraft modeller who supplied the photos here, suggests a visit to <http://www.aircraftresourcecenter.com/>



INSIDE THIS ISSUE

Election Results	Page 3
Past Super's Report	Page 4
TRAINS 2001 info	Page 4
7th Division WEB Site	Page 4
Member Aid	Page 5
AP Corner	Page 5
Timetable	Page 6
7th Div Video Library List	Page 8

****NMRA DUES INCREASE****

NMRA dues will increase effective Sep 1, 2001 as shown on the enclosed application form. You may want to renew your subscription by August 31st at the old rates (\$61 CDN) even if it is not due to expire, there is a 5-year option that would save a lot of money at the old rates (\$290 CDN).

SEVENTH DIVISION STANDING COMMITTEE

Executive

SUPERINTENDENT
 Scott Calvert (604) 939 1849 (Coquitlam)
 Email: scottcalvert@home.com
ASSISTANT SUPERINTENDENT
MEMBERSHIP COORDINATOR
BULLETIN BOARD PRINTING & DISTRIBUTION
 Gary Hazell (250) 835 8628 (Tappen)
 Email: comhaven@shuswap.net
SECRETARY & LOWER MAINLAND AP REPRESENTATIVE
 Dave Nickerson (604) 929 8057 (North Vancouver)
TREASURER
 Mike Barone (250) 367 6134 (Fruitvale)
 Email: mike_barone@telus.net
DIRECTOR AT LARGE
 Brian Clogg (604) 588 2194 (Surrey)
 Email: bcclogg@direct.ca

Appointed Positions

PUBLICITY COORDINATOR & PAST SUPERINTENDENT
 Dick Sutcliffe (604) 467 4301 (Maple Ridge)
 Email: dicks@axionet.com
7th DIVISION AP CHAIRMAN
 Hugh Clarke (250) 545 3900 (Vernon)
 Email: hughclarke@home.com
BULLETIN BOARD EDITOR
VANCOUVER ISLAND AP REPRESENTATIVE
JACK WORK MEMORIAL TROPHY COORDINATOR
 Russ Watson (250) 384 3495 (Victoria)
 Email: russwatson@telus.net
ROSS HERIOT GOLDEN SPIKE AWARD COORDINATOR
 Bill Van Bergen (250) 923 5820 (Campbell River)
 Email: billvan@connected.bc.ca
MEMBER AID CHAIRMAN
BULLETIN BOARD PRINTING & DISTRIBUTION
 Bob Gardner, MMR (250) 832 9883 (Salmon Arm)
 Email: rvongard@jetstream.net
VIDEO LIBRARY
 Tony Van Bergen (250) 287 3951 (Campbell River)
 Email: tony@connected.bc.ca

Lower Mainland & Fraser Valley Subdivision

Darren Brkich (604) 888 1776 (Langley)
 Email: darren_brkich@hotmail.com
 John Green (604) 322 8990 (Vancouver)
 Email: greenjohn1@aol.com
 Doug Kelleway (604) 916 9540 (Surrey)
 Email: mawspapa@hotmail.com
 John Moore (604) 463 7745 (Maple Ridge)
 Email: jegmo@telus.net
 Richard Starchuck (604) 469 8999 (Port Moody)
 Email: rgstar@home.com
 John Zuk (604) 984 3232 (North Vancouver)
 Email: jazuk@telus.net

The National Model Railroad Association (Canada) is a separately incorporated section of the National Model Railroad Association Inc. headquarters in Chattanooga, TN. NMRA (Canada) is presently a non-profit organization dedicated to preserving our railroad heritage through the promotion of model railroading and by promoting and recognizing craftsmanship and service to others within the hobby.

Interior Subdivision

Brian Freemantle (250) 562 1036 (Prince George)
 Email: b-freemantle@home.com
 Ken Haun (250) 632 6334 (Kitimat)
 Email: kenhaun@sno.net
 Phil Strange (250) 579 9834 (Kamloops)
 Email: ps@mail.ocis.net

Vancouver Island Subdivision

Ted Alexis (250) 595 4070 (Victoria)
 Email: ted_alexis@hotmail.com
 Don Forsyth (250) 338 4497 (Courtenay)
 Email: D.Forsyth@telus.net
 Patrick Lawson, MMR (250) 361 3938 (Victoria)
 Email: plawson@telus.net
 Ken Rutherford (250) 724 4698 (Port Alberni)
 Email: kj.rutherford@home.com
 Mike Stokes (250) 923 2398 (Campbell River)
 Email: mistokes@island.net

NMRA/PNR RENEWAL

To renew your NMRA and PNR/7th Division membership, send \$81 Cdn to Leonard Soper, PNR Office Manager, PO Box 148, Vida, OR 97488-0148 Phone (541) 896 0284. MasterCard, VISA, American Express, Diner's Club and Discover charge cards accepted. Make your cheque payable to PNR/NMRA

7th Division Video Library

Please phone, write or Email to request the tapes you would like to borrow and they will be mailed to you prepaid. After use, you are required to mail them back 'Proof of Delivery with \$100 insurance'. **Please keep your return postage receipt for tracing purposes in case the tapes are lost in the mail.** Check your membership expiry date on your *Bulletin Board* mailing label. If it has expired, please renew it now using the form included with the *Bulletin Board* (or above) before requesting to borrow tapes. The library address is: 7th Division Video Library, c/o Tony Van Bergen, 2400 Spring Road, Campbell River, BC V9W 5K8, phone (250) 287 3951 Email: tony@connected.bc.ca
 A full list of tapes is published in the March and September issues of the *Bulletin Board*

QUESTIONS????

Please feel free to contact any of the above members if you have questions, comments, suggestions or concerns. The strength of any organization is with its members! DIRECT YOUR MODELLING QUESTIONS to our 7th Division Member Aid Chairman, Bob Gardner, MMR, Voice: (250) 832 9883, Fax: (250) 832-0681, Email: rvongard@jetstream.net

Visit the PNR WEB SITE at:
<http://www.infoharvest.ab.ca/NMRA/PNR/>

EDITOR'S DESK

by Russ Watson

The last time I wrote this column, we were packing for our move - this time, we are still unpacking! It has been difficult after over 28 years of marriage and never living in anything but a house, to deal with everything that just won't squeeze into a two-bedroom apartment. The good news is that I have built a new hobby bench, the bad news is that I can't get near it for unpacked boxes. I'm sure by the time winter arrives, we'll be settled in and modelling will resume.

A big congratulations to our new Superintendent, Scott Calvert and Assistant Superintendent, Gary Hazell. (*election results below*) I am confident that they will receive your support and serve the 7th Division very well as they have done for many years in other capacities. I'm also sure that I can speak for all of you in thanking Dick Sutcliffe for his many years as Superintendent, well done Dick! I'm hopeful that the new brass decides to allow Dick to continue to 'show the flag' for the 7th Division as he does so well, displaying and manning the 7th Division booth at many meets.

Hope to have seen you in **Kelowna** for the PNR meet, and look forward to seeing you in **Salmon Arm** for the Corn Roast on August 24 - 26, in **Victoria** on Sep 9th and at TRAINS 2001 in **Burnaby**, Nov 9 - 12. Additional information for Victoria and Burnaby is included in this issue on Pages 4, 6 and 7, please don't miss it.

Election Results

Report from the Returning Officer

The ballots for Superintendent and Assistant Superintendent are in and have been counted and the results are as follows:

7th Division Superintendent is Scott Calvert, Coquitlam, B.C.

Assistant Superintendent is Gary Hazell, Tappen, B.C.

42 Ballots were returned with 5 incorrectly numbered.

Thank you for your participation and the ballot is now closed.

John Moore
Returning Officer.

WELCOME!

A very warm welcome to the following new Seventh Division members:

Herbert Fershau
Donald A. Hinsche
Steve M. Lingenfelt
Larry Ross
P.W.R.S. Retailing Ltd.

Kamloops
Williams Lake
Surrey
Victoria
Surrey

Please feel free to direct any questions, comments or concerns to any of the members, especially Bob Gardner, the 7th Division Member Aid Chairman, and those listed on Page 2. We look forward to meeting you at any of the 7th Division events.

SEVENTH DIVISION BULLETIN BOARD

The BULLETIN BOARD is published six times per year as follows:

Submission Deadline	Mailing Date	Cover Month
November 15th	December 15th	January
January 15th	February 15th	March
March 15th	April 15th	May
May 15th	June 15th	July
July 15th	August 15th	September
September 15th	October 15th	November

The BULLETIN BOARD is distributed to all Seventh Division members in good standing. Editorial opinions and those stated in articles do not necessarily reflect those of the Seventh Division Standing Committee.

CONTRIBUTIONS of Letters, Articles, Event News, Plans, Photographs and Art are encouraged and welcomed and may be sent to the BULLETIN BOARD Editor:

Russ Watson (250) 384 3495 (Home)
#801-450 Simcoe Street Email: russwatson@telus.net
Victoria, BC
V8V 1L4

Please use Email wherever possible. The Editor uses a Macintosh computer which is capable of translating a wide variety of file types including most PC files.

All COMMUNICATIONS directed to the Division should be forwarded to the Superintendent:

Scott Calvert (604) 939 1849
1869 Walnut Cresnet Email: scottcalvert@home.com
Coquitlam, BC
V3J 7T2

MEMBERSHIP RENEWALS and ADDRESS CHANGES must be sent to the PNR Office Manager:

Leonard G. Soper (541) 896 0284
PO Box 148 Email: dcnlgjms@earthlink.net
Vida, OR
USA 97488-0148

All other MEMBERSHIP INQUIRIES including NEW MEMBERSHIPS must be forwarded to the Membership Coordinator:

Gary Hazell (250) 835 8628
RR #1 S-4 C-6 Email: comhaven@shuswap.net
Tappen, BC
VOE 2X0

ADVERTISING in the BULLETIN BOARD is accepted at the following per issue rates:

Full Page	\$48.00	Half Page	\$24.00
Quarter Page	\$12.00	Business Card	\$6.00
Pike Ads	\$1.50		

Artwork should be supplied in the appropriate size. There may be an additional charge to complete artwork that is not camera ready. Please mail your artwork and remittance, payable to the "7th Division PNR/NMRA," to the Editor's address listed above.

'PAST' SUPERINTENDENT'S REPORT

by Dick Sutcliffe

Well, I guess this is the farewell for me as Superintendent. As I write this on July 15th, John Moore is counting the election ballots.

The past two, plus two half terms, have been an experience. It's strange how things go around. Shortly after I took office I was going through the box of records Tom Beaton had passed on, and found the minutes of a meeting when my Dad was 7th Div Super. The minutes reflected concerns about dues, organisation, volunteers, showing the hobby at the PNE, what National was doing. Sound familiar?

Then I think of all I have gained since reentering the hobby 22 years ago: lots of new friends; many activities and visits to parts of the world; new skills; new ideas and interests (history); contributing to several organisations, DARS, local museum, 7th Div, PNR, NMRA, MMRS, and now the BCSME; opportunity to help out hobbyist's families with estate evaluation.

This has got to be one of the most diverse of hobbies, and the binding is the NMRA. Each year I think the hobby is the best it has ever been, and each year it keeps getting better. We all benefit so much from the weight of our numbers pulling together, imagine what we could do if all model railroaders were members. I know the dues have gone up, but how many other organisations can give the benefits available from this one for our price of membership?

It has been a pleasure to serve you, and I look forward to a long association with all of you. See you at the next show, meet, event.

Regards, Dick

Trains 2001

by Dick Sutcliffe

Plans for the annual Fall Meet and Train Show are well underway. There are a few changes, as usual, and a lot of the favorite events and activities. The Friday evening, self-guided layout tours will be available to all who preregister. Saturday morning's early start will be layout of the hall and setting up the tables, followed by 6 clinics: Mike Barone will cover locomotive maintenance; Guy Brooke will continue with his diorama case study; Dave Burnett will have more MR electronics; John Ostler will present Land forms on Layouts in two parts; David Rees-Thomas will cover the train order operation used by the ONR. Not necessarily in this order. There may have to be two clinics running at times, to fit all these in. Of course you will also have to find time for display set-up, contest entry and judging, visiting, etc.

The non-rail tour will be a guided one to several craft/quilt outlets in the area.

The 7th div AGM will take place at 4:30pm. This will be a no-host 'dinner' meeting, with you preordering, and prepaying your meal, from Subway. (we'll have a larger format, clearer order form at the registration desk.)

The evening will be again be the guided layout tours, this year in the Coquitlam area. Some will be new, and some improved ones that you have seen before. This

usually sells out, so preregistration is suggested.

Sunday, bright & early, we complete the show set-up, the Sunday-only vendors move in, with the volunteers getting first crack at their wares, (hint), followed by the Public Show. In the evening we will have the banquet & awards, with Cosmic Catering and Black Tie Beverage Service providing the food and drink. The keynote speaker has not been selected but we have several interesting candidates - not to be missed. Fraser Valley Heritage Rwy; BC Steam society; Kamloops Heritage Rwy; BCR Passenger; Railpower Technologies Inc.

Monday's Prototype tour is still to be finalised, possibilities include: Bombardier's Skytrain equipment factory; VanTerm; Railpower Technologies Inc.

The displayer's honorarium evaluation process has been 'adjusted'. Those with static displays will get a set amount based on the size of the display. The operating displays will be evaluated as follows; Scenery & detail 1-5 pts; operation 1-5 pts; volunteer hours 1-5 pts; unique 0-3 pts; size 1-5 pts; presentation 0-max 5 pts. Details will be in the display information package, and on the web site.

The Greater Vancouver Garden Railway Club & Art Knapp's Garden Center will be setting up a large scale layout for the kids to operate during the Show. Door prizes galore, Saturday and Sunday, and at the banquet. A registration form is included in this issue of the BB, forms are also available at the bigger hobby shops, on the web site, or by contacting a member of the Trains committee:- Darren Brkich, Bill & Kathy Dixon, Gladys Gooch, John Green, Roy & Pat Kelleway, George Massey, John Moore, Bill Raikes, Craig Spinks.

Trains 2001 Invitation to Modellers

by Greg Spink

A reminder to all registered participants of the Trains 2001 show to enter one or more of the 10 modelling categories that will be judged. Ribbons will be awarded to the 1st, 2nd and 3rd most popular entry in each category as voted on by registered attendees. Also, a plaque will be awarded to the 1st place entrant of each category. The categories are Diorama, Module, Layout, Structure, Train, Rolling Stock, Locomotive, Photograph-Model, Photograph-Prototype and Novice. There is also a '6 X 6' contest judged by the Bulletin Board staff. For complete details see the web site at <http://www.bctrains.org/> or call Craig at 604-464-5288 (Coquitlam) if you don't have Internet access.

Ross Heriot Award

by Bill Van Bergen

I request that Division members submit their choice for the Ross Heriot Golden Spike Award. This is the time to honor the individual(s) in our division who has/have shown extra effort to further the hobby. Please submit your choice to me at my e-mail or my postal address. *Please see Page 2 for contact info, Ed.*

7th Division Web Site

Please check out John Zuk's efforts at: www3.bc.sympatico.ca/7division/Welcome.htm and send your suggestions/comments to him or a 7th Div Executive member. See page 2 for contact info.

MEMBER AID

by Bob Gardner, MMR, Coordinator

Please feel free to forward any modelling questions to me. (see Page 2 "Questions?" for contact info, Ed.) In the mean time, here a few thoughts of my own which I hope you will helpful.

SMALL DETAILS

Have fun by adding extra details to a structure, car, or small area of your layout. See how much detail you can realistically install in a small space.

Tip - Be Observant: -

Prototype - When railfanning note the small items in yards, along the right-of-way, around buildings, and on cars and locos. Photos are helpful here.

Model - Always keep an eye out for small items that could be used in modelling, not just in hobby shops, but department stores, dollar stores, sewing centres and craft shops.

Sources of Materials

1. Scrap box - old wheels, loco parts, tires, clock gears, plastic sprues (down-spouts, helmets, birds), ladder stock for making chairs.
2. "Notions" department - costume jewelry (chains, ear-ring clamps make great car jacks), ribbons (ornate trim), pearl ear-rings (chandeliers)
3. Dollar Stores and Toy Departments - vehicles, animals, fences, other?
4. Sewing Centres - sequins (ash trays and dishes), beads (cups), interfacing (curtains). Tools such as scissors, needle-threaders, self-healing cutting boards
5. Shop materials - solder (hoses, downspouts), sand-paper (roofing)
6. Magazines & Catalogues - posters, signs, (sand thin and wash with dirty diosol). Signs should be compatible with era. Rugs, mats, pictures for walls.
7. Paint Store - varnish & paint colour chips make good counter and table tops.
8. Scratch-building - furniture, calendars, tell-tales

As an example of detailing a small area, try a small section of your right-of-way. Items could include a rail rack with accompanying tie plates (tiny pieces of business cards painted rust) and barrels of spikes. Other items could be a tell-tale (for roof-walk era), whistle sign and flanger sign. Add a few weeds, sand or grain spill, and a little paper litter and see how these small details bring the scene to life. Happy Modeling!

AP CORNER #9

MASTER BUILDER - PROTOTYPE MODELS

by Hugh Clarke

The Achievement Program (AP) of the NMRA is designed to help us become better modelers. The Prototype Models category is the newest and likely the toughest in the AP. It was added to the AP in 1987. It requires the integration of all modeling skills from other categories in a diorama of a prototype scene. This scene must faithfully capture the essence and the details of the real thing.

A. To qualify, the model of the prototype scene must

contain six models including at least one each of four types:

1. rolling stock
2. railroad structures
3. caboose or passenger car
4. motive power

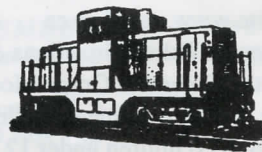
Any two must be scratch built and all must, as a group, earn a merit award of 87.5 points. This does not mean that each of the six models must win a Merit Award individually, but, rather, the scene as a whole with the six models in place must earn a merit award by the following criteria:

1. Terrain - the scenery with all its natural features
2. Structures - prototypical suitability, placement and their appearance as scenic effects - not their construction
3. Background - treatment of the wall, backdrop and/or ceiling to represent depth, distance, horizon and sky.
4. Lighting - railroad cars, signals, etc., buildings, streets and roads, etc., overall illumination - day and/or night
5. Realism/Conformity - this whole category is about (realism) conformity to the prototype

B. Prepare two sets of photograph or VHS videos, one of the model and one of the prototype scene, along with a written description that compares the model with the prototype.

C. Prepare a description for methods and materials used to create the prototypical diorama, **continued on Page 6**

Pacific Scale Rail



We stock all scales, including BC largest selection of G trains & accessories!

Friendly service and expert advice from model railroader staffers.

Beginners always welcome!

Check out our stock of budget-friendly used trains - and yes, we pay cash for used model railway items:

the good, the bad, and the ugly!

We also offer free Sunday workshops on scenery, model building, painting, and other model rail subjects; ask us what's coming up.

Check out our internet site: www.pacificscalerrail.com

Two great locations to serve you:

**612 Carnarvon Street,
New Westminster**

2 blocks up from Columbia, just off 6th.

A short walk from the Columbia Skytrain station.

Phone 524-8825

Fax 524-6664

Out of town: 1-800-377-2860

**Town & Country Mall,
Victoria**

Centrally located

Phone (250) 475-2860

Both open 7 days a week!

TIMETABLE

PLEASE NOTE THAT THE REVELSTOKE RAILWAY DAYS PLANNED FOR AUG 17-19, REVELSTOKE BC, HAVE BEEN CANCELED

August 24 to 26 - SALMON ARM, BC - Salmon Arm Model Railroader's Corn Roast & Campout, Pierre's Point Campground (10 km West of Salmon Arm), \$25 per night per family, check in Fri or Sat, trips to Notch Hill, possible photo shoot at the rock tunnels on Shuswap lake, group BBQ Sat evening, BYO steaks/booze/other meals/deck chairs and the buns and corn will be supplied, suntan lotion and swim wear will help you enjoy the beautiful water, Info Gary Hazell (250) 835-8628 Email: comhaven@shuswap.net, Doug Hole (250) 835-4653, Graham Redman (250) 832-6119

September 2 - SURREY, BC - 2nd Annual Railfest, Bear Creek Park, Hwy 99A & 88th Ave, 10-4, Info: Tony Rainbow (604) 583-0584 (eve) Email: trainbow@sfu.ca

September 9 - VICTORIA, BC - Victoria Model Railway Show, Victoria Curling Club 1952 Quadra St, 10-4, Adults \$5, Family \$11, Seniors/Youth/NMRA \$4, hourly door prizes, pop vote contest, operating model railroads, sales & displays, Info: Ted Alexis (250) 595-4070, David Tomljenovich (250) 652-1894

September 15 - KAMLOOPS, BC - Railway Days, Info: Phil Strange (250) 579-9834, email: ps@mail.ocis.net

September 20 to 22 - SALT LAKE CITY, UT - 21st National Narrow Gauge Convention <<http://www.21nngc.com/>>

September 22-23 - EDMONTON, AB - Great Edmonton Model Train Show, Mayfield Inn Trade Centre, 16615-109 Ave, Sat 10-5, Sun 10-4, Adults \$5, Seniors/under 18 \$3, Family \$10, operating layouts, dealer booths, swap tables. Info: Jim Baker (780) 430-7595 Email: jim.baker@clarica.com Website www.mmrf.ab.ca

October 20 - PORTLAND, OR - Annual Fall Railroadiana & Model Railroad Swap Meet, sponsored by the Columbia Gorge Model RR Club, Collectors Market (formerly Pay-N-Pak Antique & Collectors Market), 8900 N. Vancouver Ave, 10-4, \$3 (children under 12 free), Info: Doug Auburg, (503) 288-7246 any time (lv msg) or (360) 694-7769. Email: dauburg@vintagead.com

November 3 - CALGARY, AB - Rail Prototype Modellers Meet, Abbeydale Christian Fellowship Church, 1352 Abbeydale Drive SE, 9-5, \$10, clinics, model displays, manufacturers sales, display layout. Info: Russ Pinchbeck (403) 272-0637, Email: rpinchbeck@novatelwireless.com

November 9-11 - BURNABY, BC - 19th Annual "TRAINS" Meet and Public Show. Cameron Rec. Centre, 9523 Cameron St., Burnaby, BC. Displays, Layout Tours, Contests, Clinics, Banquet. Meet fare \$17, NMRA rebate \$4, Presenter rebate \$4, Layout Tours \$17, Banquet \$29. Meet Registrar: Kathy Dixon, 439 E. 16th St., N. Vancouver, BC, V7L 2T4 (604) 987-4237, Email: meetregistrar@bctrains.org Show Registrar Darren Brkich, 38-8844 208th St., Langley, BC, V1M 3X7 Email: trains_show_registrar@bctrains.org, Info: Dick Sutcliffe (604) 467-4301 Email: dicks@axionet.com **Public Show** Sunday November 11th, 9am to 4pm, Adults \$5, Seniors/Student/NMRA \$2, Family

\$10 Show Info: Dick Sutcliffe (604) 467-4301 Email: dicks@axionet.com Web Site: <http://www.bctrains.org>

PNR CONVENTION DATES

August 7 to 12 - KELOWNA, BC - Okanagan 2001, an "NMRA Rail Odyssey," The Okanagan University College., NMRA Model Contest - All Categories, Popular Vote Model Contest, 39,000 sq ft. of space for Model Railroads, Displays & Vendors, Railfan Tours - Steam Excursion CNR 2144, Industry Tours, Layout Tours, Saturday Evening Banquet, Events for all ages. Info: John Schlosser, 220, 2000 Spall Road, Kelowna, BC V1Y-9P6, email: cwdg@direct.ca- (250)763-7427

<http://www.okanaganrailwaygroup.com/>

2002 June 28 to July 1 - SASKATOON, SA - Great Plains Express 2002

<http://www.accesscomm.ca/nonprofits/echovalley/EV20.html>

AP Corner continued from Page 5

including terrain, structures, background and lighting. Note there is no size requirement. The model may be part of a layout or be free standing., Cars and structures may be used that have been judged previously in other categories. However the emphasis here is on the total scene. With some planning, this category may come together easily, but it will always be a challenge. And remember, when the mood strikes - build!

VAN HOBBIES INC.

Model Railroad & Hobby Specialists

Established 1947

All Products Fully Guaranteed

Estate Appraisals

Ron J. Small and Bruce E. Eades

We purchase for cash:

- > Model Railroad Products Mon. - Sat. 9:30 - 5:30
- > Plastic Models Closed Sun. and Wed.
- > Die Cast Toys
- > Hobby Tools
- > Other Hobby Type Products

Phone: (604) 327 3210 Fax: (604) 327 7207
675 SE Marine Drive, Vancouver, BC V5X 2T5

Try our Web site out:

www.intouch.bc.ca/pub/van.hobbies
e-mail: van.hobbies@intouch.bc.ca

The Island's Largest Annual
Model Railway Show

Sunday, September 9th, 2001
Victoria Curling Club • 1952 Quadra St.
10 a.m. - 4 p.m.

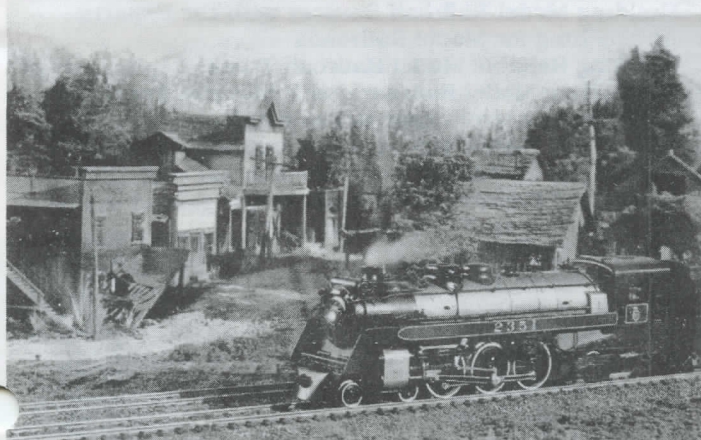
Hourly Door Prizes!
Ample Free Parking

Operating Model Railroads
Popular Vote Contest
Commercial & Individual Sales & Displays

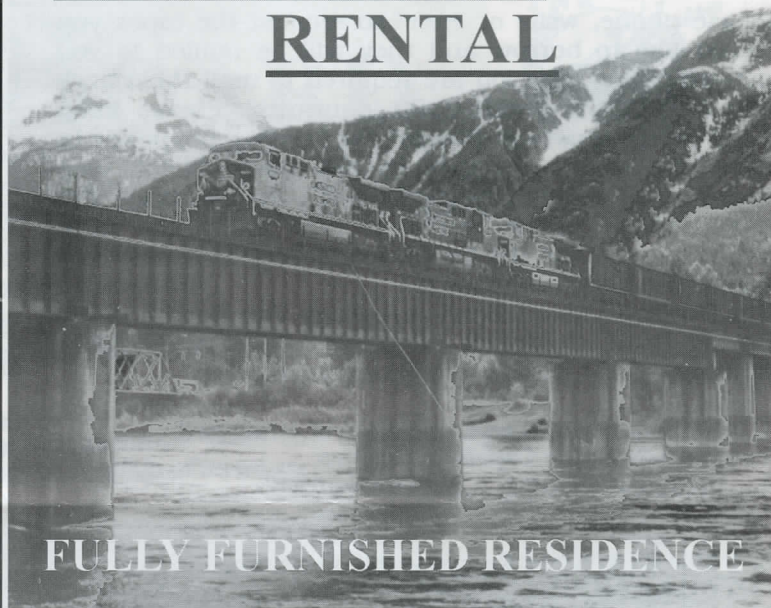
For More Information: Ted Alexis ph: (250) 595-4070
David Tomljenovich ph: (250) 652-1894

Admissions

Adults \$5 • Family \$11
Seniors/Youth \$4
NMRA/PNR Members \$4
Children 10 & under FREE
when accompanied by an adult
Supporters of Timex Colonel 1000 Fund
and the C-Fax Santa's Anonymous



**REVELSTOKE
RENTAL**



FULLY FURNISHED RESIDENCE

2 bedroom, 950sq.ft., mfg. home on private lot in semi-rural setting
on CPR Hill three blocks for downtown Revelstoke.

Package includes

appliances, bedding, linens, barbecue, cable, locale phone service

RATES

\$400/wk. or \$1200/ month

Contact: John Meade Box 2009 Revelstoke, B.C. V0E 2S0

Ph: 250-837-4025 E-Mail: Rstoke837@AOL.com

Central Hobbies

Your one stop scale model train shop

Great selection of:

Tools, Books, Magazines, Videos and much more
Plastic Models and Paints

Open 6 days a week

2845 Grandview Hwy., Vancouver B.C.

Phone: 604-431-0771 FAX: 604-431-9855

Orders: Toll free: 1 888-7TRAINS

Our Web site is central-hobbies.com

Email: central_hobbies@bc.sympatico.ca