

BULLETIN BOARD

Volume 15 Issue 6 November 2001



The Official Publication of the 7th Division, Pacific Northwest Region
National Model Railroad Association (Canada)

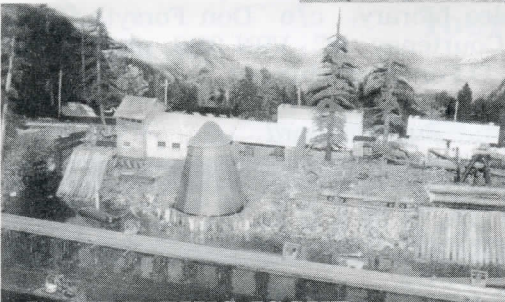
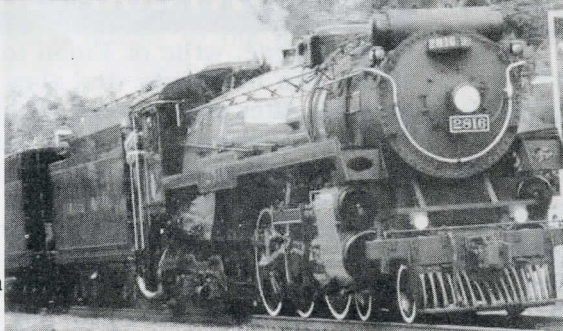
Around the Division



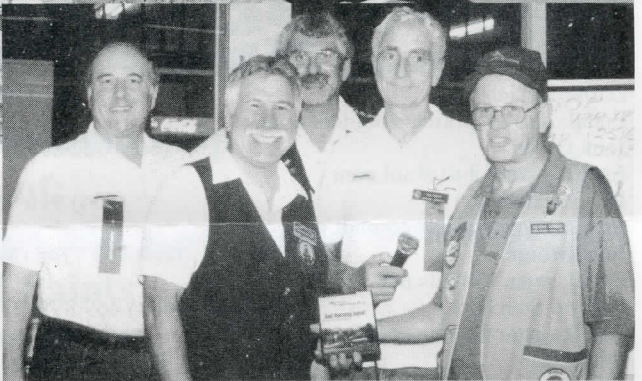
Clockwise from top left, Patrick Lawson (left) receives the Jack Work Award from Dick Sutcliffe at the Victoria Show (Russ Watson photo), L-R: Gary Hazzell, Ken Catlin, Scott Calvert and Russ Watson relax at the Kelowna meet in Bob Gardner's trailer (Bob



Gardner photo), The North Okanagan Model RR Assoc.'s new trailer built by John Kirby (Hugh Clarke photo), L-R: Ted Alexis, David Tomljenovich, Dave Quissy, & Don Forsyth present the Victoria Pop Vote award to Graham Redmond for the Salmon Arm layout (Peter

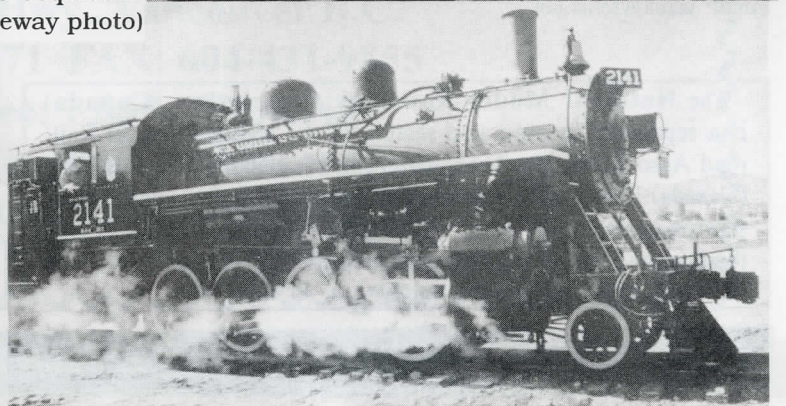


Thornton-Trump photo), ex-CNR 2141 steams up Sep 15th (Roy Kelleway photo) see Page 7 for more on 2141, David Tomljenovich's winning module at the Victoria Show (Russ Watson photo), and Centre: CPR 2816 steaming to Coquitlam Sep 19 (Roy Kelleway photo)



INSIDE THIS ISSUE

Trains 2002	Page 3
Super's Report	Page 4
New Video Librarian	Page 4
Member Aid	Page 5
AP Corner	Page 5
Timetable	Page 6
Trains 2001 Update	Page 6
WEB Sites	Page 7
ex CNR 2141	Page 7
Victoria Show Report	Page 8



SEVENTH DIVISION STANDING COMMITTEE

Executive

SUPERINTENDENT

Scott Calvert (604) 939 1849 (Coquitlam)

Email: scottcalvert@home.com

ASSISTANT SUPERINTENDENT

MEMBERSHIP COORDINATOR

BULLETIN BOARD PRINTING & DISTRIBUTION

Gary Hazell (250) 835 8628 (Tappen)

Email: comhaven@shuswap.net

SECRETARY & LOWER MAINLAND AP REPRESENTATIVE

Dave Nickerson (604) 929 8057 (North Vancouver)

TREASURER

Mike Barone (250) 367 6134 (Fruitvale)

Email: mike_barone@telus.net

DIRECTOR AT LARGE

Brian Clogg (604) 588 2194 (Surrey)

Email: bcclogg@direct.ca

Interior Subdivision

Brian Freemantle (250) 562 1036 (Prince George)

Email: b-freemantle@home.com

Ken Haun (250) 632 6334 (Kitimat)

Email: kenhaun@sno.net

Phil Strange (250) 579 9834 (Kamloops)

Email: ps@mail.ocis.net

Vancouver Island Subdivision

Ted Alexis (250) 595 4070 (Victoria)

Email: ted_alexis@hotmail.com

Patrick Lawson, MMR (250) 361 3938 (Victoria)

Email: plawson@telus.net

Ken Rutherford (250) 724 4698 (Port Alberni)

Email: kj.rutherford@home.com

Mike Stokes (250) 923 2398 (Campbell River)

Email: mistokes@island.net

Appointed Positions

PUBLICITY COORDINATOR & PAST SUPERINTENDENT

Dick Sutcliffe (604) 467 4301 (Maple Ridge)

Email: dicks@axionet.com

7th DIVISION AP CHAIRMAN

Hugh Clarke (250) 545 3900 (Vernon)

Email: hughclarke@home.com

BULLETIN BOARD EDITOR

VANCOUVER ISLAND AP REPRESENTATIVE

JACK WORK MEMORIAL TROPHY COORDINATOR

Russ Watson (250) 384 3495 (Victoria)

Email: russwatson@telus.net

ROSS HERIOT GOLDEN SPIKE AWARD COORDINATOR

Bill Van Bergen (250) 923 5820 (Campbell River)

Email: billvan@connected.bc.ca

MEMBER AID CHAIRMAN

BULLETIN BOARD PRINTING & DISTRIBUTION

Bob Gardner, MMR (250) 832 9883 (Salmon Arm)

Email: rvongard@jetstream.net

VIDEO LIBRARY

Don Forsyth (250) 338 4497 (Courtenay)

Email: D.Forsyth@telus.net

Lower Mainland & Fraser Valley Subdivision

Darren Brkich (604) 888 1776 (Langley)

Email: darren_brkich@hotmail.com

John Green (604) 322 8990 (Vancouver)

Email: greenjohn1@aol.com

Doug Kelleway (604) 916 9540 (Surrey)

Email: mawsypapa@hotmail.com

John Moore (604) 463 7745 (Maple Ridge)

Email: jegmo@telus.net

Richard Starchuck (604) 469 8999 (Port Moody)

Email: rgstar@home.com

John Zuk (604) 984 3232 (North Vancouver)

Email: jazuk@telus.net

NMRA/PNR RENEWAL

To renew your NMRA and PNR/7th Division membership, send \$81 Cdn to Leonard Soper, PNR Office Manager, PO Box 148, Vida, OR 97488-0148 Phone (541) 896 0284. MasterCard, VISA, American Express, Diner's Club and Discover charge cards accepted. Make your cheque payable to PNR/NMRA

7th Division Video Library

Please phone, write or Email to request the tapes you would like to borrow and they will be mailed to you prepaid. After use, you are required to mail them back 'Proof of Delivery with \$100 insurance'. **Please keep your return postage receipt for tracing purposes in case the tapes are lost in the mail.** Check your membership expiry date on your *Bulletin Board* mailing label. If it has expired, please renew it now using the form included with the *Bulletin Board* (or above) before requesting to borrow tapes. The library address is: 7th Division Video Library, c/o Don Forsyth, 2022 Cedar Crescent, Courtenay, BC V9N 3B6, phone (250) 338 4497 Email: D.Forsyth@telus.net
A full list of tapes is published in the March and September issues of the *Bulletin Board*

QUESTIONS????

Please feel free to contact any of the above members if you have questions, comments, suggestions or concerns. The strength of any organization is with its members! **DIRECT YOUR MODELLING QUESTIONS** to our 7th Division Member Aid Chairman, Bob Gardner, MMR, Voice: (250) 832 9883, Fax: (250) 832-0681, Email: rvongard@jetstream.net

Visit the PNR WEB SITE at:

<http://www.infoharvest.ab.ca/NMRA/PNR/>

The **National Model Railroad Association (Canada)** is a separately incorporated section of the National Model Railroad Association Inc. headquarters in Chattanooga, TN. NMRA (Canada) is presently a non-profit organization dedicated to preserving our railroad heritage through the promotion of model railroading and by promoting and recognizing craftsmanship and service to others within the hobby.

EDITOR'S DESK

by Russ Watson

Events in September greatly lessened the significance of model railroading. The unbelievable attack on our neighbours in the U.S. has numbed us all. We have heard leaders and prominent people from around the world comment about the attack. There is nothing more that I can say other than to pass our best wishes on to everyone affected by the tragedy. Much closer to home, I'm saddened to report that Dave Nickerson, our secretary from North Vancouver, suffered a severe heart attack in mid September. As of this writing, Dave remains in intensive care.

Any yet one more event to report: Doug and Jackie Hole and Gary Hazell and Jim Goldthorp were involved in a car accident as they returned home to the Salmon Arm area following the Victoria Model Railway Show. They were all travelling in the Hole's van which was totalled in a near head-on collision. Doug and Jackie were severely shaken up but released from hospital the same day. Gary and Jim received operations for internal injuries and remained in hospital for a couple of weeks.

On behalf of all of the 7th Division members, I send our thoughts and sincere wishes for a quick and complete recovery to you all.

September was also the month that marked the return to life of two steam locomotives in B.C. - the ex-CNR 2141 in Kamloops and the ex-CPR 2816 in North Vancouver. The 2141 is waiting for a track connection to the CPR main line, while 2816 is now in Calgary. I'm hoping to publish photos and commentary on these events in future issues.

It was a busy summer in BC - I attended the PNR convention Kelowna, the Salmon Arm Corn Roast and the Victoria Snow. I thoroughly enjoyed all of the activities - a big thank you to all of the organizers!

Next up is the always fantastic "Trains" meet in Burnaby followed by a great Spring Meet in Vernon in March and the always popular Nanaimo meet in April. Please refer to the Trains 2001 Update on Page 6 for last-minute updates and the Vernon registration form that Hugh Clarke promised he would have in this issue. All of these events and more are included in the Timetable on Page 6

I hope to see many of you in Burnaby, until then please take care.

Trains 2002

by Dick Sutcliffe

And some advance information!

It is a little early, but it's time to think about **Trains 2002!**

The Trains committee has been approached by the CPR & CNR SIGs to have a joint convention, coinciding with Trains 2002. We have had a couple of meetings, and tentative plans include two guided layout tours, double sets of clinics on the Saturday, clinics on Sunday, prototype tours on the Friday and Monday, perhaps an RPM contest, as well as the usual Train Show and banquet. We will be looking for hotel discounts if there is enough interest. The CPR SIG contacts are Scott Calvert, John Green & myself, the CNR contacts are Russ Watson, Al Lill & Mike Arone, or you may contact a member of the Trains committee. You do not have to be a SIG member to take part. Let us know what your interests are.

SEVENTH DIVISION BULLETIN BOARD

The BULLETIN BOARD is published six times per year as follows:

Submission Deadline	Mailing Date	Cover Month
November 15th	December 15th	January
January 15th	February 15th	March
March 15th	April 15th	May
May 15th	June 15th	July
July 15th	August 15th	September
September 15th	October 15th	November

The BULLETIN BOARD is distributed to all Seventh Division members in good standing. Editorial opinions and those stated in articles do not necessarily reflect those of the Seventh Division Standing Committee.

CONTRIBUTIONS of Letters, Articles, Event News, Plans, Photographs and Art are encouraged and welcomed and may be sent to the BULLETIN BOARD Editor:

Russ Watson (250) 384 3495 (Home)
#801-450 Simcoe Street Email: russwatson@telus.net
Victoria, BC
V8V 1L4

Please use Email wherever possible. The Editor uses a Macintosh computer which is capable of translating a wide variety of file types including most PC files.

All **COMMUNICATIONS** directed to the Division should be forwarded to the Superintendent:

Scott Calvert (604) 939 1849
1869 Walnut Crescent Email: scottcalvert@home.com
Coquitlam, BC
V3J 7T2

MEMBERSHIP RENEWALS and **ADDRESS CHANGES** must be sent to the PNR Office Manager:

Leonard G. Soper (541) 896 0284
PO Box 148 Email: dcnlgjms@earthlink.net
Vida, OR
USA 97488-0148

All other **MEMBERSHIP INQUIRIES** including **NEW MEMBERSHIPS** must be forwarded to the Membership Coordinator:

Gary Hazell (250) 835 8628
RR #1 S-4 C-6 Email: comhaven@shuswap.net
Tappen, BC
V0E 2X0

ADVERTISING in the BULLETIN BOARD is accepted at the following per issue rates:

Full Page	\$48.00	Half Page	\$24.00
Quarter Page	\$12.00	Business Card	\$6.00
Pike Ads	\$1.50		

Artwork should be supplied in the appropriate size. There may be an additional charge to complete artwork that is not camera ready. Please mail your artwork and remittance, payable to the "7th Division PNR/NMRA," to the Editor's address listed above.

SUPERINTENDENT'S REPORT

by Scott Calvert

Before I get to my report, I wish to extend the heartfelt wishes and prayers of all Divisional members to our friends and colleagues in the United States in light of the tragedy and horror of the terrorist attacks experienced on September 11th. I'm sure all people share my feelings of sheer numbness and sadness while seeing the terrible reports as they unfolded before our eyes.

On another serious note, I send the best wishes of all 7D Members to the members of the Salmon Arm Club who were involved in a serious motor vehicle accident while returning from the Victoria railroad show on September 10th. At the time of writing this report, Gary Hazell (7D VP) and Jimmy Goldthorpe were recovering from surgery in the Kamloops hospital.

This is my first report as your new Divisional President (Superintendent) and my first order of business is to extend the sincere thanks of all 7D members to Dick Sutcliffe for the tremendous effort he put into the Super's duties during the many years he served us. He will indeed be a difficult act to follow - I will give it my very best. Thank you to all those members who took the time to vote, and I appreciate all the good wishes I have received since taking office. One thing I have noticed over the many years I have been involved in the 7D is how strong and active our Division is. We have a tremendous number of activities within our boundaries, an excellent newsletter, a very involved group of members, and many tangible benefits to being a member.

I attended the PNR business meeting in Kelowna in August with Dick Sutcliffe and Gary Hazell, and had the opportunity to meet many of the PNR executive and gain some understanding of the issues which face the PNR and NMRA. Generally, the PNR is in good financial shape and is a very active Region within the NMRA. Significant items to report are; Chuck Kuranko accepted the newly created position of Education Chair, proposal from Eugene Oregon to host the 2003 Regional convention was accepted, agreement to partially cover the loss for the Boise PNR convention, Phil Maggs is finalizing the Regional convention handbook, Dick Sutcliffe has assumed the role of Member of the Year coordinator from Roger Ferris. Of course, the most significant item of discussion was the recent NMRA dues increase. All committee members struggled with the rationalization of this significant one time increase and the probable negative impact on our membership numbers. I am told the NMRA projected a 10% loss of members as a result of the increase- I fear it may be higher. I urge you to truly consider the benefits that NMRA membership has to offer before failing to renew your membership. Watch your PNR Switchlist for more info on the dues increase. I find it interesting that one of the most significant benefits has largely gone unacknowledged - that being the development of the DCC standards, which the manufacturers subscribe to and countless members

enjoy. Without question to me personally the most significant benefit is the friendship and camaraderie I have experienced by being a member.

The Regional meet held in Kelowna in August was very enjoyable and well worth attending. John, Brad and their committee organized a great meet with many activities to choose from. There were about 175 registered delegates, many from the 7D. I am sure the convention committee will be providing a separate report so I will not dwell on the details. Next years Regional will be held in Regina Saskatchewan. It is some distance from the 7D, however, from what I've seen of their plans it will be worth the trip. The 2003 convention will be in Eugene, Oregon, and there will be no convention in 2004 due to the Seattle National. We will be having the 7D Annual General Meeting on November 10th at 4:30 pm in Cameron Rec centre in Burnaby in conjunction with the Trains convention. You are all encouraged to attend, and if there are any items you want on the Agenda just e-mail them to me. By the way, if you haven't already done so, check out the new 7D web site which John Zuk has created (see below Ed.). He has done a great job - it is one of the best ones I've seen.

I had the pleasure of attending the Victoria Train show on September 9th with many other "mainlanders" and had a great time. My compliments to the committee for a job well done. We also had the opportunity of viewing some home layouts on the Saturday evening and you could also join the no-host supper that evening as well. I hope you all had a wonderful summer - I'm looking forward to seeing many of you at Trains 2001 in November. By the way, watch for further news regarding Trains 2002 which is currently being planned to be expanded into a CP/CN Sig meet in combination with the regular convention.

NEW VIDEO LIBRARIAN

Don Forsyth is the new 7th Division video librarian. Please refer to "7th Division Library" on Page 2 for Don's contact information.

The complete video library will be on location at the "Trains 2001" meet in Burnaby, November 10 & 11, for those wishing to borrow/return tapes. The complete list of tapes is published in the Bulletin Board in March and September issues.

A great big THANK YOU to Tony Van Bergen for his many years of service to the 7th Division members as the video librarian!

7th Division Web Site

Please check out John Zuk's efforts at: www3.bc.sympatico.ca/7division/Welcome.htm and send your suggestions/comments to him or a 7th Div Executive member. See page 2 for contact info.

MEMBER AID

by Bob Gardner, MMR, Coordinator

Please keep those modeling questions coming. If I can't answer them personally there are lots of experts available whom I can contact on your behalf. In the meantime here are a few of my ideas which I hope will be helpful. (see page 2 for Bob's contact info Ed.)

PART 1

LAYOUT LIGHTING

The lighting on most of our layouts is far less intense than that of outdoor lighting. Brighter lighting of the layout therefore enhances realism as well as improving the visibility of our models. Lighting can also be used to create special scenic effects

Room Lighting

- Aisles should be dimly lighted, possibly with a drop ceiling with no lights.
- The layout should be intensely lighted to give a stage-type lighting for dramatic effect and to de-emphasize non-scale surroundings.

Fluorescent fixtures

Advantages

- even lighting, soft shadows
- good work lighting
- low power consumption and low heat
- "kitchen/bath" type give warm color but the new "full-spectrum" 5,000 K type of tube gives brighter light and natural color. This type of tube also makes photography much easier as no filters are required.

Disadvantages

- cannot be dimmed
- lack strong shadows

Incandescent lights

Advantages

- can use 75-watt or 125-watt reflector floods for strong shadows.
- 100 watt light bulbs or white Xmas tree strings softer shadows. (All shadows should fall in the same direction)
- flexible sockets can "aim" lights
- can be dimmed for sunset and sunrise effects
- can use coloured bulbs: orange and yellow for sunrise/sunset effect blue for moonlight or snow scenes

Disadvantages

- high power consumption and high heat
- might require more than one dimmer (The common 500-watt dimmer can handle 4 - 125-watt or 6 - 75-watt reflector floods or 5 - 100-watt bulbs. 1000 watt dimmers are also available)

PART 2 will be published in the January 2002 issue Ed.

AP CORNER #10

MODEL RAILROAD ENGINEER - CIVIL

by Hugh Clarke

In the broad area of construction and operation, there are three certificates in the Achievement Program: Civil Engineering, Electrical Engineering and Chief Dispatcher. Today, let's look at Model Railroad Engineer - Civil. Many layout builders consider these requirements when plan-

ning their layouts since the requirements apply to almost any layout.

A. Prepare an original scale drawing of a model railroad track plan showing size, scale, track elevations, curve radii and turnout sizes. This drawing must include:

1. Adequate terminal facilities for freight or/and passenger cars
2. Adequate terminal facilities for motive power service and storage
3. at least one mainline passing siding
4. four switching locations, in addition to yards, wyes, interchanges and reversing loops
5. ability to turn motive power
6. simultaneous operation of at least two mainline trains in either direction

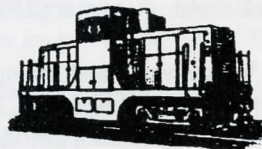
B. Construct and demonstrate a section of the track plan described in A, above, containing 50 linear feet of track in HO (or other scales proportional to HO) with appropriate ballast, drainage and roadbed profile. This need not be all mainline, but can contain spurs, yards, etc. You need to show you know how to model track using prototype practice. This track work must show six of 18 different track features, such as a siding, spur, crossover, reversing loop, wye, turntable, ladder (in yard), etc.

C. For AP merit judging, construct (scratch build) three of fourteen types of track such as turnout, crossover, crossing, gauntlet track, etc. These must qualify for merit award and need not be part of B.

D. Fill out some paper work.

That's it. Really quite reasonable if you plan from the beginning. And remember - when the mood strikes - BUILD.

Pacific Scale Rail



We stock all scales, including BC largest selection of G trains & accessories!

Friendly service and expert advice from model railroader staffers.

Beginners always welcome!

Check out our stock of budget-friendly used trains - and yes, we pay cash for used model railway items: the good, the bad, and the ugly!

We also offer free Sunday workshops on scenery, model building, painting, and other model rail subjects; ask us what's coming up.

Check out our internet site: www.pacificscalerrail.com

Two great locations to serve you:

**612 Carnarvon Street,
New Westminster**

2 blocks up from Columbia, just off 6th.

A short walk from the Columbia Skytrain station.

Phone 524-8825

Fax 524-6664

Out of town: 1-800-377-2860

**Town & Country Mall,
Victoria**

Centrally located

Phone (250) 475-2860

Both open 7 days a week!

TIMETABLE

November 3 - CALGARY, AB - Rail Prototype Modellers Meet, Abbeydale Christian Fellowship Church, 1352 Abbeydale Drive SE, 9-5, \$10, clinics, model displays, manufacturers sales, display layout. Info: Russ Pinchbeck (403) 272-0637, Email: rpinchbeck@novatelwireless.com

November 10 - KENT, WA - Boeing Employees Model RR Club Swap Meet. Kent Commons, 525 4th Ave N, Adults \$5, Young Adults/Children under 15 free, Info: Ed Sherry (206) 878-5968, Email: swapmeet@bemrrc.com or edward.r.sherry@boeing.com

November 9-11 - BURNABY, BC - 19th Annual "TRAINS" Meet and Public Show. Cameron Rec. Centre, 9523 Cameron St., Burnaby, BC. Displays, Layout Tours, Contests, Clinics, Banquet. Meet fare \$17, NMRA rebate \$4, Presenter rebate \$4, Layout Tours \$17, Banquet \$29. Meet Registrar: Kathy Dixon, 439 E. 16th St., N. Vancouver, BC, V7L 2T4 (604) 987-4237, Email:

meetregistrar@bctrains.org Show Registrar Darren Brkich, 38-8844 208th St., Langley, BC, V1M 3X7 Email:

trains_show_registrar@bctrains.org, Info: Dick Sutcliffe (604) 467-4301 Email: dicks@axionet.com **Public Show** Sunday November 11th, 9am to 4pm, Adults \$5, Seniors/Student/NMRA \$2, Family \$10 Show Info: Dick Sutcliffe (604) 467-4301 Email:

dicks@axionet.com Web Site: <http://www.bctrains.org>

November 23-25 - SEATTLE, WA - 28th Annual Pacific Science Center Train Show. Info: Frank Dekker, (425) 746-6964. Email: rekkedrails@juno.com

February 16-17, 2002 - CALGARY, AB - SUPERTRAIN 2002, Big 4 Building, Stampede Park. Info: Barry Conn Email: supertrain@calgarymodelrailway.org

March 29-30 - VERNON, BC - 7th Division Spring Meet, Vernon Lodge Hotel (250) 545-3385, Info: Jack Smith, Registrar (250) 542-6520

April 21, 2002 - NANAIMO, BC - Vancouver Island Spring Model Railroad Show, Beban Park Rec Center (2300 Bowen Rd), 10-4, Adults \$4, Family \$8, NMRA \$3, Layouts, Swap-n-shop, Model contests, Sales tables \$20.00. Info: Ken Rutherford (250) 724-4698 Email: kj.rutherford@home.com or Rick Lord (250) 724-4205

PNR CONVENTION DATES

2002 June 28 to July 1 - REGINA, SA - Great Plains Express 2002

<http://www.accesscomm.ca/nonprofits/echovalley/EV20.html>

2003 Eugene, OR

Trains 2001 Update

by Dick Sutcliffe

This being a real three day weekend, is sometimes a benefit, and sometimes not.

Hopefully, most of you will be able to travel on Friday, and take part in the **self-guided layout tours** for pre-registrants. You will get the map with your confirmation - so

VAN HOBBIES INC.

Model Railroad & Hobby Specialists
Established 1947

All Products Fully Guaranteed
Estate Appraisals

Ron J. Small and Bruce E. Eades

We purchase for cash:

- > Model Railroad Products Mon. - Sat. 9:30 - 5:30
- > Plastic Models Closed Sun. and Wed.
- > Die Cast Toys
- > Hobby Tools
- > Other Hobby Type Products

Phone: (604) 327 3210 Fax: (604) 327 7207
675 SE Marine Drive, Vancouver, BC V5X 2T5

Try our Web site out:

www.intouch.bc.ca/pub/van.hobbies
e-mail: van.hobbies@intouch.bc.ca

that means you must preregister at least two weeks ahead.

Scott Calvert will hold an **operating session** on his CPR Boundary Sub HO layout on Friday evening. The session will be limited to about 6 people - you must pre book for this event, so please contact Scott ASAP at (604) 939-1849 or Email: scottcalvert@home.com

The **guided layout tour**, on Saturday evening, will be in the Coquitlam area. 5 layouts, and good company on the buses - nirvana. Open only to meet registrants, please.

Last year there was an informal **non-rail tour** of quilt and craft shops. This year there will be a bused tour, leaving at 10am and returning at 4pm. Cost will be \$20 for this adult tour to Wineberries, Pat's Quilting, and in Fraser Reach - Fabricana, Fabric Land - and the largest Fanny's in B.C. There will be time for a no host lunch, probably in Fort Langley. You must pre-register for this tour, through the Trains Registrar. The registration form was in the last Bulletin Board, and is available from the website (www.bctrains.org) or your hobby shop.

The non-rail Coordinator is Pat Kelleway, 604-463-4682 Email: RC_KELLEWAY@telus.net

This year there will be the largest number of displays and operating layouts in years. The feature layout will

continued on Page 8



WEB SITES

Doug Hole reports that the Salmon Arm Model Railroader Association's site can be found at:

<http://www.holesome.com/theholescene>

Ken Rutherford writes: "there is a lot to see as this fellow has documented the building of his layout, structure by structure. A lot of good ideas.

<http://www.trevinocircle.com/wtw.asp> and the BC Archives site contains photos of E & N, CPR, CNR and PGE. - click on the "bordertown collection" highlight to access the photos.

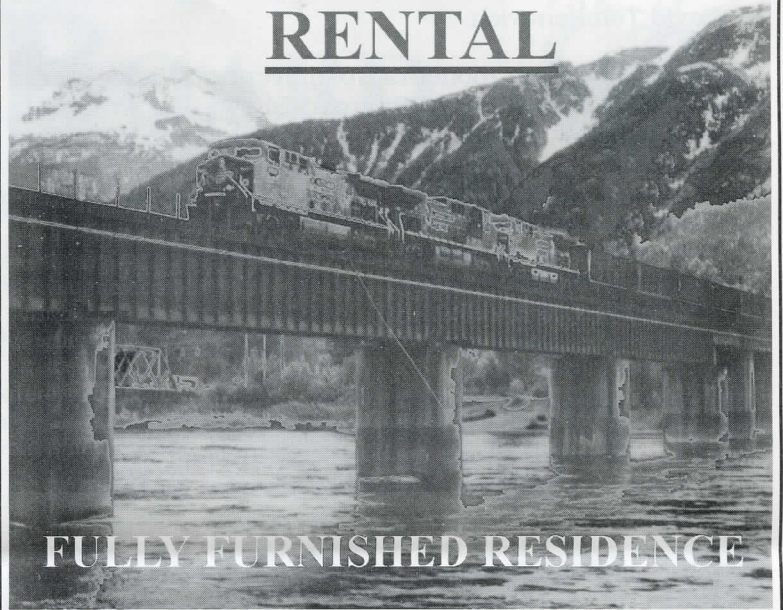
<http://www.bcarchives.gov.bc.ca/visual/visual.htm>

2141 by Roy Kelleway

The highlight of "Kamloops Railroad Days", held Sept 15th, was to see the Kamloops Heritage Railway 2-8-0 steam locomotive, #2141 fired up and working! The crew at the shop has laid approximately 200' of track out from the shop, but this does not, as yet, connect to the CPR main line. So, she was "all fired up-and had nowhere to go." Many volunteers have been working on rebuilding this Canadian Locomotive Co. 2-8-0 since 1996.

The #2141 was originally built for the Canadian Northern Railway, in 1912, as a coal burner, and was later converted to oil in 1948. Prior to retirement, #2141 could be found working near Cowichan, on Vancouver Island, pulling log flats, and mixed freight. After it's last run in July 1958, Kamloops Mayor Jack Fitzwater, saved this loco from being scrapped. The City of Kamloops purchased it for \$2000, and installed it in Riverside Park on Oct. 29, 1961. Needless to say, by 1996, it had deteriorated badly! Congratulations to the many hard working volunteers that have worked long hours to restore this great old locomotive!

REVELSTOKE RENTAL



FULLY FURNISHED RESIDENCE

2 bedroom, 950sq.ft., mfg. home on private lot in semi-rural setting on CPR Hill three blocks for downtown Revelstoke.

Package includes

appliances, bedding, linens, barbecue, cable, locale phone service

RATES

\$400/wk. or \$1200/month

Contact: John Meade Box 2009 Revelstoke, B.C. V0E 2S0

Ph: 250-837-4025 E-Mail: Rstoke837@AOL.com

Central Hobbies

Your one stop scale model train shop

Great selection of:

Tools, Books, Magazines, Videos and much more

Plastic Models and Paints

Open 6 days a week

2845 Grandview Hwy., Vancouver B.C.

Phone: 604-431-0771 FAX: 604-431-9855

Orders: Toll free: 1 888-7TRAINS

Our Web site is central-hobbies.com

Email: central_hobbies@bc.sympatico.ca

Victoria Show Report

by David Tomljenovich

The largest one day model railroad event on Vancouver Island, the Victoria Model Railroad Show, is a wrap. A successful show overall, attracting 1,800 at the Victoria Curling rink.

The crowd pleaser - voted best operating layout - was the Salmon Arm Model Railroad Club. The sawmill extension (work in progress) with its chip loader car movement addition is a nice touch. The completion of this extension will be a big attraction.

As usual there was a good representative of commercial and private sellers.

First time on the west coast, all the way from Ontario, was owner Dan Kirlin of Kirlin Scale Models, displaying his HO scale brass models of the CPR 60 foot Fruit Express Cars. The prototype cars, represented by this limited edition model, were used in the Vernon area of the Okanagan Valley. Very nicely done models. Also new to the show was artist George Williamson of Engine Art paintings of Vancouver Island logging locomotives, the Hillcrest logging Shay, and the historical McLean Mill, Port Alberni. George's paintings have graced the front cover of the "Narrow Gauge & Shortline Gazette" magazine more than once. Plus Larry and Lori Sebelley of Chilliwack brought their Canadian Pacific diorama of the Fraser Valley area. The Sebelley's captured the agricultural flavour through their modelling efforts. Great work.

In the popular vote contest The winners were awarded plaques with a picture of last year winner Ed Lewis' "Lewistown" Module. This year's winners are:

Locomotive: Patrick Sharman N Scale CPR steam locomotive

Rolling Stock: John Britt, HO Kit-bask Canadian National Mountain Observation Car

Structure: Scott Calvert HO Scale Trestle Bridge

Train: Mark Giles, HO Scale BCRail consist

Diorama: Scott Calvert, HO Scale

Model Photo: Mike Kocot,

Prototype Photo: Robert Turner

Module: David Tomljenovich, HO Scale Stillwater Cedar Shake Mill (Victoria To Sidney Model Railroad Club)

Operating Layout: HO Scale Salmon Arm Model Railway Club

Next year's 2002 poster will feature David Tomljenovich's "Stillwater Cedar Shake Mill" Module"

The "Jack Work Memorial Trophy" winner for 2001 was Patrick Lawson, MMR. The trophy was presented by Dick Sutcliffe, Publicity Coordinator & Past Superintendent. A well deserve award. Congratulations Patrick!

In closing and on behalf of the Show Committee I would like to personally thank the various club members volunteering their time on the admission tables. Also the various hobby stores who contributed door prizes. Also special thanks to Peter Thornton-Trump for the popular vote plaques and photographs, and our special public relations and advertising whiz.

Finally special thanks to my side-kick Ted Alexis. Remember to circle your calendar for next year for the largest one-day train show on Vancouver Island on September 8, 2002.

Trains 2001 Update continued from Page 6

be Salmon Arm's national award winning, and press featured layout. the will also be the Top Link groups, Norwes club, a huge Lego setup, Abbotsford club, TTOS, Vernon Club, TraiNgang, MMRS, DARS, a diorama by Warren Jones, and the Euro Trains display.

There are 5 **clinics** scheduled for Saturday 9:30am to 4:15pm

John Ostler - Land forms on layouts, Guy Brooke - Building a prototype diorama, Mike Barone - Locomotive maintenance, David Rees-Thomas - Train order operation on the CNR, David Burnett - more model railway electronics.

For the kids, on Sunday, Art Knapp's will supply LGB equipment and the GV Garden Railway Club will construct a display, for a hands on experience.

The **7th division's AGM** will be at 4:30pm on Saturday. This will be a no host 'dinner' meeting. You can sign up for a meal on a Subway menu Saturday morning.

Monday's **prototype tour** is not set yet, as this is the Statutory holiday, many industries will be shut down. We will post the location on the website as soon as the location is set.

The **Model Contest** plaques are finished - is your entry? A full range of categories for the registrants popular vote are open, as well as the Bulletin Board 6" x 6" contest.

Volunteers Needed for "Trains 2001"

Last year, thanks to the volunteer efforts of many Displayer groups, and persons registered for "Trains 2000" you helped make this one of the most successful shows yet.

This year we would again request that all attending Displayer groups submit the names of several of their members to give three hours Volunteer service, either on Saturday Nov. 10th or Sunday Nov. 11th. If possible, please indicate the times that these volunteers would be available.

We particularly require help during the Saturday morning table set-up (07:00 AM-09:00 AM), and the tear down on Sunday night.

All clubs with a non-commercial display will be eligible for an honorarium. Each display will receive a number of points according to the display evaluation formula. This includes a participation factor, and groups whose members volunteer their help, will receive these points.

All clubs are asked to submit the names of at least two volunteers with your registration application.

Or, contact Roy Kelleway at 604-463-4682, Email: RC_KELLEWAY@telus.net

Your help will be greatly appreciated.

Thank You, Roy Kelleway, "Trains 2000" Volunteer Coordinator.

VERNON SPRING MEET 2002

March 29 and 30, 2002

Best Western Vernon Lodge Hotel

3914 - 32 Street, Vernon, BC V1T 5P1
(250) 545 3385 \$94/night/room (incl. taxes/gratuity) flat rate

Registrar: Jack Smith, Registrar
Vernon Spring Meet 2002
5512 South Vernon Place, Vernon, BC V1T 8N6
(250) 542 6520

History of the Spring Meets: Model railroading get togethers at Easter have been held in the Okanagan since the late 70's. Originally alternating between Kelowna, Vernon and Kamloops, the spring meets were expanded to include Salmon Arm, Nelson/Castlegar and Revelstoke. **The purpose** of these two-day affairs is primarily to allow model railroaders attending to network and spend an enjoyable time with old friends. These meets are low-key and as low priced as we can make them, but at the same time as comprehensive and high quality as possible.


Friday, March 29, 2002

Set up is Friday morning from 0800 in the Vernon Lodge ballrooms under the direction of Rick Marsh. We will have three operating layouts and many displays. Self-guided **layout tours** are Friday afternoon. For the first 40 lucky registrants indicating they wish to go, the **Kelowna Pacific Yard Tour**, featuring M420's, will run from 2:00 p.m. **Beer and Burgers** (with salad), all for \$10, will start in the Ballrooms from 6:30 p.m. At 8:00 p.m., the **Slide and Video Nite**, hosted by Doug Campbell, will feature Harvey Shim's train wreck slides and, we hope, Jim Johnston and Phil Mason with their magical images. Doug Campbell will round out the evening with an excellent video presentation.

Saturday, March 30, 2002

Saturday starts with **commercial vendors** (sale items ?), **clinics** from 9 - 12 and the **swap meet**. Tables (with registration) are only \$5. Your cast-off antique is someone's priceless find! The **Public Show** goes at noon til 4:30 p.m. At 6:30 - 7:30, the pre banquet **Shop Talk** (precedes the smorgasbord **Banquet** with prime rib and baked salmon. The **Raffle** draw will be followed by a presentation by **Jim McPherson**, operations manager KPR, on "*Operating an Okanagan Short Line*" and "*Some Recollections on the Laggan and Mountain CPR Subs.*" We hope Jim Hope of CP in the Rockies fame will show some of his wonderful steam slides, as well.

Hope to see you at the Vernon Spring Meet 2002.



Hugh Clarke, Chairman