

BULLETIN BOARD

Volume 17 Issue 2

Mar/Apr 2003



*The Official Publication of the 7th Division, Pacific Northwest Region
National Model Railroad Association (Canada)*

The 18th Annual Mid-Island Spring Meet

by Rick Lord, Photos by William C. Slim

The 19th Annual Mid-Island Meet is fast approaching. We invite you to attend at Nanaimo's Beban Park Sunday April 27th, 2003. (see Page 6 for details, ED)

Last years 18th Annual event was held on April 21st 2002 at the same location, Nanaimo's Beban Park Rec Center. 730 enthusiasts passed through the doors to enjoy a day of operating layouts, contests, sales tables and renewing friendships. The popular choice winners were:

Favourite Train: Dave Quissy's HO scale 2 truck wood burning climax Locie pulling 1 modified boxcar loaded with cut slabwood, 5 flatcars of hand stacked lumber and a caboose.

Locomotive: Paul Robert's G scale 2 truck Climax

Rolling Stock: Richard Slingerland's On3 scratch built firewood car

Structures and Displays: Guy Brook's HO log dump at Ladysmith 2'x8' module

Layout: Victoria to Sidney Model Railway Club

For entering the favourite model contest three modelers each won \$20 gift certificates from Island Trains and Hobbies. This year's winners were Gerald Wolf, Dave Stark and Paul Crozier-Smith. We encourage you to share your modeling with others in the hobby, who knows maybe next year you will win an award and /or a gift certificate.

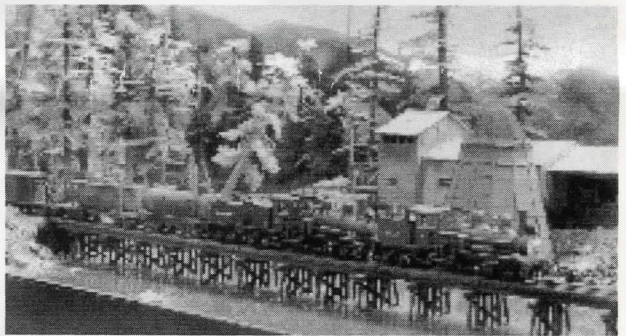
Special thanks to the following for donating door prizes; Charlie's Choo Chos - Courtenay; Island Trains and Hobbies -Nanaimo; Leisure Time Hobbies -Nanaimo; Pacific Scale Rail -New Westminster & Victoria; Van Island Garden Railway Club -Nanaimo; Moorefield Collectibles - Surrey.

The door prize raffle of a \$100 gift certificate was won by Jim Lewis of Lazo B.C..

Thanks go out to the following for bringing operating modules or displays: C.F.B. Esquimalt Model Railway Club N scale module layout; Victoria N Trak N scale module layout; Victoria to Sidney Railway HO scale module layout; North Island Model Railroaders HO scale module layout; Nanaimo On30 The Millennium Mines Railroad; Dick Sutcliffe for bringing and manning the P.N.R./N.M.R.A. booth (We had 59 NMRA members attend); Wayne Sheets for his operating - introduction to the "World's Greatest Hobby" Model Railroad layout; Vancouver Island Garden Railway Club; Ray Brown operating N scale layout.

A big thank you to all who helped setup tables and chairs, Sheila Kocot and family members who baked the delicious tarts and helped in setting up and running of the concession stand. To Victoria Bell, Amy Lloyd and Leanne Lord for looking after the admissions and door prize table. To Leslie Walerius for doing such a great job of selling raffle tickets. To Ed Warren and members of the Mid Island Railway Club for helping set up and the clean up crew for their efforts at the end of the day.

The 19th Mid Island show is booked for Sunday April 27, 2003. We look forward to seeing you there.



INSIDE THIS ISSUE

Super's Report

Member Aid

Welcome!

AP Corner

Timetable

Video Library List

Page 3

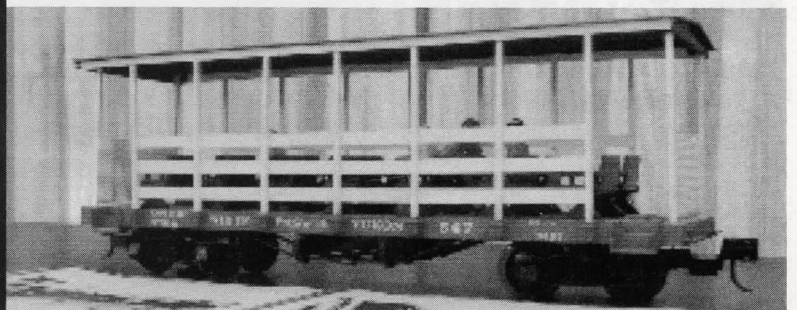
Page 3

Page 3

Page 4

Page 6

Page 8



7th DIVISION STANDING COMMITTEE

Executive

SUPERINTENDENT

Scott Calvert (604) 939 1849 (Coquitlam)

Email: scottcalvert@shaw.ca

ASSISTANT SUPERINTENDENT

Gary Hazell (250) 835 8628 (Tappen)

MEMBERSHIP COORDINATOR

Email: comhaven@shuswap.net

BULLETIN BOARD PRINTING & DISTRIBUTION

John Green (604) 322 8990 (Vancouver)

Email: greenjohn1@aol.com

TREASURER

Mike Barone (250) 367 6134 (Fruitvale)

Email: mike_barone@telus.net

DIRECTOR AT LARGE

Brian Clogg (604) 588 2194 (Surrey)

Email: bcclogg@direct.ca

Appointed Positions

PUBLICITY COORDINATOR & PAST SUPERINTENDENT

Dick Sutcliffe (604) 467 4301 (Maple Ridge)

Email: dicks@axionet.com

7th DIVISION AP CHAIRMAN

Terry Mitchell, MMR (250) 339-1003 (Comox)

Email: terrmit@yahoo.com

ROSS HERIOT GOLDEN SPIKE AWARD COORDINATOR

Hugh Clarke (250) 545 3900 (Vernon)

Email: hughclarke@shaw.ca

LOWER MAINLAND AP REPRESENTATIVE

Dave Nickerson (604) 929 8057 (North Vancouver)

Email: d-nickerson@telus.net

BULLETIN BOARD EDITOR &

VANCOUVER ISLAND AP REPRESENTATIVE &

JACK WORK MEMORIAL TROPHY COORDINATOR

Russ Watson (250) 384 3495 (Victoria)

Email: russwatson@telus.net

MEMBER AID CHAIRMAN &

BULLETIN BOARD PRINTING & DISTRIBUTION

Bob Gardner, MMR (250) 832 9883 (Salmon Arm)

Email: rvongard@jetstream.net

VIDEO LIBRARY

Don Forsyth (250) 338 4497 (Courtenay)

Email: D.Forsyth@telus.net

WEB MASTER

John Zuk (604) 984 3232 (North Vancouver)

Email: jazuk@telus.net

Lower Mainland & Fraser Valley Subdivision

Darren Brkich (604) 888 1776 (Langley)

Email: darren_brkich@hotmail.com

Doug Kelleway (604) 916 9540 (Surrey)

Email: mawsypapa@hotmail.com

Roy Kelleway (604) 463 4682 (Maple Ridge)

RC_KELLEWAY@telus.net

John Moore (604) 463 7745 (Maple Ridge)

Email: jegmo@telus.net

Lori & Larry Sebelley (604) 858 5717 (Chilliwack)

Email: sebelley@shaw.ca

Interior Subdivision

Brian Freemantle (250) 564 2225 (Prince George)

Email: bfreemantle@shaw.ca

Ken Haun (250) 632 6334 (Kitimat)

Email: kenhaun@sno.net

Vancouver Island Subdivision

Ted Alexis (250) 595 4070 (Victoria)

Rick Lord (250) 724 4205 (Port Alberni)

Email: rblord@telus.net

Ken Rutherford (250) 724 4698 (Port Alberni)

Email: kj.rutherford@shaw.ca

NMRA-PNR Trustee: Roger H. Ferris, EdD. (206) 283 0637

Email: railfun@juno.com

QUESTIONS?????

Please feel free to contact any of the above members if you have questions, comments, suggestions or concerns. The strength of any organization is with it's members! DIRECT YOUR MODELLING QUESTIONS to our 7th Division Member Aid Chairman, Bob Gardner, MMR, Voice: (250) 832 9883, Fax: (250) 832-0681, Email: rvongard@jetstream.net

The National Model Railroad Association (Canada) is a separately incorporated section of the National Model Railroad Association Inc. headquarters in Chattanooga, TN. NMRA (Canada) is presently a non-profit organization dedicated to preserving our railroad heritage through the promotion of model railroading and by promoting and recognizing craftsmanship and service to others within the hobby.

NMRA/PNR RENEWAL

To renew your NMRA and PNR/7th Division membership, send \$83 Cdn to Steve Prevette PNR Office Manager, 4214 Hilltop Dr., Pasco WA 99301 USA, Email: <prevette@owt.com> MasterCard, VISA, American Express, Diner's Club and Discover charge cards accepted. Make your cheque payable to PNR/NMRA

7th DIVISION VIDEO LIBRARY

Please phone, write or Email to request the tapes you would like to borrow and they will be mailed to you prepaid. After use, you are required to mail them back 'Proof of Delivery with \$100 insurance'. **Please keep your return postage receipt for tracing purposes in case the tapes are lost in the mail.** Check your membership expiry date on your *Bulletin Board* mailing label. If it has expired, please renew it now using the form included with the *Bulletin Board* (or above) before requesting to borrow tapes. The library address is:

7th Division Video Library, c/o Don Forsyth, 2022 Cedar Crescent, Courtenay, BC V9N 3B6, phone (250) 338 4497 Email: D.Forsyth@telus.net

A full list of tapes is published in the March and September issues of the *Bulletin Board*

The *BULLETIN BOARD* is published six times per year as follows:

Submission	Mailing	
Deadline	Date	Month
November 15th	December 15th	Jan/Feb
January 15th	February 15th	Mar/Apr
March 15th	April 15th	May/Jun
May 15th	June 15th	Jul/Aug
July 15th	August 15th	Sep/Oct
September 15th	October 15th	Nov/Dec

The *BULLETIN BOARD* is distributed to all Seventh Division members in good standing. Editorial opinions and those stated in articles do not necessarily reflect those of the Seventh Division Standing Committee.

CONTRIBUTIONS of Letters, Articles, Event News, Plans, Photographs and Art are encouraged and welcomed and may be sent to the *BULLETIN BOARD* Editor:

Russ Watson #801-450 Simcoe St Victoria BC V8V 1L4 (250) 384 3495 (Home)

Email: russwatson@telus.net

Please use Email whenever possible. The Editor uses a Macintosh computer which is capable of translating a wide variety of file types including most PC files.

All *COMMUNICATIONS* directed to the Division should be forwarded to the Superintendent: Scott Calvert 1869 Walnut Crescent Coquitlam BC V3J 7T2

Email: scottcalvert@shaw.ca

MEMBERSHIP RENEWALS and *ADDRESS CHANGES* must be sent to the PNR Office Manager: Steve Prevette, PNR Office Manager, 4214 Hilltop Dr., Pasco WA 99301 USA,

Email: <prevette@owt.com>

All other *MEMBERSHIP INQUIRIES* including *NEW MEMBERSHIPS* must be forwarded to the Membership Coordinator: Gary Hazell RR #1 S-4 C-6 Tappen, BC V0E 2X0 (250) 835 8628, FAX (250) 835-8521, Email: comhaven@shuswap.net

ADVERTISING in the *BULLETIN BOARD* is accepted at the following per issue rates: Full Page = \$48.00, Half Page = \$24.00, Quarter Page = \$12.00, Business Card = \$6.00, Pike Ads = \$1.50

Artwork should be supplied in the appropriate size. There may be an additional charge to complete artwork that is not camera ready. Please mail your artwork and remittance, payable to the "7th Division PNR/NMRA," to the Editor's address listed above.

NMRA WEB SITES

7th Divison
PNR
NMRA

http://www3.telus.net/7division,
http://www.infoharvest.ca/NMRA/PNR/
http://www.nmra.org

SUPERINTENDENT'S REPORT

by Scott Calvert

Well, I hope everyone had a wonderful holiday season and had the opportunity to relax with family and friends. Perhaps there was even a "treat" under the tree for you!

It has been relatively quiet since last issue, especially since many of us are enjoying some down time after the BIG Trains 2002 meet! Once again, congratulations to Dick Sutcliffe and the entire committee for an excellent convention.

Unfortunately, there is no official 7th Div spring meet this year, but make sure you mark your calendar for the Nanaimo train show on April 27th. Check the timetable in the BB and on the web site for other upcoming activities as well (*please see the attached registration form for an un-sanctioned meet n Kamloops ED*). We have an excellent set of annual conventions and public shows in the Division, but I personally believe we could benefit from other activities as well. Years ago, we had regular monthly clinics, and from time to time we had a set of layout tours on a Saturday or Sunday. I mentioned this idea some time ago and received a couple of comments back, so I am raising it again to see if there is any further interest.

During the recent PNR e-meeting, the executive dealt with a few issues. These included finalizing the close out for the 2001 Kelowna convention, formalizing the mechanism for the membership rebates to the Divisions, and concluding the audit for last years books. The PNR will have new Committee chairs for membership and conventions in the near future.

Well that's all to report for now – back to the train room!

EDITOR'S DESK

by Russ Watson

The NMRA convention held in Fort Lauderdale, Florida, last July was poorly attended. Possible travel concerns following September 11th and thoughts that the temperature in Florida in July would be just too high, are reasons that some people believe resulted in the low attendance. The rather high increase in NMRA membership dues prior to the convention may also have been a factor. Historically, membership increases just prior to each convention as non-NMRA members buy a membership to allow them to attend the National.

The NMRA brass are looking at ways to increase the attendance at Nationals. Apparently, they are considering a change in policy that would allow anyone - NMRA member or not - to attend NMRA National Conventions. Non members would be required to pay a fee over and above the normal registration fee, but would not have to join the NMRA.

One could argue that the historical yearly increase in membership would decline if nonmembers were allowed to attend. Conversely, a case could be made that if

attendance improved dramatically, a profit could be made for the benefit of all members and possibly the exposure of the NMRA to many new faces would result in an increase in membership following the convention.

What are your thoughts? Please share them with us through the Bulletin Board and I know that your PNR Trustee, Roger Ferris, would love to hear from you on this issue or any other NMRA issue. His contact info is included at the bottom of page 2.

We are fortunate to have many excellent modellers in our division. Please take a few moments to read the enclosed Jack Work Award information and consider nominating a member for this very prestigious award.

The 7th Division is alive and well with the next two model railroad events in BC being the Kamloops High Country Rails meet on April 18th and 19th and the Mid-Island show in Nanaimo on April 27th. I hope you can get out to these exciting events, please see the Timetable on page 6. for complete info.

WELCOME!

A very warm welcome to the following new Seventh Division member(s):

René Gourley
Adrian Telizyn

North Vancouver
Fort Saint John

Please feel free to direct any questions, comments or concerns to any of the members, especially Bob Gardner, the 7th Division Member Aid Chairman, and those listed on Page 2. We look forward to meeting you at any of the 7th Division events.

MEMBER AID

by Bob Gardner, MMR, Coordinator

Please feel free to contact me with any modeling questions or problems. In the meantime, here a few thoughts of my own.

Track Planning

After Christmas some members may possibly be thinking of designing (or redesigning) a layout, or know of someone, possibly a newcomer to the hobby, who is. Some points to aid in planning are:

Modular construction

- Try to design the layout in standard-size sections like "dominos"
- Consider building only one or two of these sections at first
- Not as forbidding as building all benchwork and laying all track at once
- Can connect modules with single track on a narrow shelf or piece of plywood
- More sections can be added as time and ambition occur.
- Can experiment with track-laying & scenery techniques on a small scale

continued on Page 4

Member Aid continued from Page 3

- Trains can be run earlier than if the whole railroad had to be completed.

- Can be easily dismantled should a move be necessary. (On my previous railroad the main yard had been set up in seven different basements in two provinces!)

Scale

The scale you select obviously determines how much railroad you can put in a given space. A nice N-scale layout can be built on a door.

Type of Operation

- Thought should be given to the type of train-running you prefer

- Continuous loop (can be built on narrow benchwork along the wall)

- Point-to-point (can also be built on narrow shelf but generally requires turning facilities at each end)

- "Out-and-back" - requires a return loop at one end of the layout

- Industrial or city switching (can be very realistic without occupying much space)

- Way-freight switching - many industries to switch along the main line make the run seem longer. Occasional passing tracks permit "running around" a car and allow a second train to pass.

Era to be Modelled

- Modern railroading with big 4000 HP locos and 90-ft. freight cars requires large-radius curves to operate well and look realistic.

- Transition (steam-to-diesel) era can be modeled with smaller radius curves as long as the steamers are not too large.

- Old-time, standard and narrow gauge railroads are probably the most forgiving for curve radii.

Once the era has been established, the appropriate curves can be selected. A general rule-of-thumb is: keep the radii as large as possible commensurate with the space available. In HO, 24-inch radius is the preferred minimum with 30-inch, or larger even better. N-scale, of course, requires only half of this. With this information and the type of operation in mind you can start drawing a track plan.

Draw a Track Plan

- Draw the layout space to scale (1/2" = 1 foot is handy but larger is better)

- Those with computer skills and a CAD program have an advantage here.

- Using a school or drafting compass sketch in a few of your chosen radii to "get the feel" of the space available.

- In the past the tendency was to try to fill all available space with track (the so-called "plate of spaghetti"). Today the trend is to simpler track plans with an attempt to have tracks pass through a given scene only once (a "sincere" plan.)

- Hidden or visible staging yards allow many trains to operate.

- Keep all tracks within reach - usually not more than 30" from layout edge.

- Remember a 30" radius return loop occupies a 5-foot circle of benchwork. (A duck-under and access hole may be required.)

- Critical operating features such as a turntable or

complex track work should be within easy reach.

- A common pitfall is drawing in more yard trackage than can be accommodated. Draw in the yard "ladder" for the switches you wish to use. (a No. 6 switch requires 6" of run to spread".)

- Keep aisles to at least 2 ft. wide, 3 ft. is better.

- Draw several different arrangements before settling on one.

- Show your plan to anyone who will listen and ask for comments.

- But always remember:- "THIS IS YOUR RAILROAD!" HAVE FUN!

AP CORNER

by Terry Mitchell, MMR
7th Div AP Coordinator

Okay...Show of hands out there. Who has built a model of some kind? Let's see, you, you, you, you and you. Most of you out there have built at least some kind of model. You know what? That means you are on your way to a certificate in the Achievement Program. The Achievement Program, or AP has a certificate out there for every level of skill in Model Railroading. As I said in last time's column, I think the AP is the single greatest benefit of being in the NMRA. I urge all of you to participate in this program. It will benefit you in ways that you might not have thought about before. You will become a much more accomplished model

continued on Page 5

VICTORIA SCALE RAIL LTD.

Exclusively Model Trains and Accessories

Vancouver Island's One-Stop Railroad Store

Model Railway Specialists

Friendly Service and Knowledgeable Staff

- ▶ N, HO, O and G Scales
- ▶ New, Used and Consignment
- ▶ Special Orders and Mail Order

Digitrax DCC

Detail Parts, Books, Magazines,
Videos and Scenery Supplies

Mon-Thurs 10:00-6:00, Fri 10:00-9:00 Sat
10:00-6:00, Sun 12:00-5:00

Town & Country Shopping Centre

Unit 16A - 3577 Douglas Street

Victoria, BC V8Z 3L6

(250) 475-2860

Email: vsr@telus.net

Terry Moore, Owner/Manager

AP Corner continued from Page 4

builder. You will meet many new friends. You will gain a satisfaction from sharing your skills with others. The last one is one benefit that I never, ever thought about, until I experienced it.

For many modelers, their first venture into the AP is the Golden Spike Award. The Golden Spike Award has three requirements. First, is to build six units of rolling stock. Second is to create a model railroad setting, with structures and scenery. And third, is to perform some kind of engineering.

I like to say there are two kinds of models, the kind that roll, and the kind that don't roll, unless there is some sort of cataclysmic force. Models that roll, are locomotives, and cars. Cars can be freight cars, passenger cars, or caboose. To meet the requirements for the Golden Spike, you must display six units of rolling stock. The requirements further state that the models must show a little bit more effort than shake the box kits. This is where one of the benefits of the Achievement program starts to work. You are asked to show some effort to make your models different from anyone else's that might build the same model. This involves adding weathering, or changing the road number. You might consider adding a few detail parts. The idea is to show some individual effort and creativity to your six models.

The second requirement is to construct a model railroad setting. Part of this is to build what I like to call, "models that don't roll". (Unless the aforementioned cataclysmic force is applied.) Some folks call these models "structures". You must build 5 different structures. Once again, the requirements say that a little individual effort applies here. You need to show that you can do more than glue a plastic kit together. Painting, weathering, and detailing opportunities abound.

Part 2 of the second requirement is to build some scenery. No matter what scale you model in, the requirement is the same. You must have at least 8 square feet of scenery. I have no trouble imagining what 8 square feet is, because I grew up in the states. There, the metric system is something you learn in school, and forget about afterwards. But since I moved here from Texas, I have been re-acquainting myself with the metric system. But the area requirement is about a fourth of a sheet of plywood. As before, some effort is required. You can't paint a board green and call it scenicked. You gotta' show some logical terrain and ground covering.

The third requirement is to do some engineering. This involves Civil and Electrical engineering. Civil Engineering is building trackage. You have to build three types of track. These are pretty easy, you can go to the hobby store and buy turnouts and some straight, or curved track, or flex-track. It must be installed on some kind of roadbed and be ballasted just like the real guys do.

The Electrical part of the requirement is that the track must be properly wired so that two trains can be run at the same time. This is either double track, like the typical module. Or it can be a single track with a siding and a switch to cut power to that part of the track. Another part of the requirements is that you have to have one additional electrical feature. This can be a powered

turnout, or a light inside a building. Nothing complex, or you can make it as complex as you like. It can be a powered carnival with merry-go-rounds and Ferris wheels, your choice.

Note, in all these requirements they don't have to be on the same display, or even in the same scale or gauge for that matter. If your layout display has only one structure, you can build the others and display them on a shelf in your home. The requirement is that you build them, that's all.

The last part of the Golden Spike Requirements is to fill out the form, and state what you have done. This form is different from the rest of the AP forms, in that it is a checklist. The others are more like essay tests. After you have the form complete, it has to be reviewed by someone to judge it against the requirements. Contact me to get it judged.

If you have any questions about the Golden Spike Award, or any other aspect of the AP, call me or write to me. My address, email, and phone number are include on Page 2. Or if you have access to a computer with the Internet, you can go to www.nmra.org/achievement. There you will find all of the forms for you to print off and all the requirements for the various categories of the AP.

PACIFIC SCALE RAIL

"The Trains Only Store"

Modellers working with Modellers

Specializing in:

Friendly Service.
Expert Advice.
Canadian Roadname Models.
Detail Parts.
DCC.
MicroTrains Special Run Cars.
(CNR 3-Packs available now)
Budget Friendly Used Trains.
Free Workshops.
Books and Magazines.

**612 Carnarvon Street
New Westminster, B.C.**

Phone: (604) 524-8825

Toll Free: 1-800-377-2860

Fax: (604) 524-6664

For your convenience, we are open 7 days a week!!
Come and see our wide selection of "N" and "HO" items

or visit us at.....

www.pacificscalerail.com

TIMETABLE

March 1 - BILLINGS MT - Billings Model Expo, Shiner's Auditorium, 1125 Broadway Ave., 10am-4pm. Info: - Model Expo PO Box 166, Billings MT 59103-0166, or Dick Nixon, (406) 245-9153, nixcol@msn.com

March 1 - PORTLAND OR - 25th Annual Railroadiana & Model Railroad Swap Meet, sponsored by the Columbia Gorge Model RR Club. Jackson Oregon National Guard Armory, 6255 NE Cornfoot Road. Take NE Columbia Blvd to NE 47 or NE Alderwood and go north to Cornfoot. 10am-4pm. Info: - Doug Auburg c/o CGMRC 2505 N. Vancouver Ave. Portland OR 97227, (360) 694-7769, dauburg@wa-net.com

March 15-16 - SEATTLE WA - Great American Train Show, Washington Stadium & Exhibit Center, 1000 1st Ave. 11am-5pm. Info: www.gats.com

March 16 - BURNABY BC - 21st Annual Western Rails Railroadiana & Model Railroad Show, Cameron Recreation Centre, 9523 Cameron Street, info: David Emmington, 604 461 0366

March 22 & 23 - EUGENE OR - 15th Annual Willamette Cascade Model Railroad Club Train Show and Swap Meet, Lane County Fairgrounds, 796 W 13th Ave, Expo Hall, South Side of the complex, Sat 10-5, Sun 10-4, Info: Lee Temple, 1783 Linwood Ave, Eugene OR 97404, 541 688-9112 Email: ttandt@bauercom.net

April 12-13 - MOOSE JAW SK - Thunder Creek Model Railroad Club Model Train Show, Moose Jaw Western Development Museum, 50 Diefenbaker Drive, 9am-5pm, Info: Jackie Hall, 306 993 5989, wdm.mjwdm@sasktel.net

April 18 & 19 - KAMLOOPS BC - High Country Rails 2003, Best Western Hotel, 1250 Rogers Way, Public Show Friday 6:30 to 9 pm, Saturday 10 to 4 pm, \$6, family \$6, under 6 free. Please see enclosed registration form for meet full info.

April 19 - KENT WA - Boeing Employees' Model Railroad Club Open House and Train Show, Boeing's Kent Recreation Center, 22649 83rd Ave S, 10-4, Info: Byron Osborn, 2227 S 292nd Street, federal Way WA 98003 206 655-0822, Email: president@bemrrc.com www.bemrrc.com

April 26 & 27 - MONROE WA - 12th Annual United Northwest Model Railroad Club's Show and Swap Meet to benefit EquiFriends, Evergreen State Fairgrounds, Monroe, Info: peter@cascadenscale.org

April 27 - NANAIMO, BC - Vancouver Island Spring Model Railroad Show, Beban Park Rec Center (2300 Bowen Rd), 10 - 4, Adults \$4, Family \$8, NMRA \$3, Layouts, Swap-n-shop, Model contests, Sales tables \$20.00. Info: Ken Rutherford (250) 724-4698 Email: kj.rutherford@shaw.ca or Rick Lord (250) 724-4205

May 16-18 - WAINWRIGHT/LLOYDMINSTER, AB/SK - "Border Rail" 6th Division 38th Annual Convention, Lakeland College, Lloydminster Campus. Info: Jim McArdle, 5408 48th Street, Loydminster, AB T9V 0J7 Email: registrar@borderrail.ca www.borderrail.ca

May 16 & 18 - BELLEVUE WA - Cascade Crossing, 4th Division Spring Meet, Bellevue Hilton, 100 112th Ave NE, Info: Russ Segner, Email: rsegner@qwest.net

June 28-29, SPOKANE WA - Great American Train Show, Spokane fair & Expo Center, 404 N. Havana. Expo. 11am-5pm. Info: www.gats.com

July 13-19 - TORONTO, ON - MAPLE LEAF 2003, NMRA National Convention, International Plaza Hotel & Convention Centre, 655 Dixon Rd, Toronto, ON. Info: Email: info@ml2003.com Registrar Email: registrar@ml2003.com www.nmra.org

August 6-10 - Eugene, OR - (see below)

September 3-6 - FIELD, BC - Spiral Conference IV

September 7 - VICTORIA, BC - Victoria Model Railway Show, Victoria Curling Club 1952 Quadra St, 10-4, hourly door prizes, pop vote contest, operating model railroads, sales & displays, Info: Ted Alexis (250) 595-4070, David Tomljenovich (250) 652-1894

PNR CONVENTION DATES

August 6-10 - EUGENE, OR - 2003 PNR 'Tunnel Country' Convention, Eugene Hilton Hotel & Convention Center, Convention registration is \$75.00 (\$115.00 CDN) before May 1, 2003 (\$95.00 US after 5-1-03). Additional information can be obtained from the convention registrar Dave Kleger, Registrar, 2154 Golden Garden St., Eugene, OR 97402-6107, telephone: 541-689-2536. www.tunnelcountry2003.com

VAN HOBBIES INC.

Model Railroad & Hobby Specialists

Established 1947

All Products Fully Guaranteed

Estate Appraisals

Ron J. Small and Bruce E. Eades

We purchase for cash:

- > Model Railroad Products Mon. - Sat. 9:30 - 5:30
- > Plastic Models Closed Sun. and Wed.
- > Die Cast Toys
- > Hobby Tools
- > Other Hobby Type Products

Phone: (604) 327 3210 Fax: (604) 327 7207
675 SE Marine Drive, Vancouver, BC V5X 2T5

Try our Web site out:

www.intouch.bc.ca/pub/van.hobbies
e-mail: van.hobbies@in touch.bc.ca

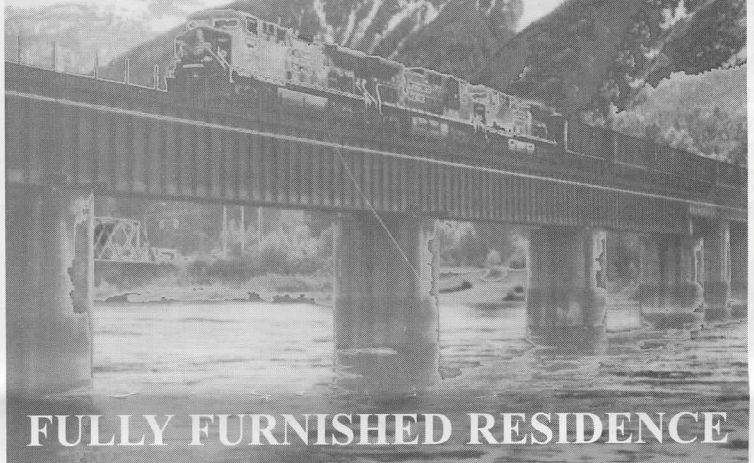


Photo by William C. Slim,
Nanaimo Show, April 21, 2002

Is your membership expiring?

Please check the expiry date on the mailing label on the envelope that this *Bulletin Board* arrived in and follow the instructions on Page 2 to renew now.

REVELSTOKE RENTAL



FULLY FURNISHED RESIDENCE

2 bedroom, 950 sq.ft., mfg. home on private lot in semi-rural setting on CPR Hill three blocks from downtown Revelstoke.

Package includes

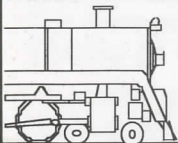
appliances, bedding, linens, barbeque, cable, local phone service. It is our endeavor to provide an affordable accommodation that allows you to spend the time to get to know and appreciate our community's local culture and natural beauty.

For Rates & Availability

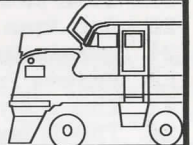
on the web at: www.revelstoke-rentals.com

Contact: John Meade Box 2009, Revelstoke, B.C. V0E 2S0

Ph: 250-837-4025 • E-mail: Rstoke837@AOL.com



CENTRAL HOBBIES



One-Stop Scale Model Train Shop! Central Hobbies is one of Vancouver's finest Model Railroad Stores. We carry an extensive selection of Model Railroad Products, Tools, Books, Magazines and Plastic Models.

Z Scale, N Scale, HO, Scale, S Scale, O Scale, G Scale, and others. Brass Models, Videos on Railroad Subjects and Greater Vancouver's finest selection of Model Railroad and Railroad Prototype Magazines and an extensive selection of Books on Railroad Subjects & Services. We handle Estates, Consignment sales, Custom painting and Locomotive Detailing, DCC Installations and other services. Mail Orders Welcome!

We carry the full line of DIGITRAX DCC (Digital Command Control) products. Please drop by the store for product information or a Demo. We also carry DCC products from SoundTraxx and Atlas.

2845 Grandview Hwy Vancouver BC Canada V5M 2E1

Phone 1-604-431-0771, Fax 1-604-431-9855

Orders Only 1-888-7TRAINS (1-888-787-2467)

Email: Central_Hobbies@telus.net

Web Site: www.central-hobbies.com

Mon-Thurs 11:00 - 6:00 Fri 11:00 - 9:00 Sat 10:30 - 5:30 Closed most Sundays & Holidays