

BULLETIN BOARD

Volume 20 Issue 5

Sept/Oct 2006

The Official Publication of the 7th Division, Pacific Northwest Region National Model Railroad Association (Canada)

Central Pacific Railway in N-Scale



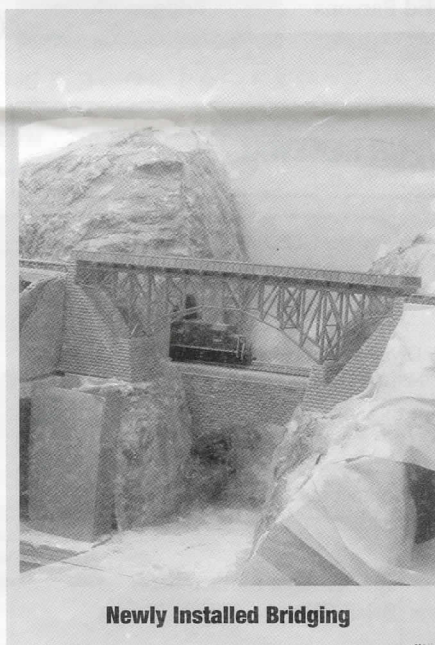
ED PARSONS AND THE CENTRAL PACIFIC RAILWAY

On the first of July 2003 we moved from Ashcroft to the town of Chase located at the mouth of the Little Shuswap. The hard part was demolishing my N-Scale layout "The Thompson - Highland Valley Railway", which was about 85% completed. Five years of love and dedication went into the construction, and I think I went into depression for about six months after the move. For you see, the house we purchased had an unfinished basement and it took almost a year to complete construction of the basement, and of course it was in my best interest to complete Wanda's "That's my better half", sewing room first because, as most men know, who have been married for any length of time, it pays to keep the wife happy if you want to continue railroading and purchasing all the little things we need, or think we need, to keep our railway running smoothly.

Another major benefit of the move was getting the chance to join the Salmon Arm Model Railroad Association. I consider it to be a great honor and a privilege to be accepted into such a fine group of individuals. The amount of talent and experience that is spread out among the members of this club is mind boggling, and I find it a joy to learn from such distinguished modelers such

as Jim Goldthorp, Bob Gardner, Gary Hazell, Grant Pearson, and many more. Not only are they great modelers, but a great bunch of guys, and I look forward to every Tuesday meeting night. I have been in the hobby for 33 years myself and I've found out that I really don't know all that much, and it's a lot of fun to learn new aspects of the "Greatest Hobby In The World".

Another advantage of starting over in a new home, with no rooms in the basement, I could build the railway room to fit the layout plan. I found it was better to build the train room to fit the layout, rather than building the layout to fit the room. The new layout is in a room approximately 12' x 22', of course I had to negotiate around the cold room and electrical panel, and last but not least two posts holding up the house. Also located in the room is a 4' x 6' work area where I have set up my workbench and storage shelves. Two lighting systems were installed, florescent to give me plenty of lighting when doing construction, and incandescent lighting, with each bank of lights on dimmers for when we do operating sessions, and of course when viewed by the public. All the lighting is hid behind a 2' valance that runs all around the layout. Operation of the layout will be DCC "Digitrax", which in my opinion is the only way to go!



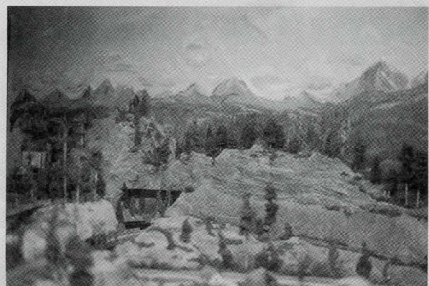
Newly Installed Bridging

The track work on the new CPR, "Central Pacific Railway", will be Atlas code 55 rail, with Atlas #7 turnouts on the main line, and I'm hoping to scratch build the majority the remaining turnouts in the yards. There will be approximately 110' of double main line and a 56' branch line serving an open pit copper mine, and underground coal mine. This branch line will also service a cement plant and a rock quarry. The ore from the mines will be brought down to the smelter located in the town of Austin. From there the

Inside this Issue

- Central Pacific Rwy Video List
- Trains 2006

finished product will shipped by rail, of course, to the seaport near the city of Shanay. On rout the train will pass over two major rivers, the "Amber" and "Shacary" rivers. Also located on this fictitious railway will be a 4' x 8' logging operation, and a container port.



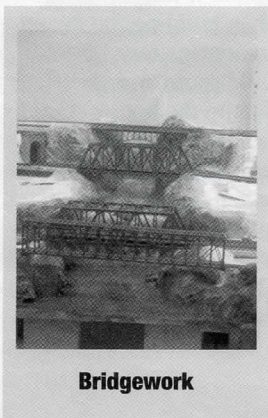
Thompson-Highland Valley Railway

To date, all the bench work has been completed, and the entire sub-roadbed has been installed. About 50% of the mainline has been laid down. The construction crew has managed to install all four of the major bridges over the Shacary River and completed the scenery, and the water is pouring over Shacary Falls. Two bridges

have been installed over the Amber River and construction is proceeding nicely with installation of the remaining bridges so that the track crew can continue on with laying track on the main line. Hopefully, trains will be running on limited schedule by the end of this year

So far, this new layout has been a challenge, but it's also given me great enjoyment to finally see my vision come to life, and I'm sure that in the months and years to come there will be more challenges to overcome, and of course a lot of pleasure seeing trains operating, and having good friends over just to enjoy the hobby of Model Railroad-ing. As construction on the Central Pacific Railway proceeds, I hope to submit more articles with pictures on its progress.

Ed Parsons



Bridgework

Editor's Desk

Eric Reynard

Boy, do deadlines sneak up on you. I can't believe it is time to send out another Bulletin. My modelling these past few months has mostly been limited to sound decoder installations, having purchased a couple of new Tsunami decoders. I spent the better part of a couple of days measuring and figuring and still couldn't fit anything but a motor control decoder in my new Bachmann Climax so am now scratchbuilding a tool car to follow behind with the sound-only decoder and speaker. The advent of sound decoers in such small and usable packages has certainly enlivened my train room. Steam locomotives just aren't the same without sound. Now if they would just come down to the price of Kadee couplers...

We feature a home layout in this months' Bulletin and it is once again from the Salmon Arm club. No arm twisting was involved. It arrived with no other coercion than the request in the Bulletin for articles so if you want to see your work in print send it along with photos and we can make you famous.

In passing through our local mall the other day I was struck by how fortunate we (SAMRA) are to have a relatively permanent space to display and work on our layout. Without the cooperation of their management I believe our layout would be less well developed. Opening to the public every Saturday is a small price to pay.

My thanks to all the contributors this month and my apologies to those of you who have submitted things and we have not yet published them. They will be in the next issue. keep the good stuff coming

-Editor

The **BULLETIN BOARD** is published six times per year as follows:

<u>Submission</u>	<u>Mailing</u>	
<u>Deadline</u>	<u>Date</u>	<u>Month</u>
November 15th	December 15th	Jan/Feb
January 15th	February 15th	Mar/Apr
March 15th	April 15th	May/June
May 15th	June 15th	Jul/Aug
July 15th	August 15th	Sep/Oct
September 15th	October 15th	Nov/Dec

The BULLETIN BOARD is distributed to all Seventh Division members in good standing. Editorial opinions and those stated in articles do not necessarily reflect those of the Seventh Division Standing Committee.

CONTRIBUTIONS of Letters, Articles, Event News, Plans, Photographs and Art are encouraged and welcomed and may be sent to the BULLETIN BOARD Editor:

ADVERTISING in the BULLETIN BOARD is accepted at the following per issue rates: Full Page = \$48.00, Half Page = \$24.00, Quarter Page = \$12.00, Business Card = \$6.00,

Artwork should be supplied in the appropriate size. There may be an additional charge to complete artwork that is not camera ready. Please mail your artwork and remittance, payable to the "7th Division PNR/NMRA," to the Editor's address listed above.

NMRA/PNR RENEWAL

All MEMBERSHIP INQUIRIES including NEW MEMBERSHIPS must be forwarded to the Membership Coordinator: Don Hillman, registrar@nmracanada.ca Registrar, NMRA Canada, 69 Schroder Cres, Guelph ON N1E 7B4

To renew your NMRA and PNR/7th Division membership contact Don Hillman at registrar@nmracanada.ca Registrar, NMRA Canada, 69 Schroder Cres, Guelph ON N1E 7B4

The 7th division PNR NMRA is updating our list of model railroad clubs and groups in our division. Please contact me with the following information if you want your group to be listed.

Group name; Group contact name;

Building layout? Round robin group? Looking for members?

E-Mail &/or address &/or phone :Brian Clogg bcclogg@shaw.ca

15440-99a AVE, Surrey B.C., V3 R 9H4

7th Division Video Library

NMRA, Pacific Northwest Region, 7th Division

Video and DVD Library

Great Model Railroads

- 1) New England, Berkshire & Western (HO)
- 2) Franklin & South Manchester (HO)
- 3) South Ridge Lines (HO)
- 4) Utah Midland (HO)
- 5) M & K Division of B & O (HO)
- 6) Hoosac Valley (HO)
- 7) Indian Creek Valley (HO)
- 8) Granite Mountain (HO)
- 9) L & N, Henderson Div. (HO)
- 10) Cumberland Valley (N) (2)
- 11) Virginia & Ohio (HO)
- 12) Western Maryland (HO) (2)
- 13) Stoney Creek & Western (HO)
- 14) Allegheny Midland (HO) (2)
- 15) Yosemite Valley (HO) (2)
- 16) Toulumne Forks (On3) (2)
- 17) Cat Mountain & Sante Fe (HO) (2)
- 18) Erie, Delaware Division (HO) (2)
- 19) Coal Belt (HO) (2)
- 20) Brandywine & Benedictine (HO) (2)
- 21) Western Eclectic (5 layouts) (2)
- 22) Narrow Gauge (Sn3,On3,&3/8n3) (2)
- 23) Western Hoosac Division (HO) (2)
- 24) Franlin & South Manchester (HO) (2)
- 25) New England, Berkshire & Western (HO)

Model Railroads

- M1) Seventh Division Layouts
- M2) Cutting scale lumber
- M3) Introduction to English Garden Railways
- M4) Model Magic - part 1 & 2
- M5) Sierra Pacific Lines
- M6) Airbrush Painting, weathering & decaling plastic cars
- M7) Airbrushing (MR)
- M8) Building model railroad scenery (MR)
- M9) Building reliable model railroad track (MR)
- M10) Weathering model railroads - Malcolm Furlow
- M11) Rocks and basic scenery made easy
- M12) Woodland Scenics - The Clinic
- M13) Great outdoor railways
- M14) Model Railroader presents Scenery made easy
- M15) Wiring for Command Control
- M16) Model Railroads in Action
- M17) Trains 2000 & 2002
- M18) Trains 2003 & Pumpkin Trains
- M19) Model Railroads in Action (1991)

Prototype Railroads - North American

- P1) Warehouse on wheels
- P2) SD40-2's in the Rockies
- P3) Continental Divide, a winters journey
- P4) Travel the BCR & Rails to Romance
- P5) Mile 63.5, Seaton Recovery
- P6) Parade of Steam, Expo
- P7) 6060, freight to Vancouver
- P8) Snowplow, with CN F7's
- P9) VIA F's in the Rockies
- P10) BCR Steam-2860 & 3716
- P11) F Units in winter in Canada
- P12) Diesels of the Union Pacific
- P13) Steam over Sherman
- P14) B.C. Rail

- P15) San Jaun Freight Special 1987
- P16) Pentrex Preveiw, Vol 1 & 2
- P17) This is my railroad - SP 1947 steam
- P18) This is my railroad - SP 1950 diesel
- P19) The Super Chief
- P20) Canadian Double Header Steam
- P21) Colorado's Narrow Gauge Railroads
- P22) Southern Pacific - 1941
- P23) From Stump to Ship
- P24) The Gold Rush Line (WP&Y)
- P25) Running a steam locomotive
- P26) Challenge - the story of the Rogers Pass (2)
- P27) Trains Remembered - Vol 1
- P28) Trains Remembered - Vol 2
- P29) Trains Remembered - Vol 3
- P30) Rocky Mountain Steam Power-6060,2860,&3716
- P31) Cotton Belt 819
- P32) Echoes in the Gatineau - 1201
- P33) False Creek Steam Sawmill
- P34) Cass Scenic Railroad
- P35) Last Train across Canada
- P36) Coquihalia by rail, Garibaldi climb, Vancouver waterfront
- P37) Shays, lumbering & more
- P38) Sacramento Railfare 1991
- P39) Canfor's Englewood Railway
- P40) Around the Horn KVR (2)
- P41) CP Rogers, Last Pushers
- P42) Gears in the Woods
- P43) The Complete Westside Story
- P44) X2000, High Speed for America
- P45) Saluda 611 - Deux
- P46) Trains magazine on location, Cajon Pass
- P47) The Best of the West
- P48) The Steam Locomotive
- P49) The Railway Story
- P50) Livingston Rebuild Center
- P51) Better Way for the Santa Fe
- P52) Phantom Express
- P53) Evoltion of the Air Brake
- P54) Opening a New Frontier
- P56) The Railroad Signal
- P56) Rolling the Freight
- P57) The Broadway Limited
- P58) Trains Magazine presents To-days EMD Diesels
- P59) Cumbres & Toltec 1996
- P60) Tour of the M1000
- P61) Southern Pacifics Shasta Division
- P62) The Wisconsin Central
- P63) The rails on Vancouver Island
- P64) Great American Train Rides Vol 1 & 2
- P65) East Kentucky Coal
- P66) From Sea to Sky (BCR)
- P67) Canada's Canyon Route
- P68) CN/CP Steam on the Move 1959
- P69) Triple Heading to the Spiral Tunnels
- P70) The Final Chapter CP steam in Ontario

Prototype Railroads World

- W1) The Other Poland
- W2) The Slow Train to Olimpia
- W3) Journey to the Land Beyond the Mountains
- W4) SL (Japan)
- W5) Steam in Britain
- W6) Keightly and Worth Valley Railway
- W7) Festiniog Railway
- W8) Trains around Britain
- W9) Raiway Wonders of the World
- W10) Steam to the Border (E. Germany)

DVD's

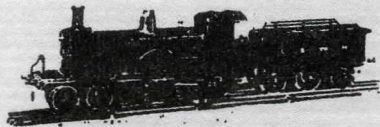
Model

Prototype

- DP1) World Class Trains - The Royal Canadian Pacific
- DP2) World Class Trains - The Rocky Mountaineer
- DP3) World Class Trains - The American Orient Express

KELLY'S KABOOSE

Kamloops Craft & Antique Mall



*Model Railways, RR Books, Videos,
Old Toy Trains, Railroadiana, Antiques*

Brian & Wendy Kelly
377-8510 or 374-8507

634 Victoria Street
Kamloops, BC V2C 2B4

NEW MEMBERS

We would like to welcome aboard the following new members to the 7th Division of the PNR.

Glenn Morgan Delta, BC

NMRA Websites

- 7th Division <http://www3.telus.net/rlink/7division/>
- PNR <http://www.infoharvest.ca/nmra/pnr/>
- NMRA <http://www.nmra.org>
- NMRA Canada <http://www.nmracanada.ca>

Questions?????

Please feel free to contact any of the members if you have questions, comments, suggestions or concerns. The strength of any organization is with it's members! DIRECT YOUR MODELING QUESTIONS to our 7th Division Member Aid Chairman, Bob Gardner, MMR, Voice: (250) 832 9883, Fax: (250) 832-0681, Email: rvongard@jetstream.net

The National Model Railroad Association (Canada) is a separately incorporated section of the National Model Railroad Association Inc. headquarters in Chattanooga, TN. NMRA (Canada) is presently a non-profit organization dedicated to preserving our railroad heritage through the promotion of model railroading and by promoting and recognizing craftsmanship and service to others within the hobby.

Member Aid

Bob Gardner, MMR

Please remember that "aid" is available for your modeling problems, so just give me a call or a note, or e-mail me in care of Editor Eric. In the meantime here are some thoughts of my own.

Mounting Certificates

Rather than placing your Achievement (and other) certificates in frames, here is an easy method of mounting them to make an attractive display on your "ego wall".

- * Cut a piece of 1/4 inch plywood about 1 inch larger all around than you certificate.
- With a propane torch held a few inches away, scorch the plywood. this gives a two-tone effect enhancing the grain.
- Place a sheet of white paper under the certificate and seal all around the edges with white glue.
- Apply 1/8 inch gold striping tape, available at craft stores, all around.
- Apply masking tape around the edge of the plywood, leaving the tape edge standing up to form a dam all around.
- mix up some Enviro-Tex or similar casting resin in a Dixie cup and pour over the certificate. The depth should be just enough to cover the board about 1/16 inch.
- Cover the board with cardboard supported an inch or so above the resin to prevent dust from settling on to the sur face.
- When the resin has set up remove the tape, file off any "flash", and add a hanger to the back.

I think you will like the new look of your well-earned certificate. More tips next time.

Assistant Superintendent

Don Forsyth

CALL FOR NOMINATIONS

For the 7th Division positions of:

Secretary Treasurer Director at Large

Should you wish to run for, or nominate a person for these positions, kindly submit the name along with current NMRA & PNR membership **numbers to Don Forsyth by September 15, 06,**

Submissions may be made by letter or e-mail:

7th Division Nominations

Don Forsyth

2022 Cedar Crescent
Courtenay, B.C. V9N 3B6

or
d.forsyth@terus.net

Positions are for a two year period commencing 1 Jan 07. Ballots will be in the next BB or mailed separately.

PNR 7th Division

Executive

SUPERINTENDENT
 Gary Hazell (250) 835 8628 (Tappen)
 Email: comhaven@jetstream.net

ASSISTANT SUPERINTENDENT
 Don Forsyth (250) 338-4497 (Courtenay)
 Email: d.forsyth@telus.net

MEMBERSHIP COORDINATOR
BULLETIN BOARD PRINTING & DISTRIBUTION
 Gary Hazell (250) 835 8628 (Tappen)
 Email: comhaven@jetstream.net

SECRETARY
 John Green (604) 322 8990 (Vancouver)
 Email: greenjohn1@aol.com

TREASURER
 Mike Barone (250) 367 6134 (Fruitvale)
 Email: mike_barone@telus.net

DIRECTOR AT LARGE
 Brian Clogg (604) 588 2194 (Surrey)
bcclogg@shaw.ca

PAST PRESIDENT
 Scott Calvert (604) 939-1849 (Coquitlam)
scottcalvert@shaw.ca

Appointed Positions

PUBLICITY COORDINATOR
 Dick Sutcliffe (604) 467 4301 (Maple Ridge)
 Email: ras1@uniserve.com

7th DIVISION AP CHAIRMAN
 Ed Warren, MMR (250) 752 4857 (Qualicum Beach)
 Email: e.a.warren@telus.net

LOWER MAINLAND AP REPRESENTATIVE
 Dave Nickerson (604) 929 8057 (North Vancouver)
 Email: d-nickerson@telus.net

VIDEO LIBRARIAN & VANCOUVER ISLAND AP REPRESENTATIVE
 Don Forsyth (250) 338 4497 (Courtenay)
 Email: D.Forsyth@telus.net

BULETIN BOARD EDITOR
 Eric Reynard (250) 832-1382 (Salmon Arm)
ereynard@telus.net

MEMBER AID CHAIRMAN & BULLETIN BOARD PRINTING & DISTRIBUTION
 Bob Gardner, MMR (250) 832 9883 (Salmon Arm)
 Email: rvongard@jetstream.net

ROSS HERIOT GOLDEN SPIKE AWARD COORDINATOR
 Hugh Clarke (250) 545 3900 (Vernon)
 Email: hughclarke@shaw.ca

JACK WORK MEMORIAL TROPHY COORDINATOR
 René Gourley (604) 904 8404 (North Vancouver)
 Email: rene@proto87.org

WEB MASTER
 John Zuk (604) 984 3232 (North Vancouver)
 Email: jazuk@telus.net

Lower Mainland & Fraser Valley Subdivision

Darren Brkich (604) 533 1570 (Langley)
 Email: darren_brkich@shaw.ca

Roy Kelleway (604) 463 4682 (Maple Ridge)
RC_KELLEWAY@telus.net

John Moore (604) 463 7745 (Maple Ridge)
 Email: jegmo@telus.net

Lori & Larry Sebelley (604) 858 5717 (Chilliwack)
 Email: lil:sebelley@shaw.ca

Interior Subdivision

Brian Freemantle (250) 564 2225 (Prince George)
 Email: bfreemantle@shaw.ca

Ken Haun (250) 632 6334 (Kitimat)

Email: kenhaun@telus.net
Vancouver Island Subdivision
 Ted Alexis (250) 595 4070 (Victoria)
 Email: m_talexis@shaw.ca
 Rick Lord (250) 724 4205 (Port Alberni)
 Email: rlord@telus.net
 Ken Rutherford (250) 724 4698 (Port Alberni)
 Email: kj.rutherford@shaw.ca

Western Director: Ray deBlieck (510) 521-9778
 Email: RayDBCS@aol.com
 PNR President: Wil Seaver (208) 983-1772
 Email: Ips8nrr8@valint.net OR pnrprez@hq.nmra.org

JACK WORK MEMORIAL TROPHY

Call for Nominations: Jack Work Memorial Trophy

Jack Work was a true pioneer in the hobby of model railroading. During the 1950's and 60's he shared much of his substantial knowledge and accomplishments with the modelling public through many articles in noted periodicals. After his death in June, 1996, his stainless steel railway whistle was kindly donated to the NMRA PNR 7th Division. The whistle has become the basis of a Divisional Trophy.

The Jack Work Memorial Trophy is presented annually to the 7th division member who best exhibits the qualities that Jack Work displayed, namely: imagination, creativity, innovation, artistry, forward thinking, quality workmanship and the sharing of the results of these qualities with the rest of the hobby. The award may only be received once in a lifetime.

The recipient is selected by a committee composed of the 7th Division Achievement Program (AP) chairperson, Sub-Division AP Chairpersons, and two of the 7th Division Executive members. The selection is made from a list of members that are nominated for the award by the general membership.

The committee will assemble (by e-mail or telephone) and review every nomination and reach consensus on the recipient. The committee members will familiarise themselves with the modelling work of all of the nominees. Photographs and/or video tape may be used to view the modelling when necessary. The Trophy may not be awarded each year if the committee feels that there is no qualified recipient. The AP can be a source of nominations if there is a lack of nominations from the membership.

The 7th Division is very fortunate to have this prestigious award. I'm sure that every modeller would be honoured to receive it.

To nominate someone, please contact Rene Gourley at 604 904 8404, email: rene@proto87.org.

Superintendent's Report

Gary Hazell

I hope that you all have had a great summer and got to do some railfanning or visit one of the train museums in Cranbrook, Duncan, Prince George, Squamish or Revelstoke. I of course live in the Shuswap right across the lake from the CP's Shuswap Sub and there is a constant parade of Trains. I was also able to ride on the 2816 train from Revelstoke to Golden. We were bussed back to the Revelstoke Museum which is now the home of the Revelstoke Model Railroad Club. They have their depiction of the Revelstoke area set up on the mezzanine in the front rotunda overlooking 5468. Although scenery will be starting soon they have most of the track laid and it is operational. By the time you get this the Museum will be holding its annual Railway Days Aug. 18 – 27. This year they are hoping to raise money for an expansion to the Museum and a guaranteed home for the Club.

I attended this year's PNR convention in Wilsonville, Oregon just south of Portland. The 2nd Division put on a great meet with lots of clinics and home layouts. At last count there were 120 some delegates but only 7 from Canada and 5 of us had to be there for the annual PNR BOD (board of directors) meeting. I hope when it is our turn to hold the PNR convention in 2008 that we get a better turn out from our American model railroad friends.

The meeting convened at 0800 hours on Thurs Aug 5th. Along with all the normal reports there was a presentation by the Chilliwack Club to hold the 2008 PNR Convention in the 7th Div in BC. The distribution of the expected proceeds challenged the PNR BOD to reconsider the split that only benefits the local host Club and the PNR, not necessarily the Division. After much discussion on Division lack of funding, a one time agreement was proposed to use a "Patron or Delegate" tax that would be sent to the PNR and the balance could be retained by the Host Club. It will be up to many of us in the 7th Div to work with the host Club and support this effort in order that the 7th could be considered for some of the profit or revenue. The convention agreement (as of Aug 07 date) is not yet ratified by the Club but I hope this can be done soon. The subject of this type of tax is not popular due to the "Head Tax" that was put on our early settlers but I learned that these sorts of "taxes" are used at most cultural and sporting events and in fact the NMRA uses it at their national conventions. Although this is a hidden tax it is certainly the way to tie numbers and/or profits to sponsoring organizations.

Division funding was certainly brought to light. Since the implementation of the LRP (long range plan) PNR funding has changed. They only receive funds from the NMRA for US members only. At this point we do not know what the Canadian NMRA is going to do but I suspect this was not considered in the \$20.00 Canadian membership cost. I have taken this issue to NMRA Canada and asked that the Canadian Divisions be included in the next discussion on cost of membership. Surely we could accept a \$25 or \$30 membership in order that the divisions in Canada get some funding. At present it costs the 7th Div almost \$17 per member to produce and mail this BB 6 times a year never mind anything else. So back to my soap-box, we need more of you to take it by **email** and we need more hobby shops and commercial entities to **advertise**. If you can help with either one, please contact me or anyone on the 7th Div committee

This was the last meeting for PNR president Will Seaver. Will had been at the helm for the last 8 years and is now stepping aside for our newly elected president Kevin Oleson from the 5th Div. There will also be a

change in the Editor of the Switchlist. The Switchlist is expected to take on a new look. At the convention banquet president Will handed out many service awards. I was presented with one.

TIMETABLE

TIMETABLE – 2006

SEP 24, (SUN), VICTORIA BC, NMRA, PNR, 7th Div, Vancouver Island Subdivision, 16th Annual Victoria Model Railway Show, Cedar Hill Recreation Centre, 3220 Cedar Hill Rd. 10am-4pm. Info: - Ted Alexis, (250) 595-4070.

SEP 2-3, METALINE FALLS WA, North Pend Oreille Valley Lions Labor Day Weekend Train Ride to Ione & return, 11am, 1pm, 3pm. Info: - (509) 442-5466, www.povn.com/npovlions/

SEP 8-17, SPOKANE WA, Inland Empire Railway Historical Society, operating telegraph display, operation lifesaver display, train rides, museum train open, in conjunction with the Spokane Interstate Fair. Broadway Ave & Havana St. Info: - ierhs@yahoo.com, www.ierhs.50megs.com.

SEP 16-17, EDMONTON AB, GETS, Great Edmonton Train Show, Mayfield Inn Trade Centre, 16615 – 109th Ave. 10am-5pm. Info: - John Patrie, (780) 478-3650, john@patrie.ca.

SEP 15-17, (FRI-SUN), SALMON ARM BC, Salmon Arm Model Railroaders 2005 Corn Roast and Campout. Pierre's Point Campground-adjacent to CP main line. Info: - Gary Hazell, (250) 835-8628, comhaven@jetstream.net.

SEP 17, (SUN), MISSOULA MT, 27th Missoula Model Railroad Club Show and Swap Meet. Big Sky High School, South Ave. 10am-4pm. Info: Mike or Elaine Brown, MMRC Show, 622 West Artemos, Missoula MT 59803, (406) 543-6123.

SEP 30, (SAT), PEACHLAND BC, 5th Annual Peachland Model Train Show, Beach Ave 10am-4pm. Info: - (250) 767-3441.

SEP 30-OCT 1, OCT 7-8, 14-15, IONE WA, North Pend Oreille Valley I Autumn Colors Train Rides to Metaline Falls & return, 11am, 1pm, 3pm. Info: - (509) 442-5466, www.povn.com/npovlions/.

OCT 7-9, ESSEX MT, 25th Annual Alta/Mont Weekend, Izaak Walton Inn. Info: - (406) 888-5700, stay@izaakwaltoninn.com, www.izaakwaltoninn.com.

OCT 14-15, CHILLIWACK BC, Mount Cheam Lions Club Model Railway & Hobby Show, Heritage Park, 44140 Luckakuck Way. Sat 9am-5pm. Sun 10am-4pm. Info: James Hill, (604) 824-1757, gdee@telus.net.

OCT 14-15, EDMONTON AB, Edmonton Model Railroad Association Open House, at the Freight Shed, Fort Edmonton Park, 10am-5pm. Info: - www.EMRAonline.ca.

OCT 14-15, FIRCREST WA, N-Track Northwest 19, N Scale Show & Swap Meet, Fircrest Recreation Center, 555 Contra Costa, Sat 10am-5pm, Sun 11am-4pm. Info: - Walt Huston, 1210 141st St E. Tacoma 98445, (253) 535-8787, walthuston@earthlink.net.

OCT 14-15, IDAHO FALLS ID, Eagle Rock Railroad Historical Society Rail Show. Idaho Falls Recreation Center, 520 Memorial Dr. Sat 9am-5pm, Sun 10am-5pm. Info: - David Shaw, Eagle Rock Railroad Historical Society, PO Box 2685 Idaho Falls ID 83403, (208) 522-3125, errhsi@ida.net, www.ida.net/org/errhsi/.

OCT 14-15, REGINA SK, 4th Annual Regina Model Railroad Show sponsored by the Regina Model Railroad Club, Cochran High School, 1069 14th Ave E. 10am-5pm. Info: -Jim McCowan, (306) 545-6619 jmccowan@accesscomm.ca or Gordon Down, (306) 586-1156, gord@equinoxfinancial.com.

OCT 15, (SUN), CALGARY AB, Calgary Model Railway Society, (CMRS), Fall Mini-Meet, Glenmore Inn, 2720 Glenmore Trail, SE, 9:30am-3:30pm. Info: - www.calgarymodelrailway.org.

OCT 15, (SUN), SPOKANE WA, Spokane Railroad Show. Spokane Community College, Lair Student Activities Building, Mission & Greene St. 10am-3:30pm. Info: - IERHS/Train Show, P.O. Box 5334, Spokane WA 99205-0334, (509) 535-7186 ierhs@yahoo.com,

OCT 21-22, IONE WA, North Pend Oreille Valley Lions Club, The Great Pump Rides to Metaline Falls & return, 11am, 1pm, 3pm. Info: - (509) 442-5466, www.povn.com/npovlions/

OCT 21-22, RAVENSDALE WA, 9th Annual Maple Valley Operating Model Train Show, 10am-5pm. Grace Hansen Community Center, 27132 Ravensdale Way. Info: - Steve Hiester, hies_skel@hotmail.com, www.freewebs.com/mytrainshow/.

OCT 28, (SAT), PORTLAND OR, First Annual All Brass Model Train Show, Inn Airport Convention Center, E. of I-205 on Airport Way, 10am-3pm. Info: - L. Laskey, (503) 283-6040, Heather Clark, (541)-401-1548, www.wsor.com.

NOV 4-5, CORVALLIS OR, 3rd Annual "Worlds Greatest Hobby - Intro to Model Railroading", Corvallis/Benton County Public Library, 645 NW Monroe Ave. Sat 10am-6pm, Sun noon-6pm. Info: - Patrick Sloma, (541) 760-5245, p.sloma@comcast.net, www.csme1959.org.

NOV 10-13, BURNABY BC, TRAINS 2006, 24th Annual 7th Div Fall Meet, Cameron Recreation Center, 9523 Cameron St. Trains Meet Registrar, Kathy, P.O. Box 52224, N. Vancouver BC V7J 3V5, (6040 987-4237, Trains-2006-reg@telus.net, Info: - Dick, (604) 467-4301, www.bctrains.org.

NOV 11-12, BURNABY BC, TRAINS 2006, 24th Annual Public Show, Cameron Recreation Center, 9523 Cameron St. 11am-4pm. Info: - Trains Show Registrar, Bill, P.O. Box 52224, North Vancouver BC V7J 3V5, (604) 987-4237, Trains-2006-reg@telus.net, www.bctrains.org.

NOV 11, (SAT), KENT WA, 27th Boeing Employees' Model Railroad Club Annual Swap Meet, Kent Commons, 525 4th Ave. N, (corner w/ James), 9:30am-4pm. Info: - swapmeet@bemrrc.com www.bemrrc.com.

NOV 18-19, PUYALLUP WA, Great Train Expo, Western Washington Fairgrounds, 9th & Meridian, 10am-4pm. Info: - www.greattrainexpo.com.

NOV 25-26, DEC 2-3, ADAIR VILLAGE OR, Corvallis Society of Model Engineers Open House, Adair Village Clubhouse, 7155 Vandenburg Ave, 10am-5pm. Info: - Patrick Sloma, (541) 760-5245, p.sloma@comcast.net, www.csme1959.org.

TIMETABLE - 2007

FEB 11, (SUN), VANCOUVER BC, Mount Pleasant Lions Model Railroad Show, Mount Pleasant Community Centre, 3161 Ontario St. 10am-3pm. Info: - Alex, (604) 875-1837.

MAR 18, (SUN), PULLMAN WA, 11th Annual Palouse Empire Railroad Show & Swap Meet. Beasley Performing Arts Coliseum, WSU Campus, 10am-3pm. Info: - Ken Vogel NW 237 Sunrise Dr, Pullman WA 99163, (509) 332-4916, or Noel Randall, 805 Panorama, Moscow ID 83843, (208) 882-3773.

APR 6-7, PRINCE GEORGE BC, 2007 Crossroads Express, 7th Div, 2007 Spring Meet, Prince George Civic Centre, 808 Civics Plaza. Info:

APR 14-15, EUGENE OR, 19th Annual Willamette Cascade Model Railroad Club Train Show and Swap Meet. Lane County Fairgrounds, 796 W 13th Ave, Expo Hall, South side of the complex. Sat 10am-5pm, Sun 10am-4pm. Info: - Lee or Diane Temple, (541) 954-4914, (541) 225-7394, ttanddt@ram.com.

JUL 22-28, DETROIT MI, GREAT LAKES EXPRESS., NMRA National Convention, Sponsored by the North Central Region. Detroit Marriot at the Renaissance Center. Info: - www.nmra.org/2007/.

JUL 27-28, DETROIT MI, NATIONAL TRAIN SHOW. Cobo Center. Info: - www.nmra.org/2007/.

To add your activities to the Timetable contact **Hugh Mackenzie at, (208) 777-8024, hcmac@adelphia.net**. For more up to date information check www.nmra.org. Go to Regions and Divisions and to the PNR home page.

Peachland Model Railway Club & Okanagan Garden Railways

Present the 2006 Annual
**PEACHLAND MODEL
& HOBBY SHOW**

SATURDAY SEPTEMBER 30th 10am - 4pm
at Peachland Community Center
on Beach Avenue

*** ADMISSION \$2 ***

*** FREE PARKING * LOTS OF DOOR PRIZES**
*** REFRESHMENTS ON SITE**

CONTACT PEACHLAND MUSEUM FOR MORE DETAILS
& REGISTRATION FOR VENDORS, CLUBS & LAYOUTS
250-767-3441 or E-MAIL Don Wilson dw@idmail.com



TRAINS G-HO-N
Steam-Diesel
Swap & Shop Vendors
Model Train Layouts



AIRPLANES
Modern Aircraft-Old warbirds
Flying & Static Models



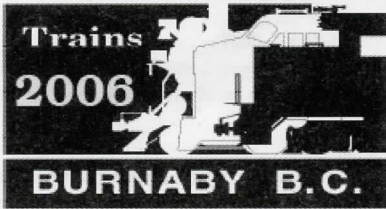
STAMPS
From the Great War to the World



BOATS
Battleships & Sail Boats
Kits-Custom Built-Radio Control



DOLL HOUSES
Miniature Worlds Come to Life
Beautiful Handmade Creations
Home Tours



Burnaby, B.C., Canada, Saturday and Sunday, November 11 & 12 2006, will be the location of the 24th annual TRAINS show. The 7th Division, Pacific Northwest Region, National Model Railroad Association, is

once again sanctioning the show and a meet, which will take place from Friday, Nov. 10, to Monday, Nov. 13th.

TRAINS 2006 will be held in the 2045 sq. metre Cameron Recreation Center athletic hall plus a racquetball court and the multipurpose rooms. All this space makes this the largest annual model railway show in British Columbia, Last year over 3200 public and registrants attended. The public show will feature modular and sectional layouts in N, HO, S, O, G and possibly 1.5" scales. Displays of models in North American and overseas prototypes; Tinplate; Collectibles; as well as swap tables; commercial sales; videos; demonstrations; Kids Zone; WGH beginner clinics; and expert advice on the hobby.

Saturday and Sunday 11 AM to 4 PM. Adults \$6, senior/student/NMRA \$3, family \$15.

The purpose of this show is to raise the public awareness of this greatest hobby of model railroading.

The meet will include: On Friday, for the pre-registrants a self guided layout tour, and several operation sessions by pre-application.

Set up for the show will start in the early evening and space will also be available for slide/video presentations and socializing.

There will be time Saturday morning to complete setup of displays. Clinics, popular choice, prototype modelers and SIG contests take place all day. Railway videos from the 7th division library will be on view. From 12 noon to 5 pm, the hall will be opened for the first day of the Public Show. In the evening, following time for a no host meal, there will be the traditional bused tour of five excellent layouts.

Sunday's activities from 9 am to 4 pm, will be the second day of the Public Show, with AP judging available for contest entries, as well as two beginners clinics, Kids Zone, and more videos. In the evening, the annual Fall Meet Banquet, with Cosmic Catering's wonderful food, and an after dinner program featuring Mr. Singh Biln of the West Coast Railway Museum. On Saturday & Sunday refreshments will be available from the Center's Seniors' Association, in their lounge and the concession downstairs.

The prototype tour this year's will be the West Coast Railway Museum. at Squamish.

Meet Registrar Kathy, P.O. Box 52224, North Vancouver, B.C. V7J 3V5, 604-987-4237 or

Trains-2006-reg@telus.net. Exhibitor/Vendor Registrar Bill, P.O. Box 52224, North Vancouver, B.C. V7J

3V5, 604-987-4237 or Trains-2006-reg@telus.net,

Meet fare \$16, \$4 refund if NMRA +\$4 refund if a presenter, family member \$5, bused layout tours \$20,

banquet \$28

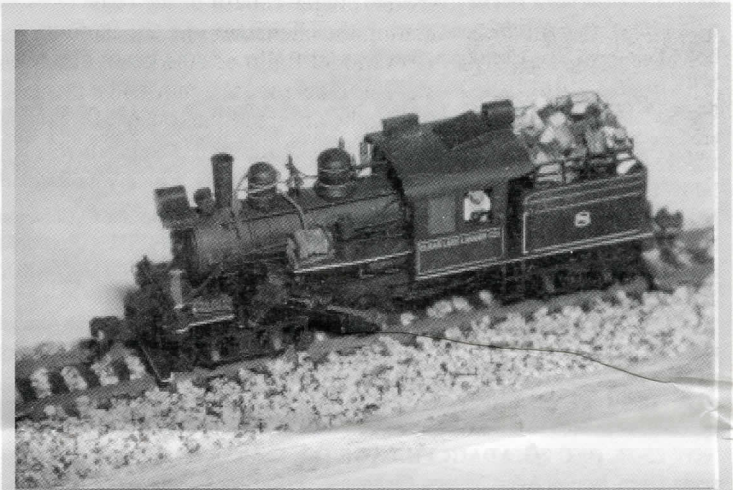
To page 2

Trains is sanctioned by the 7th div, Pacific Northwest Region, National Model Railroad Association

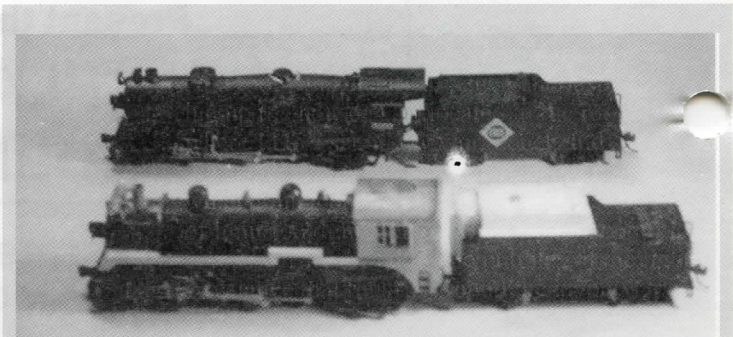
Visit our web site at: <http://www.bctrains.org>

STEAM LOCOMOTIVE MODELLING

-Brian Golds



**Climax Locomotive
First Place-Locomotive
PNR Spring Meet - Vernon**



BLI Mikado Conversion to Canadian Pacific

