

BULLETIN BOARD

Volume 20 Issue 6

Nov/Dec 2006

The Official Publication of the 7th Division, Pacific Northwest Region National Model Railroad Association (Canada)

Victoria Train Show - 2006

Great Turnout for the 2006 Victoria Model Railway Show!

The largest one day event on Vancouver Island continues. The sixteen annual 2006 Victoria Model Railway Show held at the Cedar Hill Recreation Centre recorded an attendance of **2,050** during the one day event. Overall response at the Centre is still positive from both the public and sale vendors.

The crowds came in a steady stream with just under 1,100 before lunch time. Though our attendance is slightly down from last year's attendance, beautiful warm summer weather and other Sunday events in the Victoria area did compete for crowds. Families with children continue to be delighted with the train Show. One of the major attractions is still the Vancouver Island Model Engineers train rides for the kids. The very popular Thomas the tank engine was also busy at The Gangers Double 00 layout and the Toy Train Operating Society Island Members 4'x 8' Lionel train layout and it's proved popular for kids who were allowed to operate the trains. One of the most unusual item for sale was wood finished Murphy bed inside with a N scale fully operation, nicely detailed scenery and operating train. It caught the eye of many the public and modelers. It was really neat.

The big crowds also

brought smiling faces to the commercial and private sellers. I would like to thank the following dealers for providing the hourly door prizes, BC Shavers and Hobbies, Britannia Models, Miniature World, Central Hobbies, Charlie Choo Choos, Creative Hobbycraft, Leisure Time Hobbies, Robert Hopkins of BC Ferries and Victoria Scale Rail.

Donations will be given out to the following supporters of the Show; Times Colonist 1000 Fund, C-Fax Santa's Anonymous and the News Group "Pennies For Presents".

The popular vote contest winners were awarded plaques with a picture of last year's winner N Scale Module "Snow Shed" by Daryl Baxter of the One Track Group.

The popular vote contest winners are as follow:
The Public Choice Best Layout went to HO Scale "Island Pacific Railway" division of Victoria Model Railway Club;
Best Module: Elm Park - O Scale Cascade Pacific Railway;
Best Train: Mark Giles;
Best Locomotive: Mark Giles;
Best Rolling Stock: Darryl Barter;
Best Structure: Ed Warren;
Best Diorama: Ted Alexis;
Best Proto Photo: Dan Rowsell;
Best Model Photo- Lorne Miller.

Congratulations to the winners and participating entries.

NOTICE of ANNUAL GENERAL MEETING.

All members are invited to attend the Annual General meeting of the Seventh Division, Pacific Northwest Region, National Model Railroad Association (CANADA) which will be held on Saturday, November 11, 2006 at 3:00 PM in the Cedar room of the Cameron Recreation Centre, 9523 Cameron Street, Burnaby, BC.

Respectfully submitted by
 John Green
 Secretary Seventh Division, Pacific Northwest Region
 National Model Railroad Association (CANADA)

Inside this Issue

- Victoria Train Show
- AGM Notice
- Ballot
- Spring Meet 2007

In closing and on behalf of the Show Committee I would like to personally thank the various club members for volunteering their time on the admission tables. Thanks to the ladies @ the Ricochet's Café providing the lunches throughout the day. Special thanks to Dave Quissy, helping out on the popular vote contest and Mark Giles, floor planner. Also thanks to Peter Thornton-Trump our marketing whiz and public relations, and finally Ted Alexis. So all aboard for next year's **seventeen annual Victoria Model Train Show Sunday September 23rd, 2007.**

David Tomljenovich

Trains 2006 Layout Tours

TRAINS 2006 LAYOUT DESCRIPTIONS

Friday Evening Self Guided Layout Tours. Maps can be collected with your registration materials at the Cameron Recreation Center on Friday Evening November 10, 2006

BIRCH RIVER AND COAST RAILROAD

This HO Scale line represents the Canadian National Railway on the Prairies circa 1950-1960s, A pioneer railroad taken over by the CN but still using the original name This layout occupies a sixteen by seventeen foot room.

CANADIAN PACIFIC RAILWAY - Boundary & Phoenix Subs

This HO scale pike which is based on the now abandoned line between Nelson and Midway, with a branch to the legendary mine at Phoenix. This layout is set in the 1960's in the Southern Interior of British Columbia. Out of room staging yards and a Great Northern branch line add a lot of operating interest.

COQUIHALLA VALLEY RAILWAY

This HO Scale layout represents the Canadian Pacific Kettle Valley Division - Coquihalla Sub Division. Many scenes are based on prototype locations on the long abandoned line occupying a thirteen by thirty-nine foot room, this layout is operated by conventional cab control - CCC.

SEYMOUR VALLEY LOGGING RAILWAY

This small compact and highly detailed HO scale logging layout is a perpetual favorite, with a working railway incline, and a burning forest fire to keep guests warm and toasty. This layout features a wealth of details while trains are now controlled by DCC.

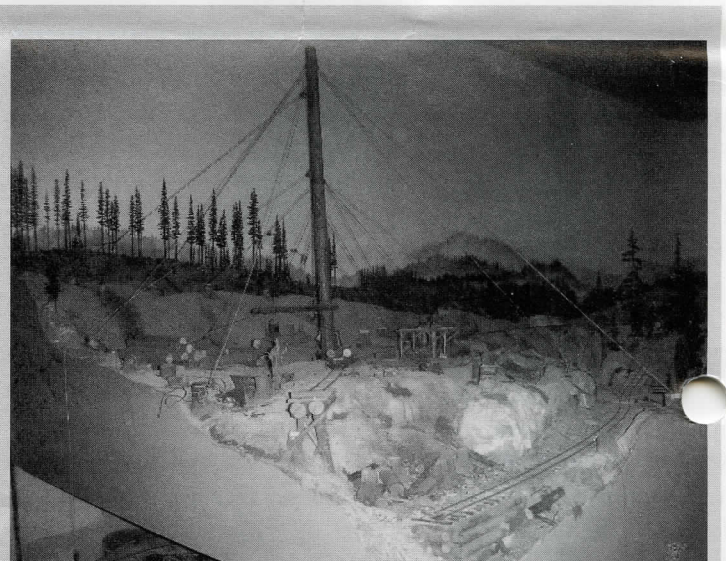
More Layouts may be added,

TRAINS 2006 LAYOUT ESCORTED TOURS on Saturday Evening: Buses are scheduled to arrive at 6:00 PM for a 6:15 departure. The anticipated time of return to the Cameron Recreation centre is expected around 11:00 PM.

This year's tour will visit:

CEDAR RIDGE TIE AND TIMBER COMPANY

This freelance O scale pike occupies a ten by twenty foot area. It represents a mid 1930's narrow gauge logging operation located on the West Coast of Vancouver Island. The steam locomotives are sound equipped. This three foot gauge line portrays a woods bush-loading to sawmill operation. Many of the bridges on this line are based on prototypes from various locals. All the buildings, bridges, and rolling stock are built from scratch.



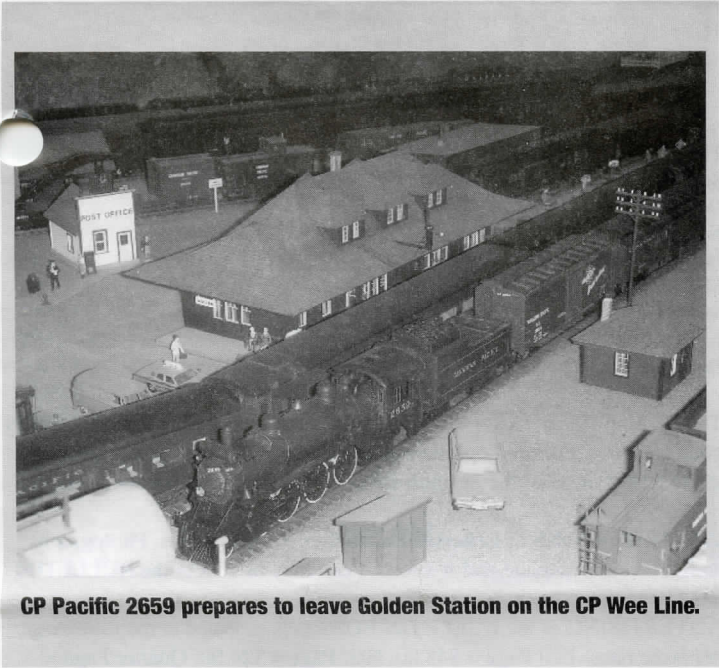
At the top of Cedar Ridge, the crew of the Spar Tree wait for empty log bunks on the On3 Cedar Ridge Tie & Timber Co.

SANTA FE - Cloverdale Division

This freelance HO scale layout represents a fictitious division of the Santa Fe Railroad set in the mid 1970's. Trains are controlled using DCC. This layout occupies an interesting shaped series of rooms in a space approximately twenty by twenty four feet.

CP WEE LINE

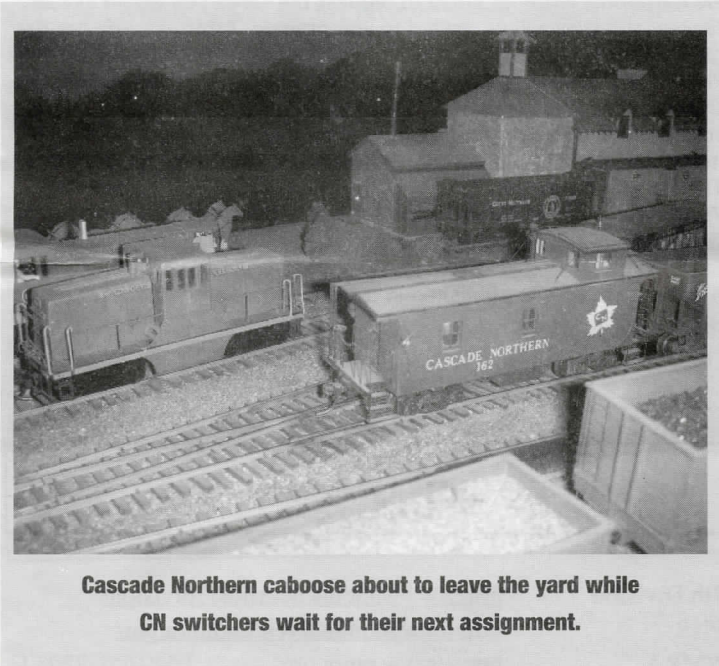
This HO scale layout features late steam - early diesel era Canadian Pacific Railway Steam Locomotives, All of the railway structures are scratch built based on CP prototype. One of the featured trains on this pike is a model of the Canadian Pacific Streamliner "The Canadian" in classic maroon and gray livery. This layout makes a most innovative use of a ten by seventeen foot dining area.



CP Pacific 2659 prepares to leave Golden Station on the CP Wee Line.

CASCADE NORTHERN

This HO Scale layout features hand laid track in the visible areas, There are narrow gauge branch lines which feed into this standard gauge line. Many of the locomotives and rolling stock are based on Canadian National equipment. This eleven by fifteen foot layout features a large number of scratch built structures. The owner has also developed a display of over one hundred scratch built snow plows mostly based on North American prototypes.



Cascade Northern caboose about to leave the yard while CN switchers wait for their next assignment.

Interior Spring Meet - 2007

The Interior Spring Meet is coming to Prince George! The modelers of Prince George and the Prince George Railway and Forestry Museum together are preparing to welcome everyone to Crossroads Express 2007, April 6, 7 & 8, 2007. So far we have the basics set for what we believe will be an excellent weekend. The Salmon Arm Model Railway Association and the North Okanagan Model Railroad Association have both agreed to bring their portable layouts for display. Major vendors who have committed to attending are Central Hobbies, Kelly's Kaboose and Creative Zone of Terrace. There will be a popular vote model contest and Achievement Program judging will be available. The public show will be open from Noon to 5 pm Saturday, April 7, and Noon to 4 pm Sunday, April 8, at the Prince George Civic Centre.

The weekend will begin Friday, April 6, with a beer and burger/wine and cheese evening at the Railway Museum. The modelers group of the museum will have their modular layout open for viewing in "The Sandbox". The Sandbox is the former CN Rail Maintenance of Way shop and is where the museum restores its rolling stock. It's where we go to play.

Setup will begin at 7 am Saturday morning at the Civic Centre in downtown Prince George. There will be over 6000 sq. ft. of display area available. For those not involved with setup, several layouts will be available for a self-guided tour. The tour will be repeated Sunday morning before the public show.

At this writing, early October, there are several details to be settled. We are still looking for clinicians. A clinic on BC Rail or CNR would be appreciated. The prototype tour is currently listed as a mystery, though we have something particular in mind.

There are several hotels and restaurants within walking distance of the Civic Centre with the Coast Inn of the North being the closest, right across the parking lot. There is also a Days Inn, a Travel Lodge, a Best Western and a Ramada. There are many others at greater distances. Further details on both the Meet and accommodations, and registration forms, will be in the next Bulletin Board.

NEW MEMBERS

We would like to welcome aboard the following new members to the 7th Division of the PNR.

- | | |
|----------------|---------------|
| Hadrian Evans | Vernon, BC |
| Robert Johnson | Cranbrook, BC |
| Wanda Parsons | Chase, BC |

NMRA/PNR RENEWAL

All MEMBERSHIP INQUIRIES including NEW MEMBERSHIPS must be forwarded to the Membership Coordinator: Don Hillman, registrar@nmracanada.ca Registrar, NMRA Canada, 69 Schroder Cres, Guelph ON N1E 7B4

To renew your NMRA and PNR/7th Division membership contact Don Hillman at registrar@nmracanada.ca Registrar, NMRA Canada, 69 Schroder Cres, Guelph ON N1E 7B4

The 7th division PNR NMRA is updating our list of model railroad clubs and groups in our division. Please contact me with the following information if you want your group to be listed.

Group name; Group contact name;
 Building layout? Round robin group? Looking for members?
 E-Mail &/or address &/or phone :Brian Clogg bcclogg@shaw.ca

15440-99a AVE, Surrey B.C., V3 R 9H4

Editor's Desk

Eric Reynard

Another full Bulletin! This job is sure easier when people send in material. Thanks to all the readers who responded with articles for this issue. I encourage any and all to share their work with the rest of us.

I also encourage you to vote. The included ballot is for three positions, Treasurer, Secretary and Director at Large. Vote for one of the listed candidates or write in one of your own. These people will help shape the direction of your Division. It is always important to vote.

September marks the return to work at our club as we take the summer off every year. There is a lot of enthusiasm this year in moving the layout forward and improving one what we have, There will be some interesting additions including the installation of a sound system for the operating lift bridge. This is created from recordings made on the lift bridge at the Second Narrows in Vancouver and they sound great - sirens, latches clanking and electric motors whirring. The boards are cerated and now it is a matter of fitting speakers in appropriate locations, not an easy matter on our modular layout.

One of the other major projects involves bringing the wiring up to "code", a project made necessary by the increasing level of animation on the layout and wiring decisions made in a big hurry. This should be a terrific exercise in frustration but a great opportunity to learn the intricacies of layout wiring. As I have the view that electricity is magic I will be in there up to my elbows to see if I can get some inkling of what goes on. As wiring is coming up soon on my layout a little practical knowledge just might be useful.

Looking forward to a great fall and winter of modelling. Now is a great time to write that article on your layout. (Have a mentioned that before?)

-Editor

Bulletin Board

The BULLETIN BOARD is published six times per year as follows:

Submission	Mailing	
Deadline	Date	Month
November 15th	December 15th	Jan/Feb
January 15th	February 15th	Mar/Apr
March 15th	April 15th	May/Jun
May 15th	June 15th	Jul/Aug
July 15th	August 15th	Sep/Oct
September 15th	October 15th	Nov/Dec

The BULLETIN BOARD is distributed to all Seventh Division members in good standing. Editorial opinions and those stated in articles do not necessarily reflect those of the Seventh Division Standing Committee.

CONTRIBUTIONS of Letters, Articles, Event News, Plans, Photographs and Art are encouraged and welcomed and may be sent to the BULLETIN BOARD Editor:

ADVERTISING in the BULLETIN BOARD is accepted at the following per issue rates: Full Page = \$48.00, Half Page = \$24.00, Quarter Page = \$12.00, Business Card = \$6.00,

Artwork should be supplied in the appropriate size. There may be an additional charge to complete artwork that is not camera ready. Please mail your artwork and remittance, payable to the "7th Division PNR/NMRA," to the Editor's address listed above.

7th Division Video Library

Please phone, write, or Email to request the tapes you would like to borrow and they will be mailed to you prepaid. After use, you are required to mail them back 'Proof of Delivery with \$100 insurance.' Please keep your return postage receipt for tracing purposes in case the tapes are lost in the mail. Check your membership expiry date on your Bulletin Board mailing label. If it has expired, please renew it now using the instructions above before requesting to borrow tapes. The library address is:

7th Division Video Library, c/o Don Forsyth, 2022 Cedar Crescent, Courtenay, BC V9N 3B6, phone (250) 338 4497

Email: D.Forsyth@telus.net

A full list of tapes is published in the March and September issues of the BULLETIN BOARD

NMRA Websites

7th Division	http://www3.telus.net/rlink/7division/
PNR	http://www.infoharvest.ca/nmra/pnr/
NMRA	http://www.nmra.org
NMRA Canada	http://www.nmracanada.ca

Questions?????

Feel free to contact any of the members if you have questions, comments, suggestions or concerns. The strength of any organization is with it's members! DIRECT YOUR MODELING QUESTIONS to our 7th Division Member Aid Chairman, Bob Gardner, MMR, Voice: (250) 832 9883, Fax: (250) 832-0681, Email: rvongard@jetstream.net

The National Model Railroad Association (Canada) is a separately incorporated section of the National Model Railroad Association Inc. headquarters in Chattanooga, TN. NMRA (Canada) is presently a non-profit organization dedicated to preserving our railroad heritage through the promotion of model railroading and by promoting and recognizing craftsmanship and service to others within the hobby.

Member Aid

Bob Gardner, MMR

We have had zero Members Aid enquiries over the last few month, but hopefully now that fall is here we can again try to solve some modeling problems. Please drop me a note, fax, or phone call, or e-mail me c/o Editor Eric,

In the meantime:

Here's a personal plea for "aid" from your co-ordinator. I recently took some tools down to the club for a small project and on the way home the unthinkable happened. My bottle of fast-setting ACC (or CA) leaked all over my favorite pair of modeling pliers. These are 30-year-old 4" Swedish forged-joint duck-billed pliers with extremely close tolerances. I managed to scrape off the external cement, but capillary action drew the liquid into the joint, seizing it.

Do any readers know of a way to restore these pliers? Heat? Solvent? Ultrasonic cleaning? Aid would be appreciated. E-mail editor Eric or drop me a note.

More tips next time.

PNR 7th Division

Executive

- SUPERINTENDENT
Gary Hazell (250) 835 8628 (Tappen)
Email: comhaven@jetstream.net
- INSTANT SUPERINTENDENT
Don Forsyth (250) 338-4497 (Courtenay)
Email: d.forsyth@telus.net
- MEMBERSHIP COORDINATOR

BULLETIN BOARD PRINTING & DISTRIBUTION

- Gary Hazell (250) 835 8628 (Tappen)
Email: comhaven@jetstream.net
- SECRETARY
John Green (604) 322 8990 (Vancouver)
Email: greenjohn1@aol.com
- TREASURER
Mike Barone (250) 367 6134 (Fruitvale)
Email: mike_barone@telus.net
- DIRECTOR AT LARGE
Brian Clogg (604) 588 2194 (Surrey)
bcclogg@shaw.ca
- PAST PRESIDENT
Scott Calvert (604) 939-1849 (Coquitlam)
scottcalvert@shaw.ca

Appointed Positions

- PUBLICITY COORDINATOR
Dick Sutcliffe (604) 467 4301 (Maple Ridge)
Email: ras1@uniserve.com
- 7th DIVISION AP CHAIRMAN
Ed Warren, MMR (250) 752 4857 (Qualicum Beach)
Email: e.a.warren@telus.net
- LOWER MAINLAND AP REPRESENTATIVE
Dave Nickerson (604) 929 8057 (North Vancouver)
Email: d-nickerson@telus.net
- VIDEO LIBRARIAN & VANCOUVER ISLAND AP REPRESENTATIVE
Don Forsyth (250) 338 4497 (Courtenay)
Email: D.Forsyth@telus.net
- BULETIN BOARD EDITOR
Eric Reynard (250) 832-1382 (Salmon Arm)
ereynard@telus.net
- MEMBER AID CHAIRMAN & BULLETIN BOARD PRINTING & DISTRIBUTION
Bob Gardner, MMR (250) 832 9883 (Salmon Arm)
Email: rvongard@jetstream.net
- ROSS HERIOT GOLDEN SPIKE AWARD COORDINATOR
Hugh Clarke (250) 545 3900 (Vernon)
Email: hughclarke@shaw.ca
- JACK WORK MEMORIAL TROPHY COORDINATOR
René Gourley (604) 904 8404 (North Vancouver)
Email: rene@proto87.org
- WEB MASTER
John Zuk (604) 984 3232 (North Vancouver)
Email: jazuk@telus.net

Lower Mainland & Fraser Valley Subdivision

- Darren Brkich (604) 533 1570 (Langley)
Email: darren_brkich@shaw.ca
- Roy Kelleway (604) 463 4682 (Maple Ridge)
RC_KELLEWAY@telus.net
- John Moore (604) 463 7745 (Maple Ridge)
Email: jegmo@telus.net
- Lori & Larry Sebelley (604) 858 5717 (Chilliwack)
Email: sebelley@shaw.ca

Interior Subdivision

- Brian Freemantle (250) 564 2225 (Prince George)
Email: bfreemantle@shaw.ca
- Ken Haun (250) 632 6334 (Kitimat)
Email: kenhaun@telus.net

Vancouver Island Subdivision

- Ted Alexis (250) 595 4070 (Victoria)
Email: m_talexis@shaw.ca
- Rick Lord (250) 724 4205 (Port Alberni)
Email: rb lord@telus.net
- Ken Rutherford (250) 724 4698 (Port Alberni)
Email: kj.rutherford@shaw.ca

- Western Director: Ray deBlicke (510) 521-9778
Email: RayDBCS@aol.com
- PNR President: Wil Seaver (208) 983-1772
Email: 1ps8nrr8@valint.net OR pnrprez@hq.nmra.org

There is not much for me to report but there are plenty of reports and activities in the BB. You will find ballot information as well.

Donna and I along with a group of friends sailed on the Dawn Princess to San Francisco where we rode the cable cars (2 different routes), streetcars, buses, and ferry boat. Then Amtrak to Denver, flew to Seattle, bussed to Vancouver and drove back to Salmon Arm. We truly did Planes, Trains, Automobiles and Boats. It was a

Superintendent's Report

Gary Hazell

great 12 days of great weather and it fulfilled a wish by Donna to do a short trip after her treatment for a re-occurrence of Breast Cancer.

Our Salmon Arm Club has been busy installing a new work bench and cupboards in our Club room. We have also been up-dating the railroad, changing many trees and adding sound to both locomotives and some stationary affects.

I stated in my last report that "At this point we do not know what the Canadian NMRA is going to do but I suspect this was not considered in the \$20.00 Canadian membership cost." Well now I know, NMRA Canada in fact did and does send money twice a year to the PNR and at the mid year PNR BOD meeting in Jan/Feb. 2007, I suspect we will be discussing a formula for Division funding.

I hope you are back doing some model railroading as the nights are getting longer and outside activities are coming to an end. I am looking forward to Trains this year and hoping there will be a report on the 2007 CARM meet in Victoria, the Spring Meet in Prince George, and also the 2008 PNR meet in Chilliwack. We have a couple of busy years ahead and I am sure these meets will need volunteers so please help where you can.

Hope to see a lot of you at Trains in November.

AP Report

Ed Warren

Both Don Forsyth and I attended the Victoria Train show held at the Cedar Hill recreation centre on September 24th. It was a beautiful day and apparently 2050 people came to the show. There were many great models on the display table, but no requests for AP judging. The train show organizers always award nice plaques to the popular choice winners in structure, rolling stock locomotive and train. I think that encourages people to bring models. Below is the O scale model of the Victoria sandhouse that I brought along. It was made from stripwood and Mt Albert siding. It depicts the structure as it was in the 70's, after the sand spout was removed and replaced with a hose for servicing the diesels based in Victoria. I was

fortunate to have a few photos that I had taken in 1979, and to get plans from Dave Manzer.

In my ongoing effort to counter the growing trend by modellers of buying everything readymade, I did my usual clinic on scratch-building trees. It is a rewarding clinic, as it always gathers an appreciative crowd. The wives and children being dragged around the show by railway enthusiast Dads are happy to see something crafty that interests them.

I demonstrate the construction of a modified Jack Work style of tree, using wild spirea (hardhack or Spirea Douglasi) that is plentiful in wetlands locally. It makes a very convincing Douglas fir in any scale, and I take the results home and plant them on my layout. Small clinics like this are a great thing to do at shows. The show organizers and attendees appreciate it. You get some modelling time in, and the time spent goes toward your Author's Certificate



O Scale Sandhouse - Ed Warren

TIMETABLE

TIMETABLE – 2006

NOV 4-5, CORVALLIS OR, 3rd Annual "Worlds Greatest Hobby – Intro to Model Railroading", Corvallis/Benton County Public Library, 645 NW Monroe Ave. Sat 10am-6pm, Sun noon-6pm. Info: - Patrick Sloma, (541) 760-5245, p.sloma@comcast.net, www.csme1959.org.

NOV 10-13, BURNABY BC, TRAINS 2006, 24th Annual 7th Div Fall Meet, Cameron Recreation Center, 9523 Cameron St. Trains Meet Registrar, Kathy, P.O. Box 52224, N. Vancouver BC V7J 3V5, (604) 987-4237, Trains-2006-reg@telus.net, Info: - Dick, (604) 467-4301, www.bctrains.org.

NOV 11-12, BURNABY BC, TRAINS 2006, 24th Annual Public Show, Cameron Recreation Center, 9523 Cameron St. 11am-4pm. Info: - Trains Show Registrar Bill, P.O. Box 52224, North Vancouver BC V7J 3V5, (604) 987-4237, Trains-2006-reg@telus.net, www.bctrains.org.

NOV 11, (SAT), KENT WA, 27th Boeing Employees' Model Railroad Club Annual Swap Meet, Kent Commons, 525 4th Ave. N, (corner w/ James), 9:30am-4pm. Info: - swapmeet@bemrrc.com www.bemrrc.com.

NOV 18-19, PUYALLUP WA, Great Train Expo, Western Washington Fairgrounds, 9th & Meridian, 10am-4pm. Info: - www.greattrainexpo.com.

NOV 25-26, DEC 2-3, ADAIR VILLAGE OR, Corvallis Society of Model Engineers Open House, Adair Village Clubhouse, 7155 Vandenburg Ave, 10am-5pm. Info: - Patrick Slroma, (541) 760-5245, p.sloma@comcast.net, www.csme1959.org.

TIMETABLE – 2007

FEB 11, (SUN), VANCOUVER BC, Mount Pleasant Lions Model Railroad Show, Mount Pleasant Community Centre, 3161 Ontario St. 10am-3pm. Info: - Alex, (604) 875-1837.

MAR 18, (SUN), PULLMAN WA, 11th Annual Palouse Empire Railroad Show & Swap Meet. Beasley Performing Arts Coliseum, WSU Campus, 10am-3pm. Info: - Ken Vogel NW 237 Sunrise Dr, Pullman WA 99163, (509) 332-4916, or Noel Randall, 805 Panorama, Moscow ID 83843, (208) 882-3773.

APR 6-7, PRINCE GEORGE BC, 2007 Crossroads Express, 7th Div, 2007 Spring Meet, Prince George Civic Centre, 808 Civics Plaza. Info:

APR 14-15, EUGENE OR, 19th Annual Willamette Cascade Model Railroad Club Train Show and Swap Meet. Lane County Fairgrounds, 796 W 13th Ave, Expo Hall, South side of the complex. Sat 10am-5pm, Sun 10am-4pm. Info: - Lee or Diane Temple, (541) 954-4914, (541) 225-7394, ttanddt@ram.com.

JUL 22-28, DETROIT MI, GREAT LAKES EXPRESS., NMRA National Convention, Sponsored by the North Central Region. Detroit Marriot at the Renaissance Center. Info: - www.nmra.org/2007/.

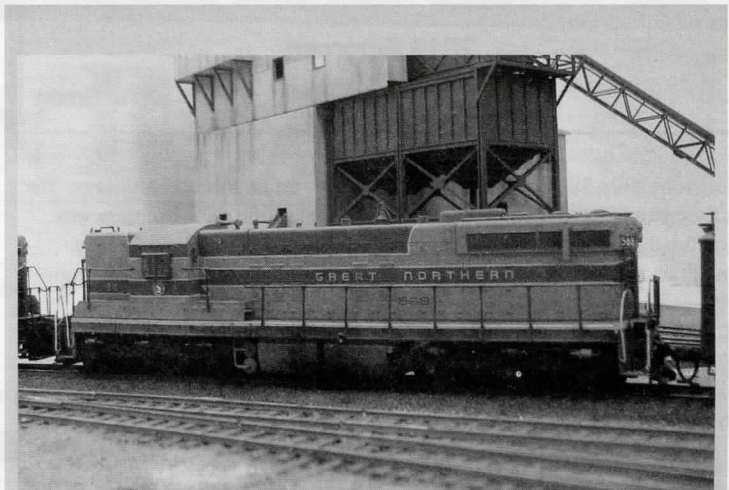
JUL 27-28, DETROIT MI, NATIONAL TRAIN SHOW. Cobo Center. Info: - www.nmra.org/2007/.

To add your activities to the Switchlist Timetable or PNR web page contact the Timetable Editor, Mark Johnson at (780) 436-2480, Mark.Johnson@InfoHarvest.ca For more up to date information check www.nmra.org. Go to Regions and Divisions and to the PNR home page.

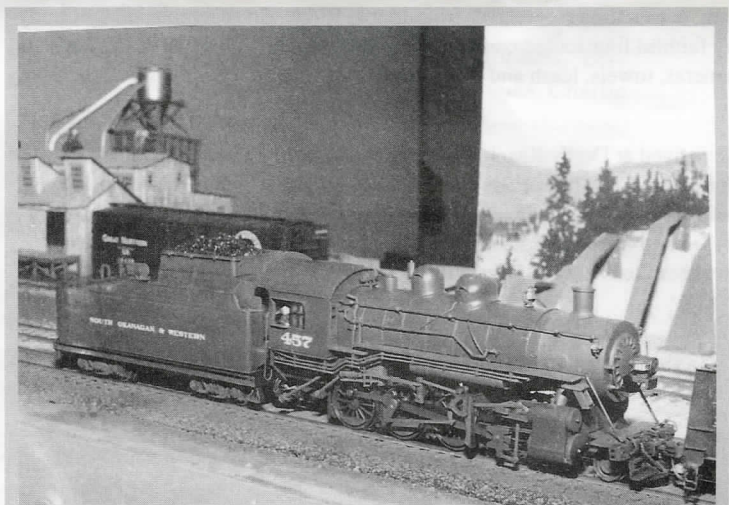
A John Schlosser Sampler



**CPR 5178 Mikado at Penticton prepared to take #47 to Vancouver.
PFM model painted by John Schlosser**



GN 568 SD at Cawston BC on the main heading south to Oroville, WA



**S0&W 457 switching at Mackie
Spectrum 2-8-0 modified tender with CPR N2a bunker, backup light,
chopped running boards and pilot stay rods.**



SP&S 51 Cawston Way Freight Southbound at Mackie

2816 Empress

-John Green

Yesterday, July 28 I had a calendar anomaly – an unbooked Saturday – Yes as luck would have it on that unbooked Saturday, the CPR Empress was scheduled to leave Port Coquitlam at 09:00 to run to Kamloops with a Breakfast for Learning charter. For those with internet access, point your web browser to <http://www.breakfastforlearning.ca/english/index.html> “CPR Steam Train Tour taking place July 29 – August 1, 2006 The Empress 2816 Steam Train will be visiting communities throughout BC and Alberta to help raise funds & awareness for student nutrition programs.”

Included in this web page was an auction for lucky individuals to participate in an auction to ride the cab of 2816 between specific locations.

So after consulting with some members of my Friday evening group about good photo sites on Friday evening I set off at 8:00 am for Derby Reach Park, across the Fraser River from Maple Ridge. So accompanied by Candy my faithful four footed companion, in our vehicle with some food, maps cameras, towels, leash and dog biscuits.

We arrived at Derby Reach park near Fort Langley and set up looking North across the Fraser River to a section of line which is located beside the river beneath some nice Maple Ridge residences. About 09:30 the train passed and I tired to do both video and snap a couple of photos, which as usual resulted in some jerky Video.



X2816 at North Bend

We packed up had a walk, and then took the free Ferry from Fort Langley to Albion, and proceeded along the Lougheed Highway to Mission and thence to Agassiz where the train had stopped for scheduled maintenance. As the train left Agassiz, I snapped a couple of shots as the train passed under the highway overpass just east of Agassiz, and then followed along the line to Katz, and thence to the Emory Creek Bridge. It had been years since I had railfanned this part of the canyon and while the Emory Creek bridge is visible from the highway, the trees have grown way up and so the only shot was from the middle of the Highway bridge from which I could only photograph half of the railway bridge span. Where I was joined on the narrow sidewalk by some friends of many years, Greg Madsen and Bill Galovich.

I subsequently discovered that Emory bar camp ground was built on the town site of the 1880's boom town of Emory which was an active community between 1870 and 1886. However when the construction of the first Canadian Transcontinental Railway was complete. After Railway construction was completed the community atrophied and eventually disappeared. More interesting details may be found on a display board located at the entrance to the camp ground.



X2816 at Aggasiz

I went on to the Alexander Highway bridge where I was again joined by Greg and with a noisy helicopter hovering overhead, we got some video of the CPR Empress and the passenger train passing under the bridge. Thence on to North Bend where the train stopped for more maintenance, and I had a chance to chat to some friends riding the train, Greg's wife Suzy and George Massey who is a member of my Friday evening group. George was riding by rail to visit family, for his summer vacation, and he had won the lottery to ride the cab between Kamloops and Notch Hill the next day. Suzy told Greg to meet her at Ashcroft, where he was to ride the in 2816's cab to Kamloops. After leaving North bend, I caught photos of the train a couple of locations and then my last video was taken was just north of Spence's Bridge where the Coldwater River emptied into the Thompson River. As the passenger extra 2816 East passed over the bridge there was a potash train passing westbound on the CNR side of the Thompson River. After Greg left for Ashcroft, Candy enjoyed a nice swim in the Coldwater river, had a good shake and then journeyed home.

It Was a nice relaxing day, unfortunately, neither the photos nor the video turned out to my expectations.

Parting Shot

